



AGENDA - Downtown Development Authority

DATE: December 12, 2023 7:00 PM City Council
Chambers

- I. Call to Order
- II. Roll Call
- III. DDA Informational Meeting
 - I. Public Comment
 - II. Overview of Annual Activities
 - III. Adjournment of Informational Meeting
- IV. Call to Order
- V. Roll Call
- VI. DDA Regular Meeting
- VII. Approval of Meeting Minutes
 - I. Approval of May 9th Minutes
- VIII. Public Comment (Agenda Items)
- IX. Unfinished Business
 - I. JIMA Studio Civic Campus Design Rendering
- X. New Business
 - I. Facade Improvement Program
 - II. 2024 Meeting Dates
- XI. Public Comment (Non-Agenda Items)
- XII. Adjournment

Public Comment: Public Comments are limited to three minutes.

Live Stream: The meeting will be livestreamed to the Official City of Grosse Pointe Park YouTube Channel.



DOWNTOWN DEVELOPMENT AUTHORITY MEETING

DATE: December 12, 2023

SUBJECT: Overview of Annual Activities

SUMMARY: Pursuant to PA 57 of 2018, the DDA is required to hold two informational meetings per year. This is the 2nd informational meeting of 2023, and this report summarizes DDA activities and accomplishments since the May 9th informational meeting.

City Hall Landscape Improvements- City Hall underwent some landscape improvements in front of city hall off of Jefferson including large yews that were removed blocking the front of city hall and the public sidewalk from the view off of Jefferson and redone with grass. As well as removal of plants around the flag pole of City Hall.

Sail of Two Cities Art Installation- The Sail of Two Cities Art Sculpture that was previously located at the round about of Wayburn and Kercheval was redone due to an accident into the sculpture earlier this year. This has happened to the sculpture twice at this location. Working with the Grosse Pointe Park Foundation and the artist to find a heavily trafficked spot to see the sculpture it was determined the sculpture should be placed in front of city hall. This accomplishes two goals, visibility and walkability allowing visitors to go right up to the sculpture and starting what the DDA heard from residents as part of the civic campus design, incorporating public art into our campus.

City Hall Parking Lot Resurfacing- A major capital improvement of the City Hall parking lot resurfacing was completed during the summer. The parking lot had not seen a major renovation since the early 1990's. Included are four new parking spaces next to the library, improved drainage, new curb in sections, complete asphalt resurfacing and improved signage and accessibility for handicap parking.

Civic Campus Review- As part of an overall review of the City Hall, Public Safety, Library and Future Parking Lot, the DDA wished to explore an opportunity through a Request for Proposal for services on a conceptual design of the area. The information to be included in the concept and building of the design with our new city master plan, parking study, input from business and residential stakeholders, beautification and the DDA Board. The Board met with JIMA Studios and members of the public to provide input and look at conceptual designs of what the civic campus could entail. The final renderings are public and will be presented as part of our regular meeting.

FINANCIAL IMPACT: Not Applicable

RECOMMENDATION: Review Informational Meeting Highlights

PREPARED BY: Nick Sizeland, City Manager



Downtown Development Authority MEETING - May 9, 2023
7:00 PM

CALL TO ORDER - INFORMATIONAL MEETING

The meeting was called to order by Chairperson Wixson and opened with the Pledge of Allegiance to the Flag. The meeting convened at the Council Chambers of the Municipal Building, 15115 E. Jefferson, Grosse Pointe Park, Wayne County, Michigan 48230.

ROLL CALL

The following were present: Boardmembers Assaf, Corbin, Horne, Kretschmar, Turnbull Vice Chair Farhat and Chairperson Wixson

Also present: Nick Sizeland, DDA Director and City Manager; and Kevin Kilby, City Attorney

Excused: Boardmembers Kilgus, Ochab, and Mayor Hodges

INFORMATIONAL MEETING OF THE DDA

INFORMATIONAL MEETING OF THE DDA:
PUBLIC COMMENT

The informational meeting of the DDA was open to the public for comment. No public comment.

INFORMATIONAL MEETING OF THE DDA:
OVERVIEW OF ANNUAL ACTIVITIES

DDA Director Sizeland spoke of the annual activities of the DDA:

Pursuant to PA 57 of 2018, the DDA is required to hold two informational meetings per year. This is the 1st informational meeting of 2023 , and this report summarizes DDA activities and accomplishments since the December 13, 2022 DDA Informational meeting.

SEMCOG Concept Design Rain Garden- Southeast Michigan Council of Governments (SEMCOG) has \$900,000 available through the EPA's Great Lakes Restoration Initiative for competitive subgrants to implement green infrastructure projects in Southeast Michigan. Grosse Pointe Park DDA applied in 2022 for funding of a design concept which at first we were not funded, money however was leftover from the program and Grosse Pointe Park was provided a Concept Design document funded by SEMCOG and eventually awarded for the project in the amount of roughly \$54,000. The DDA has \$10,000 in support funding as part of the Rain Garden Project.

JIMA Studio Civic Campus Discussion- As part of an overall review of the City Hall, Public Safety, Library and Future Parking Lot, the DDA wished to explore an opportunity through a Request for Proposal for services on a conceptual design of the area. The information to be included in the concept and building of the design with our new city master plan, parking study,input from business and residential stakeholders, beautification and the DDA Board. JIMA Studio assisted guiding the DDA and other city stakeholders through a visioning session that helps to define the following: (1) a clear goal statement for the civic campus design to serve as

a metric of success (2) stronger understanding of the intended site programs, character and vibe of this new space, (3) site non-negotiables or elements that we should consider to be fixed and (4) other considerations for the site that have not yet been explored. Jima will be presenting at the May 9th meeting some visual concepts of the Campus and look for feedback from the DDA and that of the Community.

DDA Proposed Budget Fiscal Year 23-24-The DDA Adopted its Fiscal Year proposed 2023-2024 budget which will include \$119,000 from captured property taxes. A new budget item for this Fiscal Year includes Business Grant opportunities while keeping open Green Infrastructure if funds for grants are not expended in the Fiscal Year. A continuation of Legal Services with a reduction from the DDA approving McGraw Morris to act as Legal Counsel, an increase in funds for landscape/maintenance of the Jefferson boulevards and islands, a continuation to the budget for the Civic Campus Parking Lot, an increase for wage and fringe of the DDA Director and continuing to budget for wayfinding/entrance signage to the District.

INFORMATIONAL MEETING OF THE DDA:
ADJOURNMENT OF INFORMATIONAL MEETING

The informational meeting was adjourned.

CALL TO ORDER - REGULAR MEETING

The regular meeting of the DDA was called to order.

APPROVAL OF MEETING MINUTES

APPROVAL OF MEETING MINUTES:
APPROVAL OF BUDGET HEARING MINUTES OF APRIL 18, 2023

Motion by Boardmember Wixson , seconded by Boardmember Turnbull, to approve the April 18, 2023 minutes.

AYES: Boardmembers Assaf, Corbin, Horne, Kretschmar, Turnbull Vice Chair Farhat and Chairperson Wixson

NAYS: None

PUBLIC COMMENT (AGENDA ITEMS)

None

UNFINISHED BUSINESS

None

NEW BUSINESS:
JIMA STUDIO CIVIC CAMPUS ENGAGEMENT DISCUSSION

Jima Studios provided an engagement opportunity for the DDA Board and members of the public to discuss the following Civic renderings and boards for ideas and discussion.

PUBLIC COMMENT (NON-AGENDA ITEMS)

NONE

ADJOURNMENT

Motion by Boardmember Turnbull, seconded by Boardmember Corbin, to adjourn the meeting.

AYES: Boardmembers Assaf, Corbin, Horne, Kretschmar, Turnbull Vice Chair Farhat and Chairperson Wixson

NAYS: None

With no further business, the meeting adjourned at 7:52 PM.

DRAFT PENDING APPROVAL



DOWNTOWN DEVELOPMENT AUTHORITY MEETING

DATE: December 12, 2023

SUBJECT: JIMA Studio Civic Campus Design Rendering

SUMMARY: The DDA submitted an RFP to review the Civic Campus of City Hall, Public Safety building and the library for the future potential of what our campus could become. After numerous meetings, discussions including an open house earlier this year Jima Studios completed our Civic Campus. Included in your packet is the site analysis, engagement summary including comments and suggestions from residents as well as the vision and design for the future.

The next steps in this process will be the DDA reviewing the vision, look for potential funding opportunities, grants and partnerships, setting realistic expectations over a multiyear plan and budgeting for upcoming fiscal years.

FINANCIAL IMPACT: Not Applicable

RECOMMENDATION: Review presentation

PREPARED BY: Nick Sizeland, City Manager



Grosse Pointe Park Civic Center Visioning

JIMA
STUDIO

JIMA Studio
www.jimastudio.com
Detroit Michigan

Contents

Executive Summary

Site Analysis

Engagement Summary

Civic Campus Vision + Design

Project Charge

Establish a vision for the Grosse Pointe Park Civic Campus as the City's 'front door'

The City of Grosse Pointe Park is interested in developing a clear vision for its Civic Campus, which hosts City Hall, the Public Safety Headquarters and the City Public Library. As a frequent location for residents, and a proximate destination for visitors, the Civic Campus has the opportunity to include stronger design character that is inviting, flexible, and dynamic.



Project Goals

Improve Pedestrian Access

- Ensure there are accessible sidewalks and/or clear pedestrian pathways connecting Lakepointe, Maryland, E. Jefferson Ave and the parking lot to building entrances.
- Remove, demote, or block sidewalks leading to inactive entrances.

Enhance Wayfinding

- Clearly indicate pedestrian and vehicular routes, using signage and site design.
- Ensure transit is also connected to the Civic Campus through wayfinding.

Improve Vehicular Access

- Improve signage for existing parking, indicating public/employee/public safety.
- Improve parking lot circulation.
- Add additional parking that is well integrated into the existing circulation patterns.
- Ensure non-public drives are clearly marked.

Maximize Public Space

- Consider additional compatible uses for parking lots
- Reconsider uses for underutilized open space
- Visually and programmatically connect the heart of the Civic Campus with E. Jefferson Ave.



Proposed Civic Campus Vision



Proposed Civic Campus Vision

- A** City Hall
- B** Public Safety
- C** Public Library
- D** Promenade Plaza
- E** Green Space
- F** Public Art
- G** Parking
- H** Green Island



Proposed Civic Campus Vision

Contents

Executive Summary

Site Analysis

Engagement Summary

Civic Campus Vision + Design

Site Analysis

To better understand the site, a robust site analysis was performed to review:

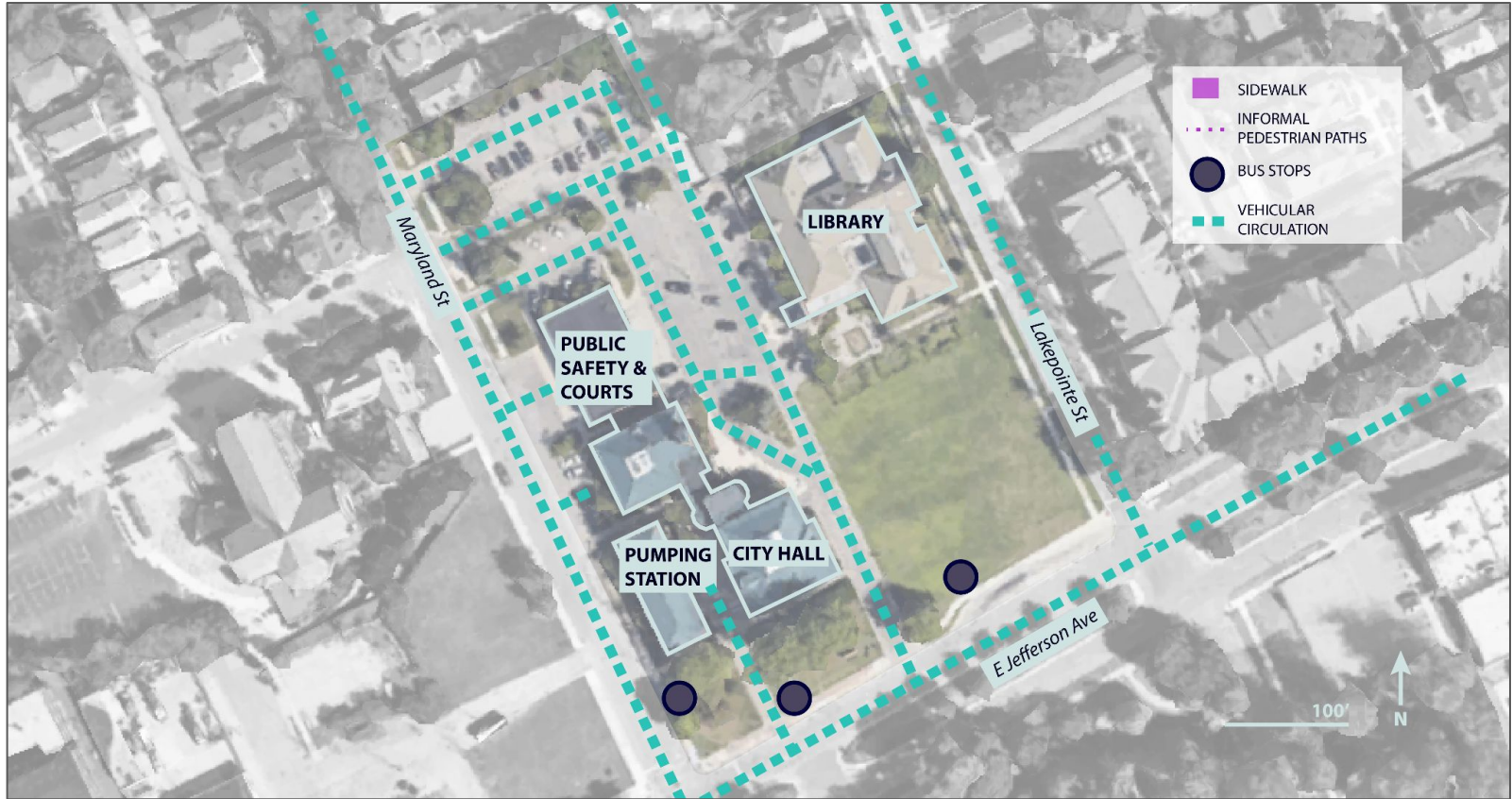
- Pedestrian circulation
- Parking and site movement
- Entrances and visibility
- Program and Use
- Points of Conflict



Site Analysis: Building Entry



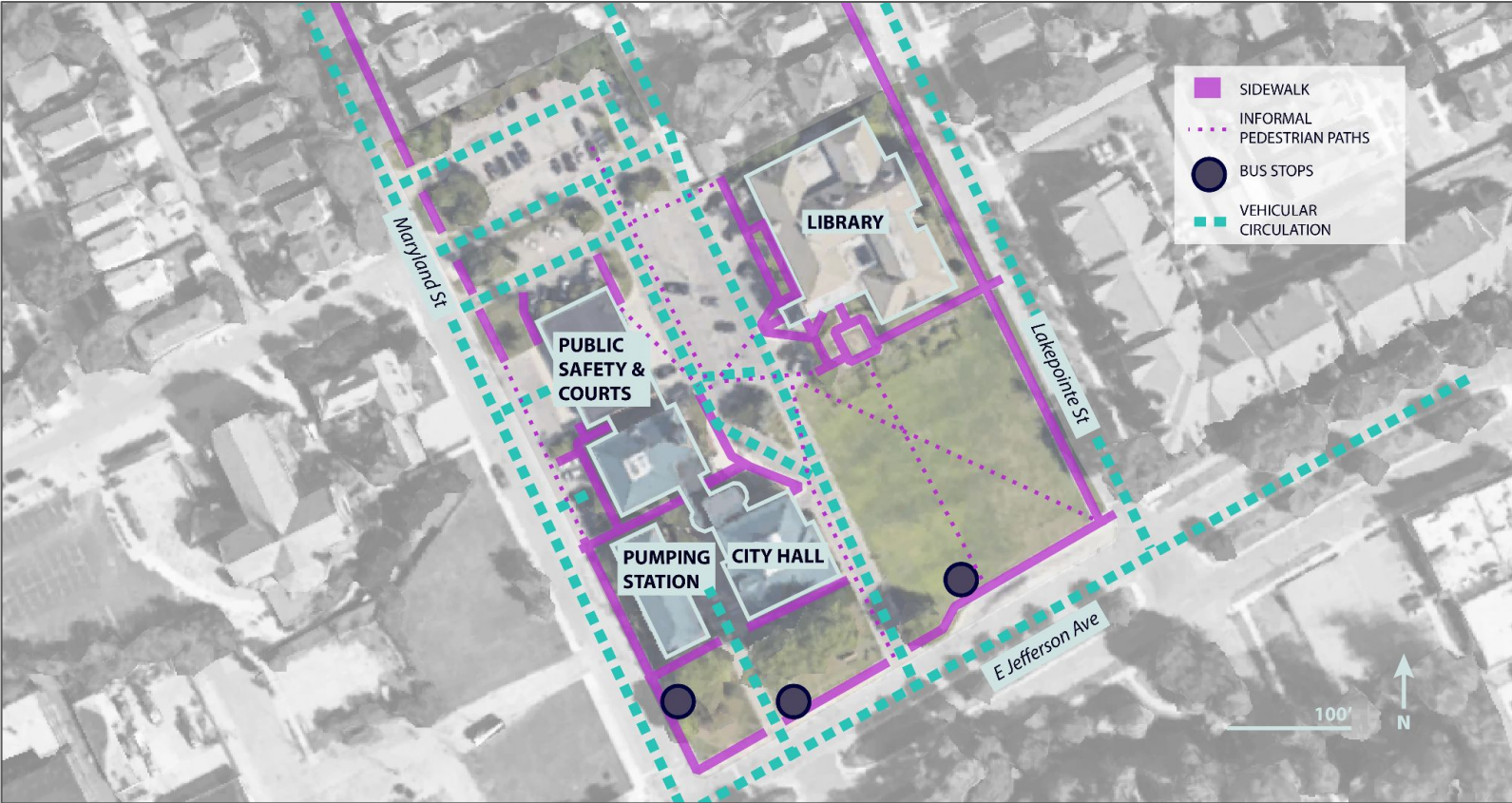
Site Analysis: Circulation



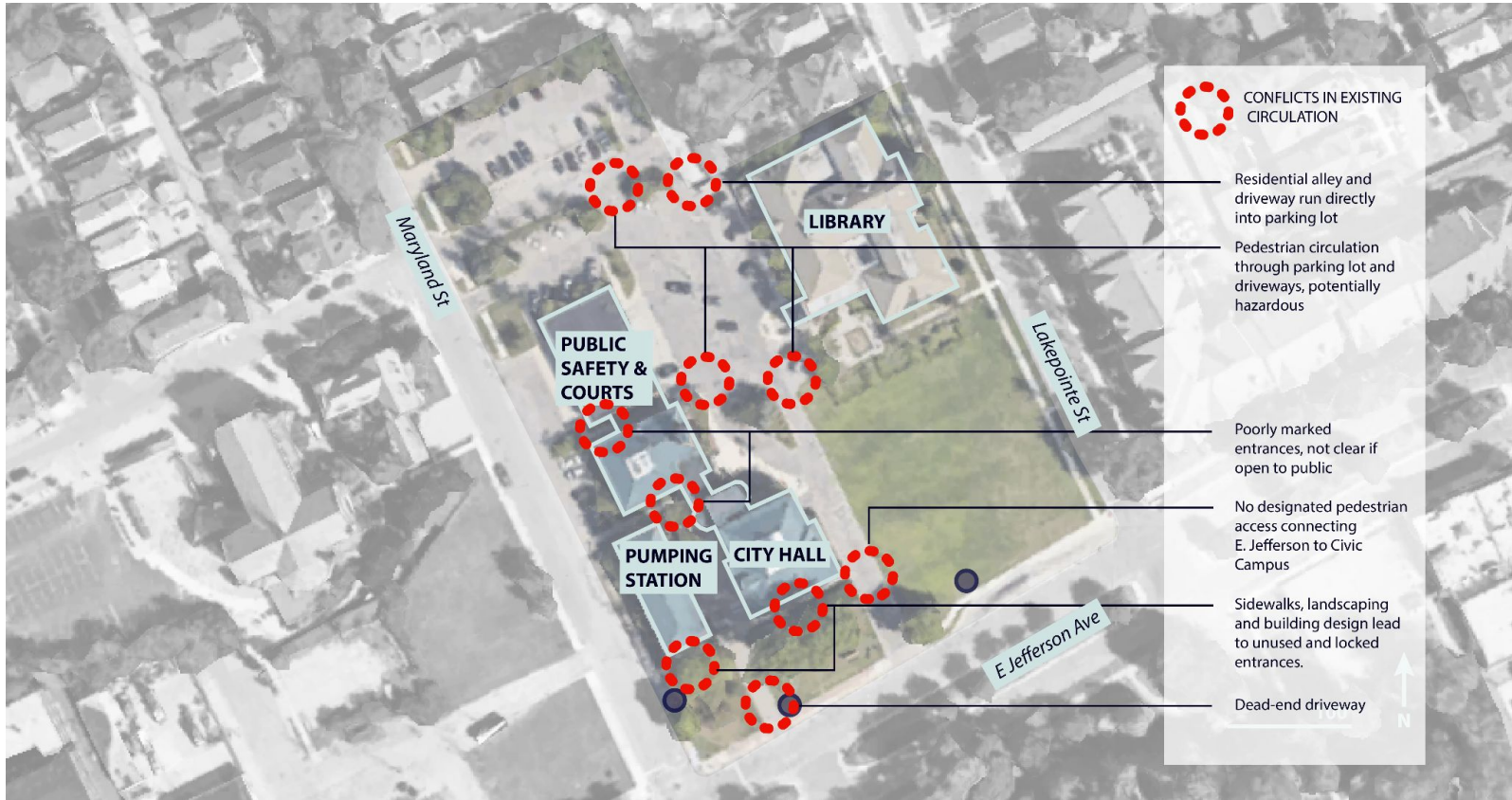
Site Analysis: Circulation



Site Analysis: Circulation



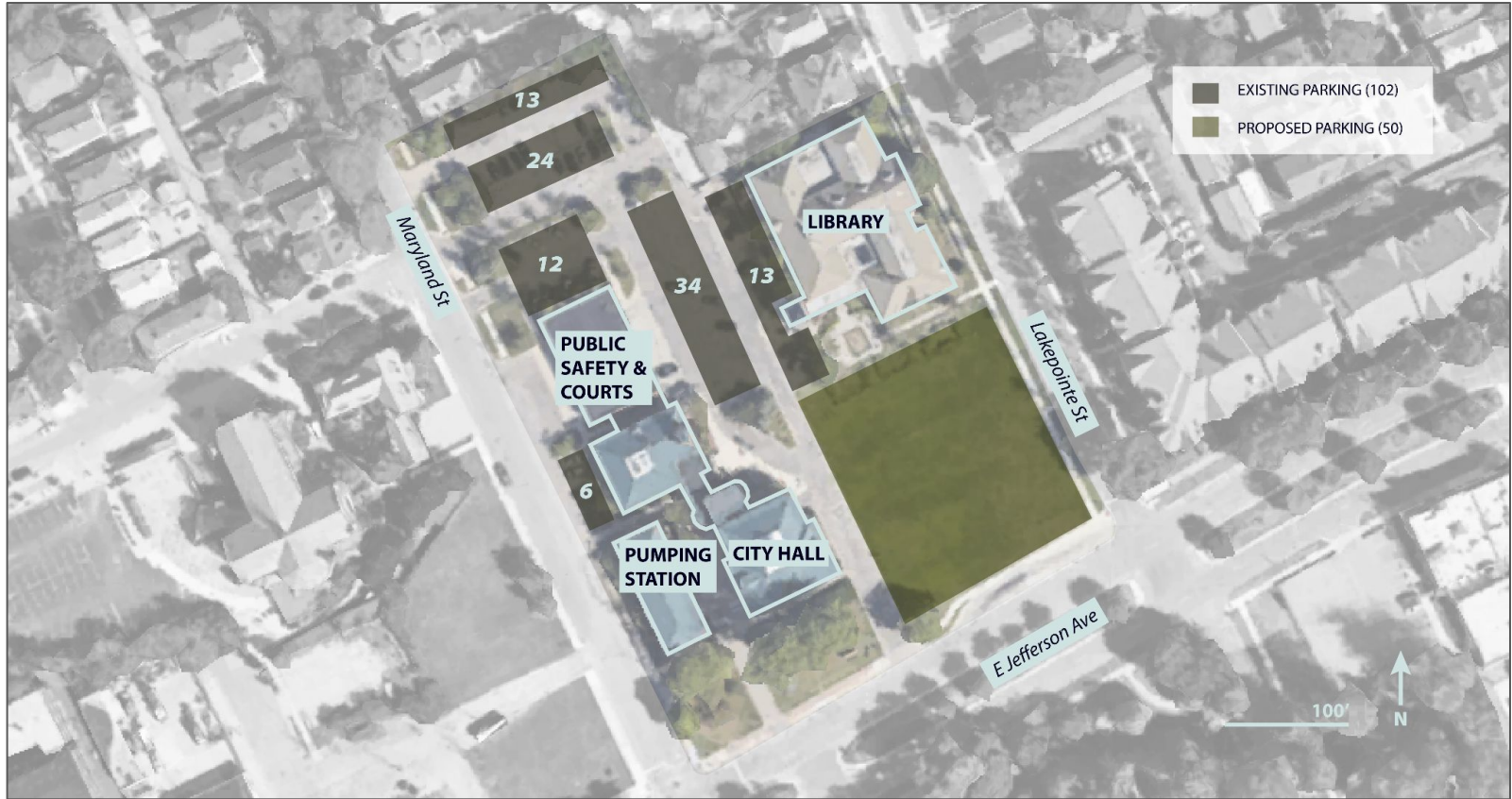
Site Analysis: Points of Conflict



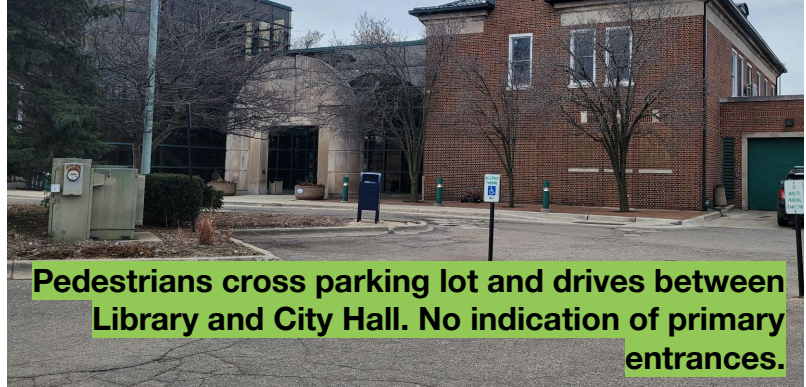
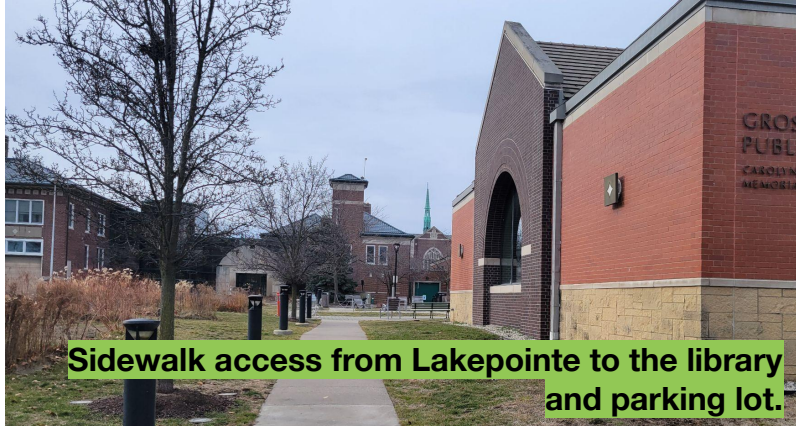
Site Analysis: Open Space



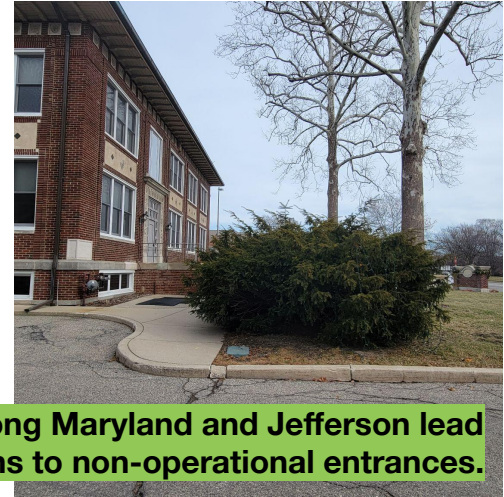
Site Analysis: Parking



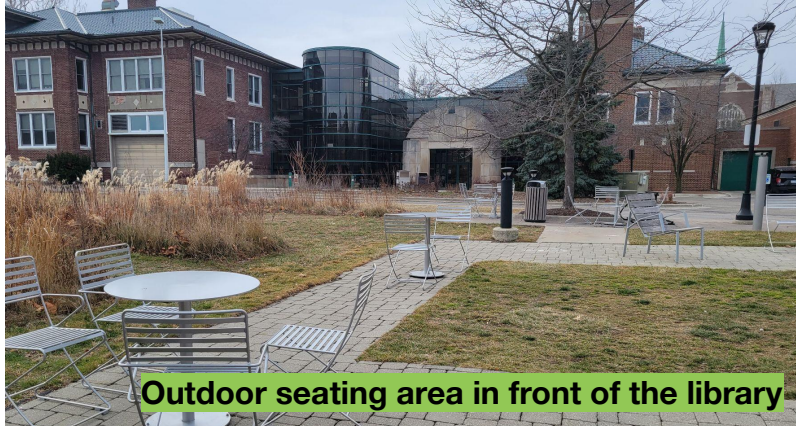
Site Analysis - Pedestrian Circulation



Site Analysis - Pedestrian Circulation



Site Analysis - Outdoor Spaces



Outdoor seating area in front of the library



Open lot between Jefferson and Library



Inactive lawns along Jefferson in front of City Hall



Inactive lawns along Jefferson in front of City Hall

Site Analysis - Parking



Findings From Previous Planning Processes

Grosse Pointe Park Master Plan April 2022

Key Points Specific to the Civic Campus

- Celebrate public buildings (Library, City Hall etc.)
- Enhance bus stops to improve transit experience, seating signage, etc.
- Improve wayfinding
- Add crosswalk markings at Maryland Street
- Improve green space and landscaping

City-Wide Goals To Consider In The New Site Design

- Enhance sidewalks and street crossing to ensure ADA compliance and pedestrian safety.
- Relax parking requirements in anticipation of increased use of shared transit options such as scooters, bike shares and ridesharing.
- Use of green infrastructure, such as bioswales, green roofs and street trees. Of particular concern is reducing stormwater inflow from sidewalks and parking lots.

GROSSE POINTE PARK MASTER PLAN UPDATE



Findings From Previous Planning Processes

Grosse Pointe Park Parking Study December 2021

Key Points Specific to the Civic Campus

- Parking at the Civic Center is well used: when all buildings are open, the parking lot is 90% occupied.
- Include EV parking spaces
- Improve bike rack visibility and access
- Improve parking signage and site wayfinding
- Add and/or replace parking meters in the existing lot
- Improve cross walks on Jefferson at Maryland and Lakepointe
- Create a new parking lot on the land between the library and Jefferson (50 spaces)

City-Wide Goals To Consider In The New Site Design

- Improve wayfinding
- Encourage use of alternatives modes of transit to reduce personal vehicle usage
- Increase pedestrian and bike friendliness
- Improve bus stop experience and signage
- Consider opportunities for shared parking agreements between destinations with opposing business hours.



GROSSE POINTE PARK PARKING STUDY CITY OF GROSSE POINTE PARK, MI

DECEMBER 2021

Findings From Previous Planning Processes

Jefferson Chalmers Neighborhood Framework April 2019

City-Wide Goals To Consider In The New Site Design

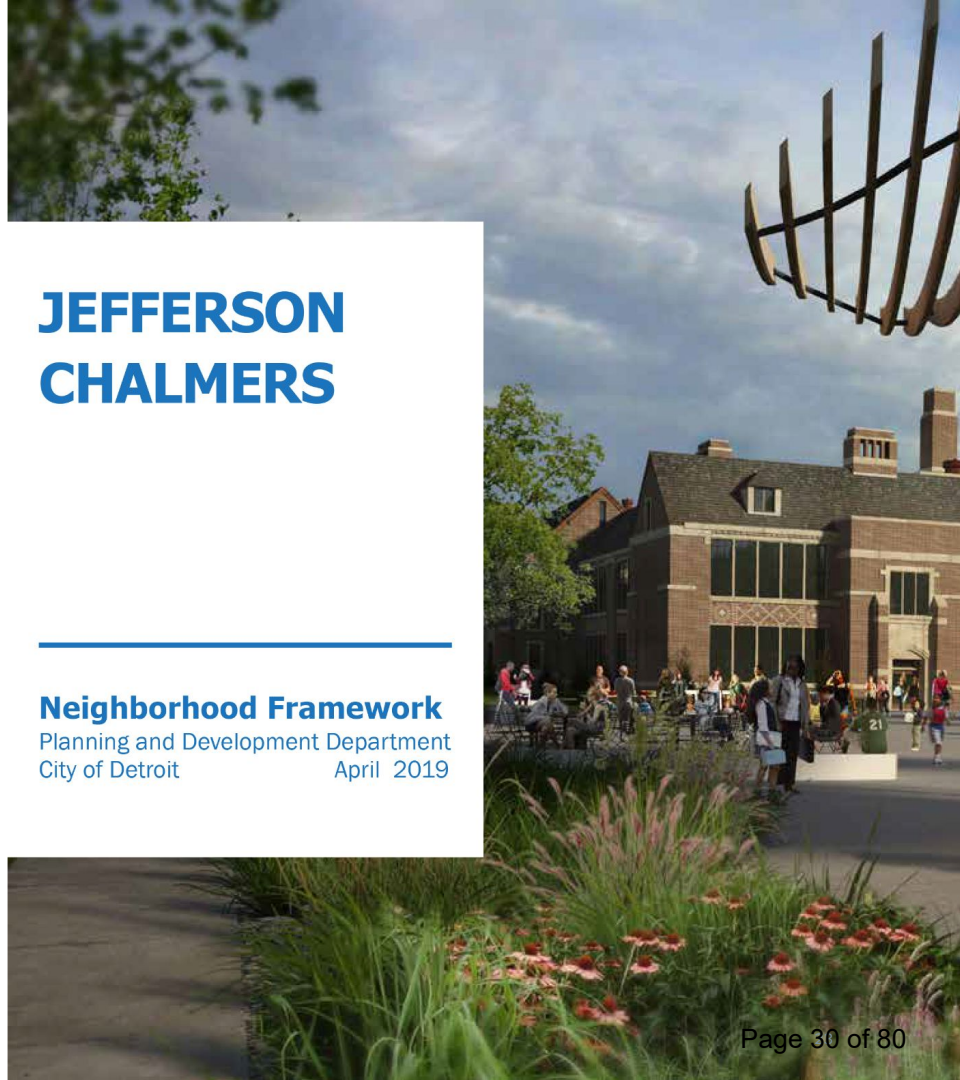
Stakeholders have indicated a desire to ensure that the new Civic Campus feels integrated into the Greater Jefferson Avenue Corridor. For this reason we are considering key design guidelines from the Jefferson Chalmers Neighborhood Framework, created by the City of Detroit's Planning and Development Department.

- Enhance Jefferson Avenue streetscape walkability, beauty and sustainability.
- Improve stormwater management through use of rain gardens and other green infrastructure.
- Improve retail and pedestrian experience of Jefferson Avenue.

JEFFERSON CHALMERS

Neighborhood Framework

Planning and Development Department
City of Detroit April 2019



Project Goals

Improve Pedestrian Access

- Ensure there are accessible sidewalks and/or clear pedestrian pathways connecting Lakepointe, Maryland, E. Jefferson Ave and the parking lot to building entrances.
- Remove, demote, or block sidewalks leading to inactive entrances.

Enhance Wayfinding

- Clearly indicate pedestrian and vehicular routes, using signage and site design.
- Ensure transit is also connected to the Civic Campus through wayfinding.

Improve Vehicular Access

- Improve signage for existing parking, indicating public/employee/public safety.
- Improve parking lot circulation.
- Add additional parking that is well integrated into the existing circulation patterns.
- Ensure non-public drives are clearly marked.

Maximize Public Space

- Consider additional compatible uses for parking lots
- Reconsider uses for underutilized open space
- Visually and programmatically connect the heart of the Civic Campus with E. Jefferson Ave.

Contents

Executive Summary

Site Analysis

Engagement Summary

Civic Campus Vision + Design

Engagement Summary

The following engagement events were held to understand the local aspiration of the Civic Campus revisioning:

Engagement Session #1 - Visioning Session with City Council and the DDA
February 28, 2023

Community Survey - Digital Perception Survey with 247 Respondents
April 18 - May 5, 2023

Engagement Session #2 - Concept Design Feedback Session with the City Council and the DDA
May 9, 2023



What We Heard!

What do we love about the Civic Center?

- Architecture
- Blend of old and new
- Access to open green space
- Ease of access to mailbox and library drop-off box
- Outdoor seating area near library
- Pedestrian access off of Lakepointe

What should be changed or improved?

- Green space in front of City Hall, on Jefferson, is not used
- Signage and wayfinding improvements
- Pedestrian safety and accessibility

“With the city's flooding issues, all new development should include natural landscaping that can hold a lot of water. I know this area was hit particularly hard in the flood a few years ago. ”

I would like to see the space used as a multi-use space that would be flexible enough to have small art fairs, food trucks and/or casual gathering place to read or enjoy the beautiful but natural landscaping!”

What words should describe the new Civic Campus?

BEAUTIFUL FRESH **INVITING**

NATURAL **DYNAMIC** CASUAL

HISTORIC FUNCTIONAL **COOL**

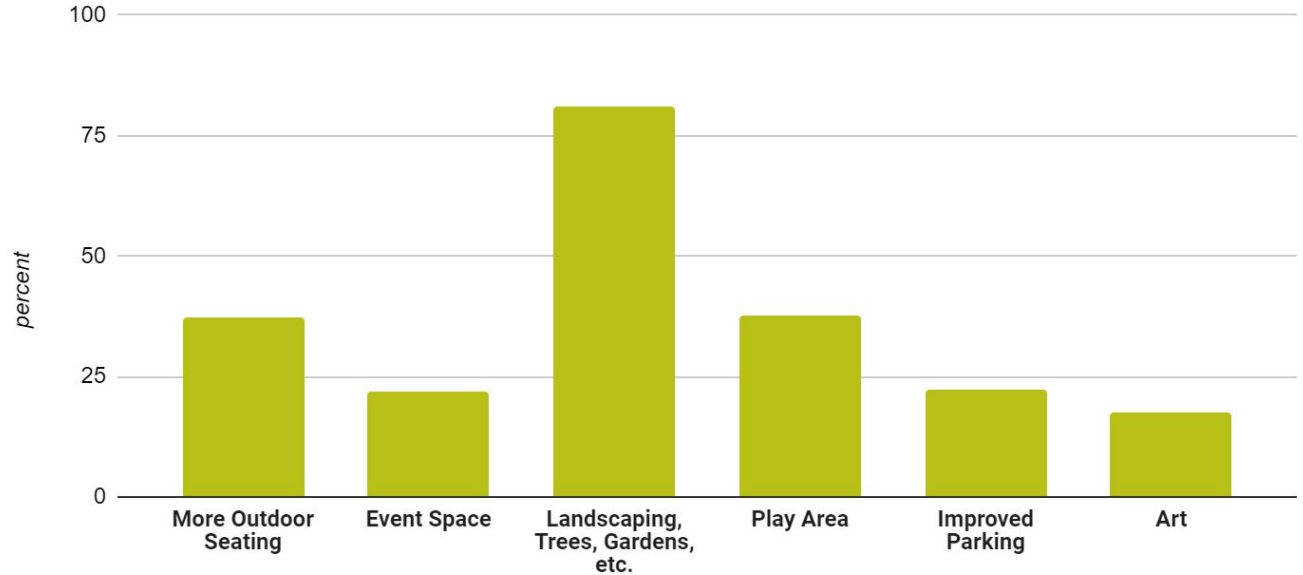
PEDESTRIAN FRIENDLY **FUN**

FAMILY FRIENDLY ACCESSIBLE

What would you be most excited to see included in the new Civic Campus?

“A cohesive, user-friendly layout that includes a lot of nature that can be enjoyed by people of all ages and abilities,”

“Make the existing green space more inviting and interesting. I like the idea that it can be flexible in its use,”



I'd like to see....

“Sidewalks to access all buildings, defined walkway between library and civic building. Replace old landscaping in front of civic building,”

“A resource that the library has offered is Wi-Fi outside of the library. It would be nice to have an outdoor seating area designed around this,”

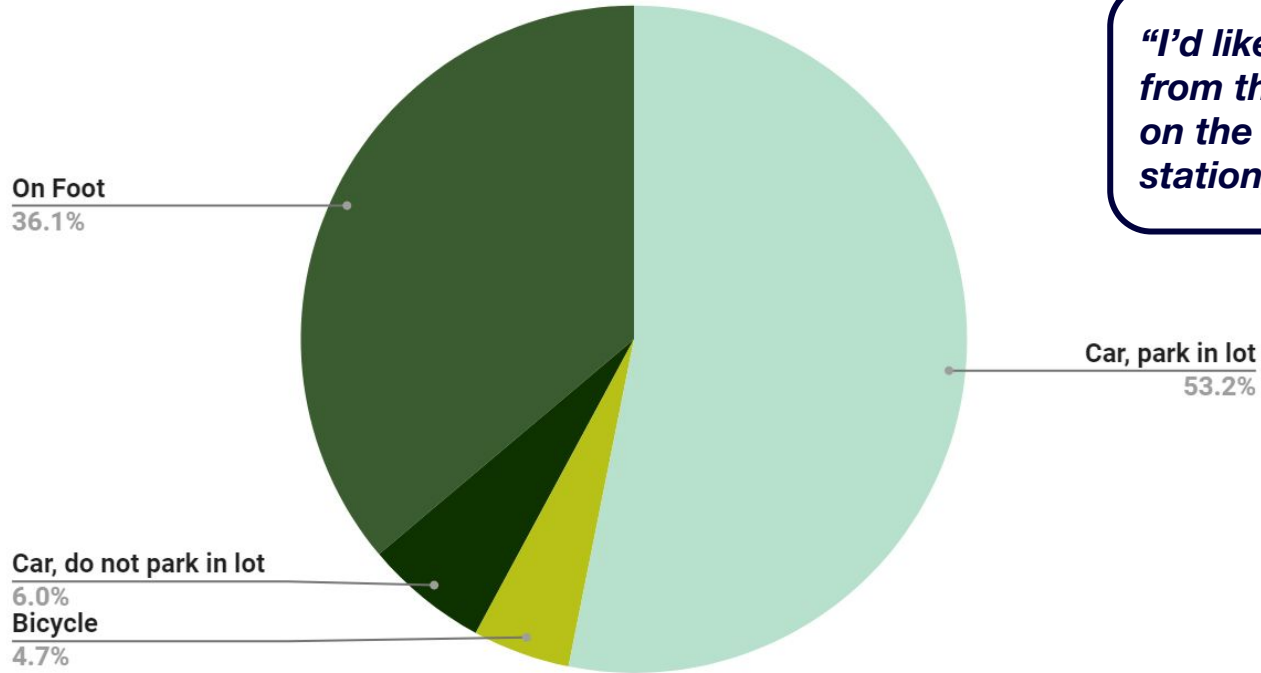
“A family friendly gathering space to hold outdoor functions that has beautiful gardens and a play structure,”

I don't usually use the parks because it's not close enough for me to walk and they're crowded. I walk to the library once a week in the summer, an outdoor space would be awesome,”

“Again - accessible, accessible, accessible - for all senses and abilities.”

“Clear and more attractive signage,”

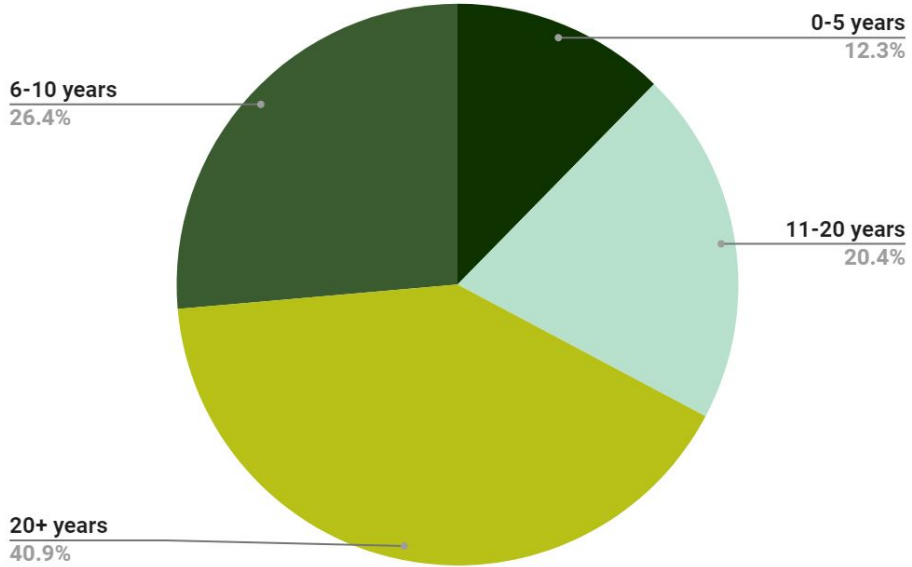
How do you usually travel to the Civic Center?



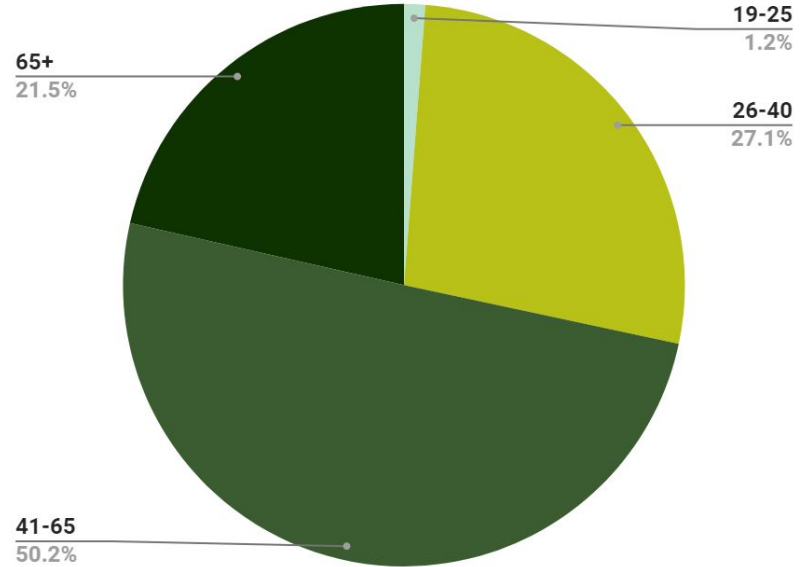
“I’d like a better walking path from the library to Maryland on the side of the police/fire station,”

Additional Survey Findings

How long have you lived in Grosse Pointe Park?



Survey Respondent Age



Additional Survey Findings

“Repave the existing lot with permeable surface, add trees and native plants,”



59% of survey respondents like bioswales



34% of survey respondents like green parking



Additional Survey Findings



66% of survey respondents like flexible outdoor gathering space



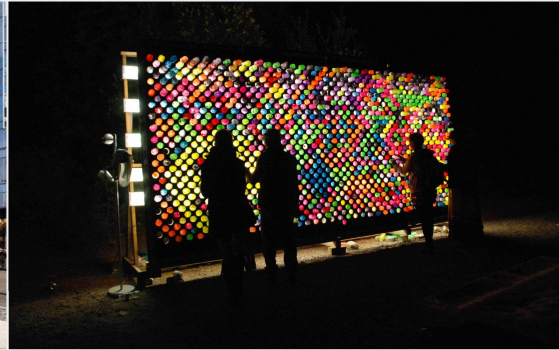
"It feels like a space waiting to be activated. If it were more visually interesting and had more outdoor seating, it would feel like a destination,"



43% of survey respondents like pop-up commercial space



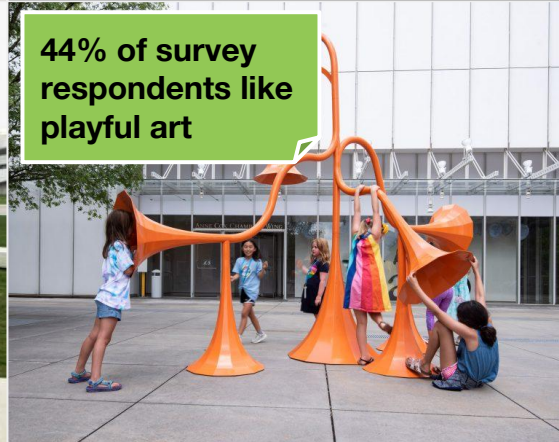
Additional Survey Findings



“I love seeing families gather at library events! An accessible, fun, green and playful space for all sounds wonderful!”



50% of survey respondents like functional art



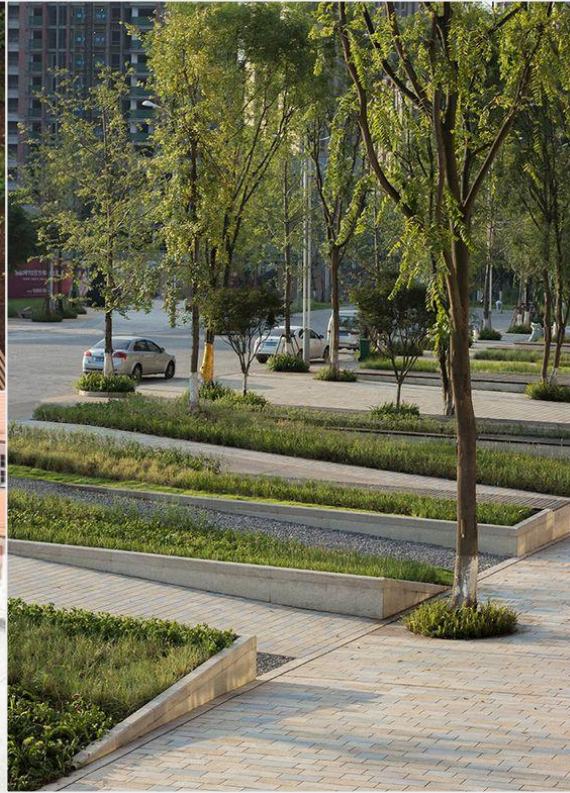
44% of survey respondents like playful art

Additional Survey Findings

"I'd like an inviting space to spend time after a library visit. Gardens that have year round interest. Natural playscape area for kids,"



Additional Survey Findings



“More seating, more trees. Less ‘parking lot’ feel and more ‘front yard of the community’ feel,”

Contents

Project Status

Site Analysis

Engagement Summary

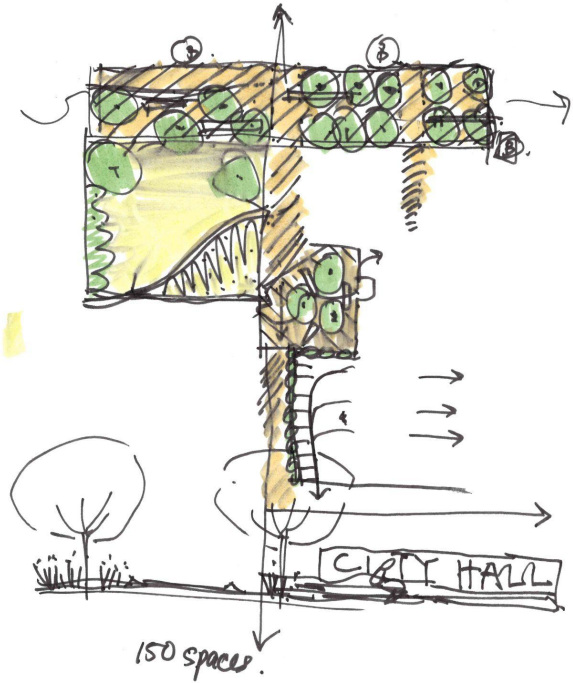
Civic Campus Vision + Design

Civic Campus Vision + Design

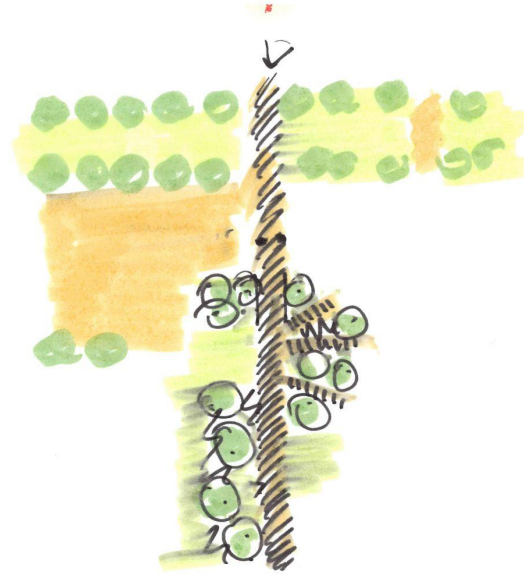
The engagement results helped to inform the final design for the Civic Campus Vision.



Opportunities and Challenges: Initial Sketches

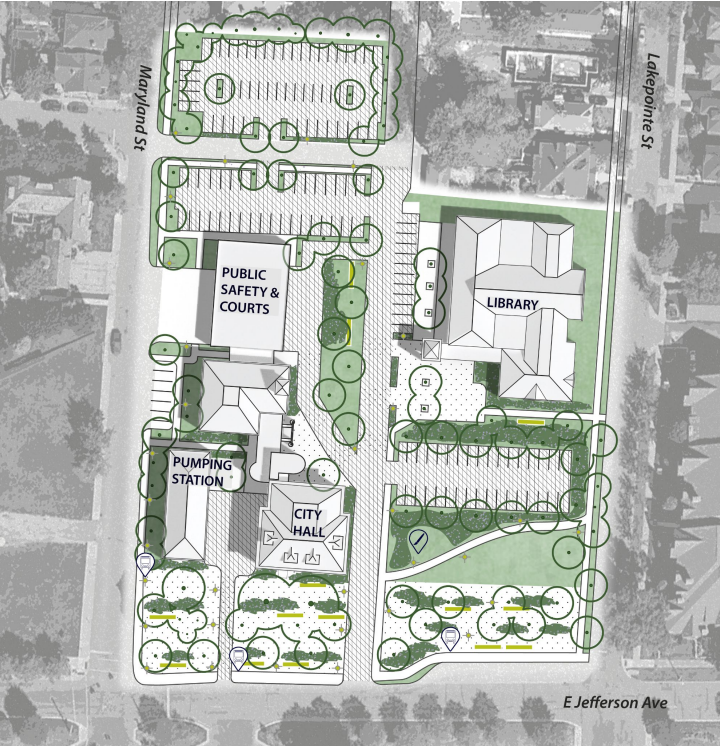


Concept 1



Concept 2.

Alternative Conceptual Ideas



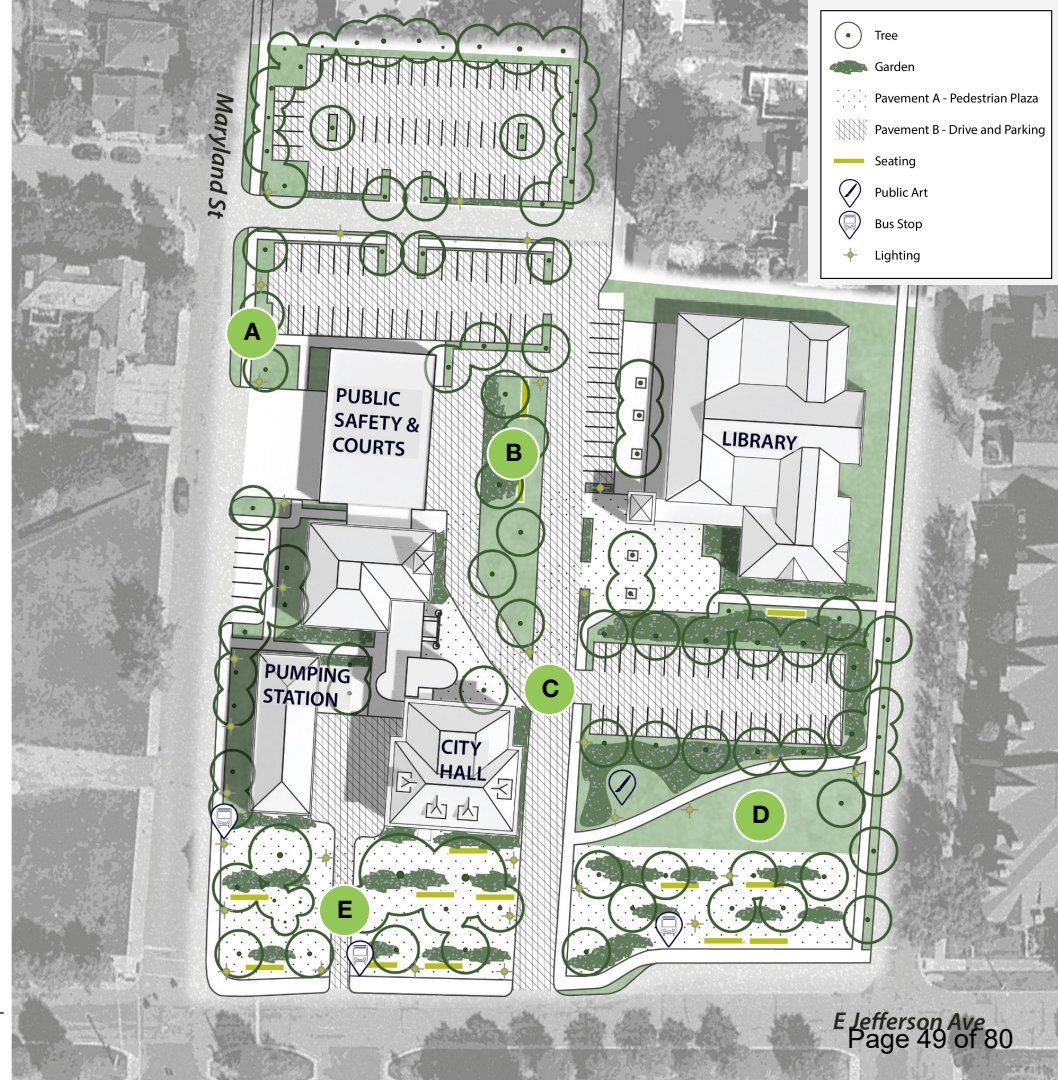
Concept A



Concept B

Concept A

- A** Sidewalk connecting Maryland street to the Library
- B** Central green plaza between City Hall and Library
- C** Two distinct paving types to visually indicate pedestrian zones and car zones
- D** Maintain public green space Lakepointe street and Jefferson avenue
- E** Civic Plaza flowing off of Jefferson made of hardscape including seating and lush landscaping



Concept B

- A** Pedestrian plaza connecting the Library to City Hall
- B** Two distinct paving types to visually indicate pedestrian zones and car zones
- C** Renew green space in front of City Hall, add seating and additional landscaping to invite usage
- D** Enlarged parking lot with movable planters for flexible use of parking lots



Feedback on Concepts

“Ensure emergency vehicles are able to exit towards Jefferson,”

“I really like Concept A. I’m excited to see we were able to keep some of the green space while adding parking,”

“I’d like to take the parking from Concept A but also include the movable planters,”

“The hardscape plaza on Jefferson in front of City Hall is nice. I’m concerned that if we keep it green, even with improvements, it will continue to be under-used,”

“The mailbox and library box work well where they are now and should stay,”

“It would be great to have a bus stop shelter on Jefferson with a green roof,”

“Include places for bioswales,”



Proposed Civic Campus Vision



Proposed Civic Campus Vision

- A** City Hall
- B** Public Safety
- C** Public Library
- D** Promenade Plaza
- E** Green Space
- F** Public Art
- G** Parking
- H** Green Island



Proposed Civic Campus Vision

Collective work and responsibility.

What is your favorite thing(s) about the Civic Campus now?	What would you be most excited to see included in a new Civic Campus?	How often do you go to the Civic Center?	How do you usually travel to the Civic Center?	What do you think could improve your experience moving around the Civic Center?	PARKING: The redesign of the Civic Center will need to include additional parking, but that doesn't have to mean an empty asphalt lot! Which of the following images do you find most appealing?	EVENTS: The Civic Center can support space for pop-ups and special events. Which of these images do you find most appealing?	ART: Public art could be integrated into the site design to serve as both decoration and functional use. Which of these images do you find most appealing?	What words describe how you'd like the new Civic Center to feel? (Select 3)	Is there anything else you'd like us to know about what you'd like to see included in the new Civic Center Campus?	Are you a current resident of Grosse Pointe Park?	How long have you lived in Grosse Pointe Park?	What is your age?	Would you be interested in engaging further on this project?	If you responded yes to the question above, please share your best email address.
Library and Mail drop boxes	Improved Parking	Multiple times each week	By Car, Parking in the Lot	N/A	Mixed Pavement and Vegetation	Temporary/Mobile Stage and Seating	Temporary/Rotating Installation	Casual, Accessible, Inviting	N/A	Yes	0-5 years	19-25	No	
Open Green Space, Library and Mail drop boxes	More Outdoor Seating, Event Space, Play Area	Monthly	By Car, Parking in the Lot	The lot size is fine currently, but desperately needs to be repaved.	Bioswales, Colorful Painted Asphalt	Built In Stage (Eastpointe City Hall)	Sculpture or Furniture made from reused Patterson Playscape materials, Functional Art, Playful	Family Friendly, Dynamic, Inviting, Functional	Na	Yes	6-10 years	26-40	No	
Open Green Space, Library and Mail drop boxes, Outdoor Seating Area Near the Library, Bike Repair Station	Landscaping, Trees, Gardens, etc.	Weekly	On Foot	Newly paved lot, current one has plenty of parking but lots of pot holes	Bioswales, Colorful Painted Asphalt, Permeable Pavers	Flexible Outdoor Gathering Space	None	Natural, Inviting, Beautiful	No more parking lots!	Yes	20+ years	26-40	No	
Library and Mail drop boxes, Outdoor Seating Area Near the Library	Improved Parking, This is the worst play area for children. High risk	Weekly	By Car, Parking in the Lot	Improved parking lot. A smooth surface and more parking with a few more seasonal planter pots and flowers.	Neutral Painted Asphalt. The options are nice, but we need more parking spaces.	None of these. Save these options for Kercheval and biz districts.	Functional Art	Historic, Inviting, Functional	A clean and functional eye appealing space on Jefferson. The community is not taking care of the public areas very well these days. Dealing with that in mind.	Yes	20+ years	41-65	No	
Open Green Space	Landscaping, Trees, Gardens, etc., Play Area	Weekly	By Car, Parking in the Lot	pedestrian safe pathways, landscaped green spaces with seating	Mixed Pavement and Vegetation, Permeable Pavers	Flexible Outdoor Gathering Space, Pop-up Commercial Space (Small Business, Farmer's Market, etc.)	Temporary/Rotating Installation, Sculpture or Furniture made from reused Patterson Playscape materials	Family Friendly, Natural, Accessible	it should hopefully not feel like more concrete. we need to enhance our green spaces in this area, especially with the art center and its associated parking lot(s) going in nearby.	Yes	11-20 years	41-65	No	
Open Green Space, Library and Mail drop boxes, Outdoor Seating Area Near the Library, Bike Repair Station	More Outdoor Seating, Landscaping, Trees, Gardens, etc., Play Area	Monthly	On Foot	More walkways. Not necessarily paved.	Mixed Pavement and Vegetation, Bioswales	Flexible Outdoor Gathering Space	Functional Art, Playful	Family Friendly, Natural, Inviting, Beautiful	It should remain park-like.	Yes	6-10 years	41-65	Yes	Timlowe1@gmail.com
Outdoor Seating Area Near the Library	More Outdoor Seating, Landscaping, Trees, Gardens, etc.	Rarely	By Car, Parking in the Lot	N/A	Mixed Pavement and Vegetation	Flexible Outdoor Gathering Space	Place Specific Art	Family Friendly, Casual, Accessible	N/A	Yes	20+ years	65+	No	
Library and Mail drop boxes	Landscaping, Trees, Gardens, etc., Improved Parking	Weekly	By Car, Parking in the Lot	Landscaping and additional parking.	Bioswales, Permeable Pavers	Flexible Outdoor Gathering Space, Pop-up Commercial Space (Small Business, Farmer's Market, etc.)	Temporary/Rotating Installation, Playful	Natural, Accessible, Beautiful, Functional	NA	Yes	20+ years	41-65	Yes	Mbl@comcast.net
Outdoor Seating Area Near the Library	More Outdoor Seating, Event Space, Landscaping, Trees, Gardens, etc., Play Area, Art	Multiple times each week	On Foot	It needs to be more pedestrian friendly especially where the sidewalk disappears where the police officers park. Activate the green space not with more parking but with event space, transit facilities and art.	Mixed Pavement and Vegetation, Bioswales, Permeable Pavers	Flexible Outdoor Gathering Space, Food Truck Pop-up Space, Pop-up Commercial Space (Small Business, Farmer's Market, etc.)	Temporary/Rotating Installation, Sculpture or Furniture made from reused Patterson Playscape materials, Functional Art, Playful	Natural, Accessible, Fresh, Historic, Inviting, Beautiful, Functional	Please limit the amount of it being a parking lot. There just isn't anything that draws you to a place that is simply parking.	Yes	6-10 years	26-40	Yes	Ctdetroit@gmail.com
Library and Mail drop boxes	Event Space, Art	Monthly	By Car, Parking in the Lot	Better Access points that are clearly displayed with greater traffic flow	Mixed Pavement and Vegetation	Flexible Outdoor Gathering Space	Functional Art	Accessible	Please do not make it more than it needs to be. It should be accessible and efficient.	Yes	11-20 years	41-65	Maybe	
Open Green Space, Library and Mail drop boxes, Bike Repair Station	More Outdoor Seating, Event Space, Landscaping, Trees, Gardens, etc., Play Area	Weekly	On Foot	Better management of asphalt in parking lot	Permeable Pavers	Food Truck Pop-up Space, Pop-up Commercial Space (Small Business, Farmer's Market, etc.)	Displays that can showcase local art, that change month to month etc. and nice lighting would be really cool	Natural, Accessible, Beautiful	Please don't pave it all. The parking lot idea really sucks.	Yes	6-10 years	26-40	Yes	meg.obrien89@gmail.com
Open Green Space, Library and Mail drop boxes, Outdoor Seating Area Near the Library, Bike Repair Station	More Outdoor Seating, Landscaping, Trees, Gardens, etc., Play Area	Once in a while. More often in the summer than winter	On foot is my preference, but by car if I'm on my way other places	More seating, more trees. Less 'parking lot' feel and more 'front yard of the community' feel	Bioswales, Permeable Pavers	Flexible Outdoor Gathering Space, Pop-up Commercial Space (Small Business, Farmer's Market, etc.)	Functional Art, Playful	Natural, Accessible, Inviting	Less pavement, and not a parking lot for an illegal and ugly tax shelter	Yes	6-10 years	41-65	Yes	Ehgurule@gmail.com
Open Green Space	Landscaping, Trees, Gardens, etc.	Weekly	By Car, Parking in the Lot	Pave the lot	Mixed Pavement and Vegetation	Flexible Outdoor Gathering Space	Temporary/Rotating Installation	Casual, Inviting, Beautiful	No	Yes	20+ years	65+	Yes	Akbkb@comcast.net
Bike Repair Station	More Outdoor Seating, Landscaping, Trees, Gardens, etc.	Monthly	By Bike	I'd love to see a native garden.	Bioswales	Pop-up Commercial Space (Small Business, Farmer's Market, etc.)	Playful	Family Friendly, Natural, Inviting	Native garden	Yes	11-20 years	41-65	No	
Open Green Space, Library and Mail drop boxes, Outdoor Seating Area Near the Library	More Outdoor Seating, Event Space, Landscaping, Trees, Gardens, etc., Play Area, Art	Multiple times each week	On Foot	Make the existing green space more inviting and interesting. I like the idea that it can be flexible in its use, but it's not very defined right now.	Bioswales, Permeable Pavers, I've never seen a parking problem at city hall or the library. What City would make a parking lot the centerpiece of their civic campus?	Flexible Outdoor Gathering Space, Temporary/Mobile Stage and Seating, Pop-up Commercial Space (Small Business, Farmer's Market, etc.)	Functional Art, Playful	Natural, Inviting, Functional	Not a parking lot. There's no proven need for it and why in the world would we want a parking lot as the symbol of our city?	Yes	6-10 years	41-65	No	
Open Green Space	Landscaping, Trees, Gardens, etc., Play Area	Never have gone	Have not been before	N/A	Bioswales	Pop-up Commercial Space (Small Business, Farmer's Market, etc.)	Patterson Playscape materials, Playful	Family Friendly, Accessible, Functional	No	Yes	0-5 years	26-40	Yes	Beth.lowry17@gmail.com
Open Green Space, Library and Mail drop boxes, Outdoor Seating Area Near the Library, Bike Repair Station	More Outdoor Seating, Landscaping, Trees, Gardens, etc., Play Area. I love the green space. I think adding a play area and seating would be a lovely ideal and make a trip to the library a full experience	Monthly	By Car, Parking in the Lot	I'm not sure	Bioswales, Colorful Painted Asphalt	Flexible Outdoor Gathering Space, Food Truck Pop-up Space	Functional Art, Playful	Family Friendly, Accessible, Fresh	I love the thought of it feeling fresh and inviting to everyone! Bright colors, soft music, a stage seems like a great idea but I don't want to lose the green space. Food trucks or a coffee cart on special events would be nice	Yes	6-10 years	26-40	Yes	SamNC@kw.com

What is your favorite thing(s) about the Civic Campus now?	What would you be most excited to see included in a new Civic Campus?	How often do you go to the Civic Center?	How do you usually travel to the Civic Center?	What do you think could improve your experience moving around the Civic Center?	PARKING: The redesign of the Civic Center will need to include additional parking, but that doesn't have to mean an empty asphalt lot! Which of the following images do you find most appealing?	EVENTS: The Civic Center can support space for pop-ups and special events. Which of these images do you find most appealing?	ART: Public art could be integrated into the site design to serve as both decoration and functional use. Which of these images do you find most appealing?	What words describe how you'd like the new Civic Center to feel? (Select 3)	Is there anything else you'd like us to know about what you'd like to see included in the new Civic Center Campus?	Are you a current resident of Grosse Pointe Park?	How long have you lived in Grosse Pointe Park?	What is your age?	Would you be interested in engaging further on this project?	If you responded yes to the question above, please share your best email address.
Outdoor Seating Area Near the Library	More Outdoor Seating, Landscaping, Trees, Gardens, etc., Play Area, Art	Monthly	By Car, Parking in the Lot	Clearer signage inside. The truth is I only go when I'm paying property taxes or water bills.	Bioswales	Flexible Outdoor Gathering Space	Temporary/Rotating Installation	Accessible, Historic, Inviting	No comment	Yes	20+ years	65+	No	
Library and Mail drop boxes	Landscaping, Trees, Gardens, etc.	Rarely	By Car, But I Don't Park in the Lot		Bioswales	Food Truck Pop-up Space	Playful	Family Friendly, Inviting	Not really	Yes	20+ years	41-65	No	
Library and Mail drop boxes, Outdoor Seating Area Near the Library	Event Space, Play Area, Improved Parking	Monthly	By Car, Parking in the Lot	Keeping/improving flow in and through the parking lot	Mixed Pavement and Vegetation, Colorful Painted Asphalt, Permeable Pavers	Flexible Outdoor Gathering Space, Built In Stage (Eastpointe City Hall), Pop-up Commercial Space (Small Business, Farmer's Market, etc.)	Temporary/Rotating Installation, Functional Art, Playful	Family Friendly, Inviting, Functional	That's all	Yes	11-20 years	41-65	Yes	Jenn.niederost@gmail.com
Outdoor Seating Area Near the Library, Bike Repair Station	Event Space, Landscaping, Trees, Gardens, etc., Improved Parking, Art	Monthly	By Car, Parking in the Lot	Better parking	Mixed Pavement and Vegetation, Permeable Pavers	Flexible Outdoor Gathering Space	Sculpture or Furniture made from reused Patterson Playscape materials, Playful	Family Friendly, Natural, Inviting, Functional, Traditional	Lighting and charging stations	Yes	20+ years	41-65	No	
Open Green Space, Outdoor Seating Area Near the Library	Event Space, Landscaping, Trees, Gardens, etc., Play Area	Multiple times each week	On Foot	Keep the green spaces and please plant a few trees on the perimeter. It's our favorite kite flying spot.	Mixed Pavement and Vegetation, Permeable Pavers	Flexible Outdoor Gathering Space, Pop-up Commercial Space (Small Business, Farmer's Market, etc.)	Sculpture or Furniture made from reused Patterson Playscape materials, Playful	Family Friendly, Natural, Beautiful	Please consider the flooding in the area and keep the grass and water retention	Yes	11-20 years	41-65	Yes	irelandk@hotmail.com
Library and Mail drop boxes	Event Space	Monthly	On Foot	Repave the parking lot	Mixed Pavement and Vegetation	Pop-up Commercial Space (Small Business, Farmer's Market, etc.)	Functional Art	Historic, Beautiful, Functional	N/a	Yes	6-10 years	26-40	No	
Library and Mail drop boxes	More Outdoor Seating, Event Space, Landscaping, Trees, Gardens, etc.	Monthly	By Car, Parking in the Lot	Rental space	Mixed Pavement and Vegetation	Flexible Outdoor Gathering Space, Food Truck Pop-up Space, Pop-up Commercial Space (Small Business, Farmer's Market, etc.)	Functional Art	Family Friendly, Fresh, Inviting, Beautiful	No	Yes	20+ years	41-65	No	
Open Green Space	Landscaping, Trees, Gardens, etc.	Weekly	By Car, Parking in the Lot	Better parking	Bioswales	Flexible Outdoor Gathering Space, Pop-up Commercial Space (Small Business, Farmer's Market, etc.)	Sculpture or Furniture made from reused Patterson Playscape materials, Functional Art	Natural, Historic, Inviting, Beautiful	Love the idea of the farmers market!	Yes	11-20 years	41-65	Yes	Jtabaczuk@gmail.com
Outdoor Seating Area Near the Library	More Outdoor Seating, Event Space, Landscaping, Trees, Gardens, etc., Play Area	Rarely	On Foot	A more welcoming walkway leading up to it from Jefferson	Bioswales, Permeable Pavers	Pop-up Commercial Space (Small Business, Farmer's Market, etc.)	Temporary/Rotating Installation, Playful	Family Friendly, Inviting, Beautiful	An inviting space when entering from Jefferson	Yes	6-10 years	26-40	Yes	Taryn.schaldach@gmail.com
Outdoor Seating Area Near the Library	More Outdoor Seating, Event Space, Landscaping, Trees, Gardens, etc., Art	Weekly	On Foot	More area to enjoy sitting outside the library	Bioswales, Colorful Painted Asphalt	Flexible Outdoor Gathering Space, Built In Stage (Eastpointe City Hall), Food Truck Pop-up Space, Pop-up Commercial Space (Small Business, Farmer's Market, etc.)	Sculpture or Furniture made from reused Patterson Playscape materials, Functional Art	Natural, Inviting, Beautiful, Functional	A community garden area	Yes	11-20 years	26-40	Yes	katrinawojtan@gmail.com
Open Green Space	A public park in front of the library. A mixed use apartment building near the church.	Multiple times each week	On Foot	No art center	No more parking is needed.	Pop-up Commercial Space (Small Business, Farmer's Market, etc.)	Functional Art	Natural, Casual, Inviting	Make it walkable and get rid of the plans for more parking.	Yes	11-20 years	41-65	No	
Library and Mail drop boxes	Landscaping, Trees, Gardens, etc., Improved Parking	Monthly	By Car, Parking in the Lot	Better parking	Mixed Pavement and Vegetation	Flexible Outdoor Gathering Space, Pop-up Commercial Space (Small Business, Farmer's Market, etc.)	Temporary/Rotating Installation, Functional Art	Natural, Accessible, Beautiful	No	Yes	11-20 years	41-65	No	
Open Green Space, Library and Mail drop boxes, Outdoor Seating Area Near the Library	Landscaping, Trees, Gardens, etc., Play Area	Monthly	By Car, But I Don't Park in the Lot	Making it easier to turn around when using the drop boxes.	Mixed Pavement and Vegetation, Bioswales, Permeable Pavers	Flexible Outdoor Gathering Space, Pop-up Commercial Space (Small Business, Farmer's Market, etc.)	Temporary/Rotating Installation, Functional Art, Playful	Family Friendly, Natural, Accessible, Inviting, Beautiful	It should be accessible for families, young people and elderly people. It should be a place people feel comfortable to gather.	Yes	0-5 years	26-40	Yes	ebertin350@gmail.com
Open Green Space	More Outdoor Seating, Landscaping, Trees, Gardens, etc., Play Area	Monthly	By Car, Parking in the Lot	Not surr	Bioswales	Flexible Outdoor Gathering Space	Temporary/Rotating Installation	Family Friendly, Accessible, Fresh	No	Yes	6-10 years	41-65	No	
Open Green Space, Library and Mail drop boxes, Outdoor Seating Area Near the Library, Bike Repair Station	More Outdoor Seating, Landscaping, Trees, Gardens, etc., Play Area, I would love a more accessible entrance to the library on the Maryland side! Its challenging to find the right driveway to walk in	Multiple times each week	On Foot	Having more walkable areas around the center	Bioswales, Permeable Pavers	Flexible Outdoor Gathering Space, Built In Stage (Eastpointe City Hall), Temporary/Mobile Stage and Seating, Food Truck Pop-up Space, Pop-up Commercial Space (Small Business, Farmer's Market, etc.)	Temporary/Rotating Installation, Sculpture or Furniture made from reused Patterson Playscape materials, Functional Art, Playful	Family Friendly, Accessible, Inviting, Functional	I love seeing families gather at library events! An accessible, fun, green and playful space for all sounds wonderful!	Yes	11-20 years	41-65	Yes	Kellyrossibox@gmail.com
Open Green Space, Outdoor Seating Area Near the Library	More Outdoor Seating, Landscaping, Trees, Gardens, etc.	Weekly	On Foot	Making it more pedestrian friendly	Bioswales	Flexible Outdoor Gathering Space, Pop-up Commercial Space (Small Business, Farmer's Market, etc.)	Functional Art, Playful	Natural, Accessible, Fresh	Human scale, not car scale	Yes	11-20 years	65+	Yes	clemfortuna@gmail.com
Open Green Space	Landscaping, Trees, Gardens, etc.	Multiple times each week	By Car, Parking in the Lot	Repaving the parking lot, it's pretty bad.	Bioswales	Pop-up Commercial Space (Small Business, Farmer's Market, etc.)	Playful	Family Friendly, Natural, Inviting, Beautiful	No	Yes	20+ years	26-40	Yes	Carlycopus@gmail.com
Outdoor Seating Area Near the Library	More defined walkways and no parking meters	Monthly	By Car, Parking in the Lot	Better walkways	Permeable Pavers	Pop-up Commercial Space (Small Business, Farmer's Market, etc.)	Temporary/Rotating Installation	Natural, Accessible, Functional	Do not turn the green space in front of library into a parking lot	Yes	20+ years	65+	More community input	
Open Green Space, Outdoor Seating Area Near the Library	Landscaping, Trees, Gardens, etc., Improved Parking	Weekly	By Car, Parking in the Lot	Too many potholes, too many metered spots	Just a regular (cheapest) parking lot	Flexible Outdoor Gathering Space, Pop-up Commercial Space (Small Business, Farmer's Market, etc.)	Not necessary	Family Friendly, Functional, Traditional	Keep it simple	Yes	0-5 years	26-40	No	

What is your favorite thing(s) about the Civic Campus now?	What would you be most excited to see included in a new Civic Campus?	How often do you go to the Civic Center?	How do you usually travel to the Civic Center?	What do you think could improve your experience moving around the Civic Center?	PARKING: The redesign of the Civic Center will need to include additional parking, but that doesn't have to mean an empty asphalt lot! Which of the following images do you find most appealing?	EVENTS: The Civic Center can support space for pop-ups and special events. Which of these images do you find most appealing?	ART: Public art could be integrated into the site design to serve as both decoration and functional use. Which of these images do you find most appealing?	What words describe how you'd like the new Civic Center to feel? (Select 3)	Is there anything else you'd like us to know about what you'd like to see included in the new Civic Center Campus?	Are you a current resident of Grosse Pointe Park?	How long have you lived in Grosse Pointe Park?	What is your age?	Would you be interested in engaging further on this project?	If you responded yes to the question above, please share your best email address.
Open Green Space, Library and Mail drop boxes	Landscaping, Trees, Gardens, etc., Play Area	Multiple times each week	On Foot	Happy with it now.	All those solutions either look bad (the paint) or just take away extra space without adding much. I mean a parking lot with a couple trees is still a parking lot, all those patches look silly.	Flexible Outdoor Gathering Space	Sculpture or Furniture made from reused Patterson Playscape materials, Functional Art, Playful	Family Friendly, Casual, Inviting, Functional	I enjoy how it is now. The green space is nice. I could see it turned into a bit of a garden with some benches to take a look out to. Maybe have something interesting a kid could climb on. Rather it be simple, functional.	Yes	20+ years	26-40	Yes	Amandadoren@gmail.com
Open Green Space, Outdoor Seating Area Near the Library, Bike Repair Station	Event Space, Play Area, Art	Monthly	By Car, Parking in the Lot	Better parking	Bioswales, Permeable Pavers	Food Truck Pop-up Space	Temporary/Rotating Installation, Functional Art	Family Friendly, Natural, Inviting	Drainage for flood water	Yes	6-10 years	26-40	Yes	familydreaver@gmail.com
Library and Mail drop boxes	Landscaping, Trees, Gardens, etc.	Monthly	By Car, But I Don't Park in the Lot	strong men to carry me around	Bioswales, Permeable Pavers	Flexible Outdoor Gathering Space, Food Truck Pop-up Space, Pop-up Commercial Space (Small Business, Farmer's Market, etc.)	Temporary/Rotating Installation, Functional Art	Family Friendly, Beautiful, Functional	nice survey	Yes	20+ years	41-65	Yes	valerieaq@yahoo.com
Open Green Space	Play Area	Monthly	On Foot	More interactive green space. Outdoor play for little before or after the library.	Bioswales	Pop-up Commercial Space (Small Business, Farmer's Market, etc.)	Playful	Family Friendly, Dynamic, Functional	Thank you!	Yes	0-5 years	26-40	Yes	lsceich@gmail.com
Open Green Space, Outdoor Seating Area Near the Library	Play Area, Welcoming signage and safer pedestrian experience	Weekly	On Foot	Safer and more clearly identified access along Maryland st.	Mixed Pavement and Vegetation, Bioswales, No more parking! Redesign the current lots to be more functional and safe - they are never at capacity and parking is not a challenge.	Pop-up Commercial Space (Small Business, Farmer's Market, etc.), Play area for small kids. Residents in this area are the furthest from existing park spaces in town and have the smallest yards for kids to play.	Playful	Family Friendly, Accessible, Inviting	No more unnecessary parking!!! Be mindful of the neighbors surrounding this location so what they see is nice not just a noisy place or flat parking lot	Yes	6-10 years	26-40	No	
Open Green Space, Library and Mail drop boxes, Outdoor Seating Area Near the Library	Landscaping, Trees, Gardens, etc., Improved Parking	Rarely	By Car, Parking in the Lot	Improved parking and fix the pot holes. Eliminate paid parking	Mixed Pavement and Vegetation, Bioswales	Flexible Outdoor Gathering Space, Food Truck Pop-up Space, Pop-up Commercial Space (Small Business, Farmer's Market, etc.)	Place Specific Art, Sculpture or Furniture made from reused Patterson Playscape materials, Playful	Family Friendly, Inviting, Functional		Yes	20+ years	65+	No	
Open Green Space	Landscaping, Trees, Gardens, etc.	Monthly	By Car, Parking in the Lot	Nothing	Colorful Painted Asphalt	Food Truck Pop-up Space (Small Business, Farmer's Market, etc.)	Playful	Casual, Inviting, Beautiful	No	Yes	6-10 years	26-40	Yes	Haley.ryenhuis@gmail.com
Outdoor Seating Area Near the Library	More Outdoor Seating, Event Space, Landscaping, Trees, Gardens, etc., Play Area, Art	Weekly	By Car, But I Don't Park in the Lot	More interesting things in the lots	Mixed Pavement and Vegetation	Flexible Outdoor Gathering Space	Playful	Family Friendly, Natural, Beautiful	Thanks!	Yes	0-5 years	26-40	Yes	anovoselick@gmail.com
Outdoor Seating Area Near the Library	More Outdoor Seating, Landscaping, Trees, Gardens, etc.	Weekly	On Foot	Repaired lots	Mixed Pavement and Vegetation, Bioswales, Permeable Pavers	Flexible Outdoor Gathering Space, Pop-up Commercial Space (Small Business, Farmer's Market, etc.)	Sculpture or Furniture made from reused Patterson Playscape materials, Functional Art	Family Friendly, Historic, Beautiful, Functional	Safety	Yes	11-20 years	26-40	Yes	SARAHACHS2020@GMAIL.COM
Open Green Space	Landscaping, Trees, Gardens, etc.	Multiple times each week	On Foot	repave the parking lot that is already there, between the library and city hall	Mixed Pavement and Vegetation	Food Truck Pop-up Space	Playful	Natural	Np	Yes	11-20 years	41-65	No	
The grass field and green space	Event Space, Landscaping, Trees, Gardens, etc., Play Area	Monthly	By Car, Parking in the Lot	Utilize the open lot for something other than a parking lot	Bioswales, Permeable Pavers	Flexible Outdoor Gathering Space, Food Truck Pop-up Space, Pop-up Commercial Space (Small Business, Farmer's Market, etc.)	Playful, Trees and plants, not art	Family Friendly, Dynamic, Beautiful, Functional	No	Yes	6-10 years	26-40	No	
Open Green Space	Landscaping, Trees, Gardens, etc.	Weekly	By Bike	Better pedestrian pathing	Bioswales	Flexible Outdoor Gathering Space	Playful	Family Friendly, Natural, Accessible	No	Yes	20+ years	41-65	No	
The beautiful, historic buildings.	Landscaping, Trees, Gardens, etc., Improved Parking	Monthly	By Car, Parking in the Lot	The current parking lot needs to be upgraded as well as the alley.	Mixed Pavement and Vegetation, Bioswales, Permeable Pavers	Built In Stage (Eastpointe City Hall)	Place Specific Art	Historic, Beautiful, Functional	More trees is better.	No		41-65	Yes	sean.cotton@caidanlic.com
Open Green Space, Library and Mail drop boxes, Outdoor Seating Area Near the Library, Bike Repair Station	Nothing new	Multiple times each week	On Foot	Nothing	Permeable Pavers	Flexible Outdoor Gathering Space	Functional Art	Natural, Casual, Functional	It's already pretty awesome and doesn't need any significant additions	Yes	6-10 years	41-65	No	
Open Green Space, Library and Mail drop boxes	Event Space, Play Area	Weekly	By Bike	I think we can do better than a parking lot, but I'm not so sure having more outdoor seating will attract people either. Unless there is something happening as far as events like a farmers market, food truck court, Biergarten, movie nights, beer tent charity bingo, safety town, or any other things regularly occurring, it will remain a drab parking lot	Let's be honest with each other, these are all pretty bad.	Temporary/Mobile Stage and Seating, Food Truck Pop-up Space, Pop-up Commercial Space (Small Business, Farmer's Market, etc.)	Sculpture or Furniture made from reused Patterson Playscape materials, Functional Art	Historic, Beautiful, Functional	Brick pavers are nice	Yes	6-10 years	26-40	Yes	Matt.Ochab@gmail.com

What is your favorite thing(s) about the Civic Campus now?	What would you be most excited to see included in a new Civic Campus?	How often do you go to the Civic Center?	How do you usually travel to the Civic Center?	What do you think could improve your experience moving around the Civic Center?	PARKING: The redesign of the Civic Center will need to include additional parking, but that doesn't have to mean an empty asphalt lot! Which of the following images do you find most appealing?	EVENTS: The Civic Center can support space for pop-ups and special events. Which of these images do you find most appealing?	ART: Public art could be integrated into the site design to serve as both decoration and functional use. Which of these images do you find most appealing?	What words describe how you'd like the new Civic Center to feel? (Select 3)	Is there anything else you'd like us to know about what you'd like to see included in the new Civic Center Campus?	Are you a current resident of Grosse Pointe Park?	How long have you lived in Grosse Pointe Park?	What is your age?	Would you be interested in engaging further on this project?	If you responded yes to the question above, please share your best email address.
Open Green Space, Library and Mail drop boxes, Outdoor Seating Area Near the Library	More Outdoor Seating, Landscaping, Trees, Gardens, etc., Play Area, Art	Weekly	On Foot	I would personally love to see the green space landscaped with more wild flowers and such to provide a beautiful courtyard of sorts for personal use, library outdoor program use, etc.	Bioswales, Colorful Painted Asphalt	Flexible Outdoor Gathering Space, Temporary/Mobile Stage and Seating	Temporary/Rotating Installation, Place Specific Art, Sculpture or Furniture made from reused Patterson Playscape materials, Functional Art, Playful, I would absolutely love to see an arts commission established to help facilitate and support arts programs presented by the city.	Family Friendly, Natural, Inviting	In addition to this great survey, please be sure to find ways to include residents throughout the process.	Yes	11-20 years	41-65	Yes	guz23@yahoo.com
Open Green Space, Library and Mail drop boxes	Landscaping, Trees, Gardens, etc., Play Area, Art	Rarely	On Foot	Community garden space, emphasizing the history of our neighborhood as French ribbon farms while giving a community space to collaborate and work together.	Bioswales, Colorful Painted Asphalt, Please seriously reconsider the need for motor vehicle based parking. Make it easier and more convenient for other modes of transportation	Temporary/Mobile Stage and Seating, Pop-up Commercial Space (Small Business, Farmer's Market, etc.), Community garden, see other write in response	Temporary/Rotating Installation, Playful	Family Friendly, Natural, Dynamic, Inviting, Beautiful, Functional	Seriously if we are not legally obligated to increase parking DO NOT DO IT. It is absolutely terrible land use in an environment that should encourage the neighborhood itself to gather in this place. Parking lots add more barriers to the neighborhood engaging with and enjoying the space. In fact if you could block the roads to through car traffic on 2 sides and make them bike/walking/running/art paths all the better.	No		26-40	Yes	dan.sallen@gmail.com
Outdoor Seating Area Near the Library, Bike Repair Station	More Outdoor Seating, Landscaping, Trees, Gardens, etc., Play Area	Rarely	By Car, Parking in the Lot	More green spaces, a place to connect with others. A pavilion for shade	Bioswales, Permeable Pavers	Food Truck Pop-up Space, Pop-up Commercial Space (Small Business, Farmer's Market, etc.)	Functional Art	Natural, Accessible, Inviting	More plants and places to gather	No		26-40	Yes	Brithelsing@gmail.com
Open Green Space, Library and Mail drop boxes, Outdoor Seating Area Near the Library	More Outdoor Seating, Landscaping, Trees, Gardens, etc.	Weekly	By Car, Parking in the Lot	Re-pave the existing lot with permeable surface, add trees and native plants.	Mixed Pavement and Vegetation, Bioswales, Permeable Pavers	Food Truck Pop-up Space, Pop-up Commercial Space (Small Business, Farmer's Market, etc.)	Functional Art	Natural, Accessible, Functional	Native to Michigan plant materials	Yes	20+ years	65+	Yes	rita.taub@yahoo.com
Open Green Space, Library and Mail drop boxes	Landscaping, Trees, Gardens, etc., Play Area	Weekly	By Car, Parking in the Lot	A clearly marked path for bikes from either Maryland or the other side street.	Mixed Pavement and Vegetation, Bioswales, Permeable Pavers	Flexible Outdoor Gathering Space, Food Truck Pop-up Space	Playful	Family Friendly, Accessible, Inviting	My kids are growing out of a playground but I still think it would be a wonderful feature for the library area that draws so many families	Yes	0-5 years	26-40	No	
Outdoor Seating Area Near the Library, Bike Repair Station	Landscaping, Trees, Gardens, etc., Play Area, Art	Weekly	By Car, Parking in the Lot	Pathways	Bioswales, Colorful Painted Asphalt	Flexible Outdoor Gathering Space, Food Truck Pop-up Space, Pop-up Commercial Space (Small Business, Farmer's Market, etc.)	Sculpture or Furniture made from reused Patterson Playscape materials, Playful	Family Friendly, Fresh, Inviting, Beautiful, Functional	Make it a place to visit	Yes	6-10 years	26-40	No	
Library and Mail drop boxes	Improved Parking	Every other month	By Car, Parking in the Lot	More parking. Smoother parking lot.	Mixed Pavement and Vegetation	Food Truck Pop-up Space, Pop-up Commercial Space (Small Business, Farmer's Market, etc.)	Place Specific Art	Casual, Fresh, Functional	No	Yes	20+ years	41-65	No	
Open Green Space, Library and Mail drop boxes, Outdoor Seating Area Near the Library, Bike Repair Station	More Outdoor Seating, Event Space, Landscaping, Trees, Gardens, etc., Play Area, Improved Parking	Weekly	On Foot	better pedestrian access	Bioswales, Permeable Pavers	Flexible Outdoor Gathering Space, Built In Stage (Eastpointe City Hall)	Temporary/Rotating Installation, Functional Art, Playful	Family Friendly, Natural, Casual, Accessible, Dynamic, Fresh, Inviting, Beautiful, Functional	Better landscaping	Yes	11-20 years	41-65	No	
Bike Repair Station	More Outdoor Seating, Landscaping, Trees, Gardens, etc., Improved Parking	Weekly	By Bike	A bike/ walking path	Mixed Pavement and Vegetation	Food Truck Pop-up Space	Functional Art	Inviting	More bike parking	Yes	20+ years	41-65	No	
Library and Mail drop boxes	Play Area, Improved Parking	Weekly	By Car, Parking in the Lot	More free parking for the library.	Mixed Pavement and Vegetation	Flexible Outdoor Gathering Space	Functional Art, Playful	Family Friendly, Inviting	No	Yes	0-5 years	26-40	Yes	ccvaughn@gmail.com
Open Green Space, Library and Mail drop boxes, Outdoor Seating Area Near the Library, Bike Repair Station	Landscaping, Trees, Gardens, etc., Art	Weekly	By Car, But I Don't Park in the Lot	More natural landscaping.	Bioswales	Flexible Outdoor Gathering Space	Temporary/Rotating Installation, Functional Art, Playful	Natural, Accessible, Fresh, Inviting, Beautiful, Functional	Not anything specific at this time.	Yes	20+ years	41-65	No	
Outdoor Seating Area Near the Library	More Outdoor Seating, Landscaping, Trees, Gardens, etc., Play Area, Art	Weekly	By Car, Parking in the Lot	Not sure	Mixed Pavement and Vegetation	Flexible Outdoor Gathering Space, Built In Stage (Eastpointe City Hall), Food Truck Pop-up Space, Pop-up Commercial Space (Small Business, Farmer's Market, etc.)	Temporary/Rotating Installation, Functional Art, Playful	Family Friendly, Dynamic, Fresh, Inviting	Make it a gathering space for the community	Yes	6-10 years	41-65	No	
Open Green Space, Library and Mail drop boxes, Outdoor Seating Area Near the Library	More Outdoor Seating, Event Space, Landscaping, Trees, Gardens, etc., Play Area	Monthly	By Car, Parking in the Lot	Outdoor area and seating, improved landscaping	Mixed Pavement and Vegetation, Bioswales, Permeable Pavers	Flexible Outdoor Gathering Space, Built In Stage (Eastpointe City Hall), Food Truck Pop-up Space, Pop-up Commercial Space (Small Business, Farmer's Market, etc.)	Functional Art, Playful	Family Friendly, Natural, Accessible, Historic, Inviting, Beautiful, Functional	Functional, natural space that residents can enjoy would be much needed	Yes	0-5 years	26-40	No	
Open Green Space	Landscaping, Trees, Gardens, etc., Play Area	Weekly	On Foot	Preserve the green space	No parking	None-green space	Playful	Natural	No parking lot	Yes	11-20 years	41-65	No	

What is your favorite thing(s) about the Civic Campus now?	What would you be most excited to see included in a new Civic Campus?	How often do you go to the Civic Center?	How do you usually travel to the Civic Center?	What do you think could improve your experience moving around the Civic Center?	PARKING: The redesign of the Civic Center will need to include additional parking, but that doesn't have to mean an empty asphalt lot! Which of the following images do you find most appealing?	EVENTS: The Civic Center can support space for pop-ups and special events. Which of these images do you find most appealing?	ART: Public art could be integrated into the site design to serve as both decoration and functional use. Which of these images do you find most appealing?	What words describe how you'd like the new Civic Center to feel? (Select 3)	Is there anything else you'd like us to know about what you'd like to see included in the new Civic Center Campus?	Are you a current resident of Grosse Pointe Park?	How long have you lived in Grosse Pointe Park?	What is your age?	Would you be interested in engaging further on this project?	If you responded yes to the question above, please share your best email address.
Open Green Space	Landscaping, Trees, Gardens, etc.	Multiple times each week	On Foot	Fix the broken asphalt and add trees and landscaping to green space in front of library.	Bioswales	Open green space	Functional Art	Natural, Accessible, Beautiful	More resident input, and transparency, including the cost/budget/maintenance. And please stop with the autocracy mentality as if we are beholden to "donors." It's offensive.	Yes	20+ years	41-65	Possibly. I'll reach out.	
Open Green Space	More Outdoor Seating, Landscaping, Trees, Gardens, etc., Play Area	Weekly	By Car, But I Don't Park in the Lot	More green space.	More green, we dont need more parking	Flexible Outdoor Gathering Space, Do not take away from existing brick & mortar businesses by encouraging food trucks. They don't contribute to neighborhoods	Playscape for kids or green space. Dog park	Family Friendly, Natural, Beautiful	More free space. No more parking	Yes	11-20 years	41-65	It wont help. This process is preordained.	
Open Green Space, Outdoor Seating Area Near the Library	More Outdoor Seating, Event Space, Landscaping, Trees, Gardens, etc., Play Area	Weekly	By Car, Parking in the Lot	Keeping the green, community space and not just using it for parking. Events for individuals, families and children should be a top priority.	Bioswales	Flexible Outdoor Gathering Space	Sculpture or Furniture made from reused Patterson Playscape materials	Family Friendly, Inviting, Beautiful	I think the family friendly, inviting place is key and do not want to see the space made into a parking lot.	Yes	6-10 years	26-40	No	
Open Green Space, Outdoor Seating Area Near the Library, Bike Repair Station	More Outdoor Seating, Landscaping, Trees, Gardens, etc., Art	Monthly	By Car, Parking in the Lot		Mixed Pavement and Vegetation, Bioswales, Permeable Pavers	Flexible Outdoor Gathering Space, Built In Stage (Eastpointe City Hall)	Temporary/Rotating Installation, Sculpture or Furniture made from reused Patterson Playscape materials, Functional Art, Playful	Family Friendly, Natural, Accessible, Inviting, Beautiful, Functional	What is it?	Yes	6-10 years	26-40	Yes	Elizabethveronica12@gmail.com
Open Green Space, Library and Mail drop boxes	Landscaping, Trees, Gardens, etc.	Rarely	On Foot	N/A	Mixed Pavement and Vegetation	Food Truck Pop-up Space	Functional Art	Natural, Historic	N/A	Yes	11-20 years	41-65	No	
Open Green Space, Library and Mail drop boxes	Landscaping, Trees, Gardens, etc., Play Area	Monthly	By Car, Parking in the Lot	Make it a more welcoming place to be.	Bioswales, Permeable Pavers	Flexible Outdoor Gathering Space	Temporary/Rotating Installation	Family Friendly, Natural, Accessible	I think the space should be eco friendly and accessible for the entire community.	Yes	6-10 years	41-65	I wish to remain anonymous	
Library and Mail drop boxes	Landscaping, Trees, Gardens, etc., Improved Parking	Weekly	By Car, Parking in the Lot	Updated parking and landscaping	Permeable Pavers	Pop-up Commercial Space (Small Business, Farmer's Market, etc.)	Sculpture or Furniture made from reused Patterson Playscape materials	Accessible, Beautiful, Functional	Pollinator gardens. Please don't use toxic weed killers and fertilizers.	Yes	20+ years	65+	No	
Library and Mail drop boxes	Improved Parking	Monthly	By Car, Parking in the Lot	Fixing the pavement n improving the look of the nearby alley	Colorful Painted Asphalt	Flexible Outdoor Gathering Space, Food Truck Pop-up Space	Temporary/Rotating Installation	Family Friendly, Fresh, Beautiful	No	Yes	20+ years	41-65	No	
Open Green Space	Landscaping, Trees, Gardens, etc., Play Area	Weekly	On Foot	I love the green space! My son and his friends go up there to play catch or kick a soccer ball around all the time!	Mixed Pavement and Vegetation, Bioswales	Flexible Outdoor Gathering Space, Pop-up Commercial Space (Small Business, Farmer's Market, etc.)	Temporary/Rotating Installation, Functional Art	Family Friendly, Natural, Inviting, Functional	Please keep green space! And make sure any parking is done in a very sustainable way.	Yes	6-10 years	41-65	Yes	kemp817@gmail.com
Open Green Space, Library and Mail drop boxes	Landscaping, Trees, Gardens, etc., Improved Parking	Weekly	By Car, Parking in the Lot	Sidewalks to access all buildings. Repave the lot. Defined walkway between library and civic building. Replace old landscaping in front of civic building and fix sidewalk and porch.	Mixed Pavement and Vegetation, Permeable Pavers	Pop-up Commercial Space (Small Business, Farmer's Market, etc.)	Functional Art	Accessible, Inviting, Functional	So glad you are trying to improve this. It is currently embarrassing how bad the lot is and the old civic building is badly neglected. Our city needs a better image. Thank you.	Yes	20+ years	41-65	Depends on the process and time commitment	
Library and Mail drop boxes	Landscaping, Trees, Gardens, etc., Play Area	Monthly	By Car, Parking in the Lot	A few more parking spaces.	Mixed Pavement and Vegetation, Colorful Painted Asphalt	Flexible Outdoor Gathering Space, Pop-up Commercial Space (Small Business, Farmer's Market, etc.)	Temporary/Rotating Installation, Playful	Family Friendly, Fresh, Inviting	Innovative	Yes	0-5 years	41-65	Yes	andybissonette@gmail.com
Open Green Space, Library and Mail drop boxes	More Outdoor Seating, Landscaping, Trees, Gardens, etc., Play Area	Rarely	By Car, Parking in the Lot	Parking lot layout improvement	Mixed Pavement and Vegetation, Bioswales, Colorful Painted Asphalt	Pop-up Commercial Space (Small Business, Farmer's Market, etc.)	Temporary/Rotating Installation, Sculpture or Furniture made from reused Patterson Playscape materials	Family Friendly, Natural, Casual, Accessible, Functional	Family oriented	Yes	0-5 years	41-65	No	
Open Green Space, Library and Mail drop boxes, Outdoor Seating Area Near the Library, Bike Repair Station	More Outdoor Seating, Landscaping, Trees, Gardens, etc., Play Area, Art	Monthly	On Foot	Less cars	Bioswales, Permeable Pavers	Flexible Outdoor Gathering Space, Pop-up Commercial Space (Small Business, Farmer's Market, etc.)	Playful	Natural, Casual, Accessible, Inviting, Beautiful	No	Yes	11-20 years	41-65	Maybe	
Library and Mail drop boxes	Landscaping, Trees, Gardens, etc.	Weekly	On Foot	Not sure	Bioswales	Flexible Outdoor Gathering Space	Functional Art	Family Friendly, Natural, Inviting	No improved landscaping and traffic flow, more walkable, natural setting maintaining historic architecture	Yes	0-5 years	41-65	Yes	Jerrie_lovell1975@hotmail.com
Library and Mail drop boxes	Landscaping, Trees, Gardens, etc., Improved Parking	Multiple times each week	By Car, Parking in the Lot	better parking and more sense of arrival with improved landscaping	Bioswales	Food Truck Pop-up Space, Pop-up Commercial Space (Small Business, Farmer's Market, etc.)	Place Specific Art	Accessible, Inviting, Beautiful, Functional		Yes	6-10 years	41-65	Yes	jr1@jrtumbull.com
Open Green Space, Library and Mail drop boxes, Outdoor Seating Area Near the Library, Bike Repair Station	Landscaping, Trees, Gardens, etc.	Weekly	By Car, Parking in the Lot	Parking /traffic flow	Mixed Pavement and Vegetation	Flexible Outdoor Gathering Space	Functional Art	Fresh, Beautiful, Functional	No	Yes	11-20 years	41-65	No	
Open Green Space	Improved Parking	Monthly	By Car, Parking in the Lot	Better parking for the library.	Mixed Pavement and Vegetation	Flexible Outdoor Gathering Space	Sculpture or Furniture made from reused Patterson Playscape materials	Natural, Historic, Beautiful	No	Yes	20+ years	65+	No	
Library and Mail drop boxes	More Outdoor Seating, Event Space, Landscaping, Trees, Gardens, etc.	Monthly	By Car, Parking in the Lot	N/A	Mixed Pavement and Vegetation, Bioswales	Flexible Outdoor Gathering Space, Food Truck Pop-up Space, Pop-up Commercial Space (Small Business, Farmer's Market, etc.)	Temporary/Rotating Installation, Playful	Family Friendly, Accessible, Dynamic, Fresh, Inviting, Beautiful	N/A	Yes	0-5 years	26-40	No	

What is your favorite thing(s) about the Civic Campus now?	What would you be most excited to see included in a new Civic Campus?	How often do you go to the Civic Center?	How do you usually travel to the Civic Center?	What do you think could improve your experience moving around the Civic Center?	PARKING: The redesign of the Civic Center will need to include additional parking, but that doesn't have to mean an empty asphalt lot! Which of the following images do you find most appealing?	EVENTS: The Civic Center can support space for pop-ups and special events. Which of these images do you find most appealing?	ART: Public art could be integrated into the site design to serve as both decoration and functional use. Which of these images do you find most appealing?	What words describe how you'd like the new Civic Center to feel? (Select 3)	Is there anything else you'd like us to know about what you'd like to see included in the new Civic Center Campus?	Are you a current resident of Grosse Pointe Park?	How long have you lived in Grosse Pointe Park?	What is your age?	Would you be interested in engaging further on this project?	If you responded yes to the question above, please share your best email address.
Open Green Space, Library and Mail drop boxes, Outdoor Seating Area Near the Library, Butterfly gardens and native plant garden. Open space for community activities. 1000 hours outdoors and yoga classes.	More Outdoor Seating, Landscaping, Trees, Gardens, etc., Play Area, Our family goes to the library often and despite the small parking area we always find a close spot to park. Additional parking is not needed and would create more congestion. I like that the space between library and Jefferson is a pedestrian space. I have often let my child run out in this field because it is so big and far from traffic.	Weekly	On Foot	Pedestrian focused design.	Bioswales, Parking options so pedestrians don't have to cross a line of traffic. IE if you bike or walk from Maryland you have to go through the parking to get to the library.	Flexible Outdoor Gathering Space. With two large city parks, schools with fields and two major streets that host festivals it would be important for this space to offer something to the city that is not already in use.	Sculpture or Furniture made from reused Patterson Playscape materials, Functional Art, Playful	Family Friendly, Accessible, Functional	A resource that the library has offered is W-FI outside of the library. I have used this in a pinch, just park outside the library and connect. It would be nice to have an outdoor seating area designed around this resource.	Yes	6-10 years	26-40	Yes	emmmill42@gmail.com
Open Green Space, Library and Mail drop boxes, Outdoor Seating Area Near the Library	More Outdoor Seating, Landscaping, Trees, Gardens, etc.	Weekly	By Car, Parking in the Lot	Beautifully the area with green space, plantings and more seating	Mixed Pavement and Vegetation, Bioswales, Colorful Painted Asphalt	Flexible Outdoor Gathering Space, Food Truck Pop-up Space, Pop-up Commercial Space (Small Business, Farmer's Market, etc.)	Temporary/Rotating Installation, Functional Art, Playful	Fresh, Beautiful	No	Yes	20+ years	65+	No	
Outdoor Seating Area Near the Library	Play Area	Rarely	By Car, Parking in the Lot		Mixed Pavement and Vegetation	Food Truck Pop-up Space	Sculpture or Furniture made from reused Patterson Playscape materials	Family Friendly, Inviting, Functional		Yes	0-5 years	26-40	No	
Open Green Space, Library and Mail drop boxes	Landscaping, Trees, Gardens, etc.	Weekly	By Car, Parking in the Lot	Turning the vacant land between the library and Jefferson Ave. into a landscaped community garden area for children to play and residents to walk and spend time.	Bioswales	Built In Stage (Eastpointe City Hall)	Functional Art	Family Friendly, Natural, Casual, Beautiful	What I would hope to see is that this survey is not a disingenuous attempt to make residents "feel" they have actual input, when the decisions are "already made".	Yes	6-10 years	65+	perhaps, much depends what transpires in the future	
Open Green Space	Landscaping, Trees, Gardens, etc.	Rarely	By Car, Parking in the Lot	Beautification	Mixed Pavement and Vegetation	Built In Stage (Eastpointe City Hall), Pop-up Commercial Space (Small Business, Farmer's Market, etc.)	Place Specific Art	Beautiful	no	Yes	20+ years	65+	No	
Open Green Space	Landscaping, Trees, Gardens, etc.	Rarely	On Foot	Keep the green	Bioswales, Why will the redesign "need" additional parking? What study has been done that indicates additional parking is needed at the civic center?	Flexible Outdoor Gathering Space	Functional Art	Family Friendly, Natural, Casual	Na	Yes	6-10 years	26-40	No	
Open Green Space, Library and Mail drop boxes	Landscaping, Trees, Gardens, etc., Improved Parking	Monthly	By Car, Parking in the Lot	Better parking	Mixed Pavement and Vegetation, Bioswales	Flexible Outdoor Gathering Space	None	Historic, Functional, Traditional	Avoid painted pavement	Yes	11-20 years	41-65	No	
Bike Repair Station	More Outdoor Seating, Landscaping, Trees, Gardens, etc., Play Area	Monthly	On Foot	I walk/bike with my 4 and 2 year old, always disliked having to walk through the bumpy pothole parking lot. Bikes and strollers get stuck. Wish there was a sidewalk along the library (maryland side) that doesn't dead end into a wall. A better, safer path for kids and bikes would be nice, to those heading toward Maryland	Bioswales, Colorful Painted Asphalt	Flexible Outdoor Gathering Space, Temporary/Mobile Stage and Seating, Food Truck Pop-up Space	Temporary/Rotating Installation, Sculpture or Furniture made from reused Patterson Playscape materials, Playful	Family Friendly, Natural, Accessible, Inviting, Beautiful, Functional	A useable, fun, kid friendly flowering garden space to explore. Small water feature? Coy pond? Within distance to playspace. Coffee/coco/water/smooth hies? For enjoyment while either reading outside or utilizing playspace.	Yes	6-10 years	26-40	Not at this time	
Outdoor Seating Area Near the Library, Bike Repair Station	More Outdoor Seating, Landscaping, Trees, Gardens, etc., Play Area, Art	Several times a year	On Foot	More walking, garden paths	Bioswales	Flexible Outdoor Gathering Space, Built In Stage (Eastpointe City Hall), Pop-up Commercial Space (Small Business, Farmer's Market, etc.)	Temporary/Rotating Installation, Functional Art, Playful	Natural, Inviting, Functional	Welcomeing space inclusive for all of our community	Yes	6-10 years	41-65	Possibly depending on the commitment	
Open Green Space, Outdoor Seating Area Near the Library	More Outdoor Seating, Landscaping, Trees, Gardens, etc., Art	Monthly	By Car, Parking in the Lot	Better roads, better parking, paths for people to walk	Bioswales	Pop-up Commercial Space (Small Business, Farmer's Market, etc.)	Functional Art	Family Friendly, Natural, Accessible, Inviting, Beautiful, Functional	No	Yes	6-10 years	41-65	No	
Library and Mail drop boxes	Play Area	Rarely	By Car, Parking in the Lot	Gardens and Children's Play Structure	Bioswales	Flexible Outdoor Gathering Space	Sculpture or Furniture made from reused Patterson Playscape materials, Playful	Family Friendly, Natural, Accessible, Inviting, Beautiful	A family friendly gathering space to hold outdoor functions that has beautiful gardens and a play structure.	Yes	11-20 years	26-40	Yes	stephaniebutler525@gmail.com
Library and Mail drop boxes	Landscaping, Trees, Gardens, etc.	Weekly	By Car, Parking in the Lot	Less congestion	Bioswales	Flexible Outdoor Gathering Space	Playful	Natural, Inviting, Beautiful	Some how mask the actual parking area	Yes	6-10 years	65+	No	
Library and Mail drop boxes	Landscaping, Trees, Gardens, etc.	Rarely	By Car, Parking in the Lot	Better signage	Mixed Pavement and Vegetation, Neutral Painted Asphalt	Flexible Outdoor Gathering Space, Food Truck Pop-up Space, Pop-up Commercial Space (Small Business, Farmer's Market, etc.)	Sculpture or Furniture made from reused Patterson Playscape materials, Playful	Natural, Inviting, Beautiful	News bulletin space for local events, reminders, calendar, etc	Yes	6-10 years	26-40	Yes	Sara.biery@outlook.com

What is your favorite thing(s) about the Civic Campus now?	What would you be most excited to see included in a new Civic Campus?	How often do you go to the Civic Center?	How do you usually travel to the Civic Center?	What do you think could improve your experience moving around the Civic Center?	PARKING: The redesign of the Civic Center will need to include additional parking, but that doesn't have to mean an empty asphalt lot. Which of the following images do you find most appealing?	EVENTS: The Civic Center can support space for pop-ups and special events. Which of these images do you find most appealing?	ART: Public art could be integrated into the site design to serve as both decoration and functional use. Which of these images do you find most appealing?	What words describe how you'd like the new Civic Center Campus? (Select 3)	Is there anything else you'd like us to know about what you'd like to see included in the new Civic Center Campus?	Are you a current resident of Grosse Pointe Park?	How long have you lived in Grosse Pointe Park?	What is your age?	Would you be interested in engaging further on this project?	If you responded yes to the question above, please share your best email address.
Open Green Space, Outdoor Seating Area Near the Library	More Outdoor Seating, Landscaping, Trees, Gardens, etc.	Multiple times each week	On Foot	Less pavement, more greenspace and more seating.	Permeable Pavers	Flexible Outdoor Gathering Space	Functional Art	Natural, Casual, Accessible, Beautiful	Please design so that runoff of storm water is eliminated. Crushed concrete can be used for all parking and driving areas. We must not burden our antiquated and inadequate storm sewers.	Yes	20+ years	65+	Yes	25dbst@gmail.com
Library and Mail drop boxes	Landscaping, Trees, Gardens, etc., Play Area	Monthly	On Foot	Better pedestrian path from Lakepointe to city hall entrance	Bioswales	Food Truck Pop-up Space, Pop-up Commercial Space (Small Business, Farmer's Market, etc.)	Sculpture or Furniture made from reused Patterson Playscape materials	Family Friendly, Natural, Casual, Accessible	Maybe a gazebo in the open space or some shaded cover	Yes	6-10 years	41-65	Yes	Parcival007@gmail.com
Library and Mail drop boxes, Outdoor Seating Area Near the Library	Landscaping, Trees, Gardens, etc.	Rarely	By Car, Parking in the Lot	More short-term, non-meter parking	Mixed Pavement and Vegetation, Bioswales, Neutral Painted Asphalt	Flexible Outdoor Gathering Space, Food Truck Pop-up Space, Pop-up Commercial Space (Small Business, Farmer's Market, etc.)	Place Specific Art, Sculpture or Furniture made from reused Patterson Playscape materials, Playful	Natural, Casual, Fresh, Inviting, Beautiful	no	Yes	0-5 years	26-40	No	
Outdoor Seating Area Near the Library	Landscaping, Trees, Gardens, etc., Art	Weekly	By Car, Parking in the Lot	Prettier landscaping and art	Permeable Pavers	Food Truck Pop-up Space, Pop-up Commercial Space (Small Business, Farmer's Market, etc.)	Functional Art, Playful	Family Friendly, Dynamic, Inviting	More green space, landscaping and flowers	Yes	6-10 years	41-65	No	
Open Green Space, Outdoor Seating Area Near the Library, Bike Repair Station	Landscaping, Trees, Gardens, etc., Art	Weekly	On Foot	Better landscape	Mixed Pavement and Vegetation	Food Truck Pop-up Space	Temporary/Rotating Installation, Sculpture or Furniture made from reused Patterson Playscape materials, Functional Art	Inviting	No asphalt	Yes	20+ years	65+	No	
Open Green Space, Library and Mail drop boxes, Outdoor Seating Area Near the Library	More Outdoor Seating, Landscaping, Trees, Gardens, etc.	Multiple times each week	On Foot	Better sidewalks, we have to cross the parking lot a lot and there aren't designated spots for walking.	Bioswales, Permeable Pavers	Flexible Outdoor Gathering Space, Built In Stage (Eastpointe City Hall), Food Truck Pop-up Space, Pop-up Commercial Space (Small Business, Farmer's Market, etc.)	Temporary/Rotating Installation, Functional Art, Playful	Family Friendly, Natural, Historic, Inviting, Beautiful	As a resident of Lakepointe, I am concerned about the drainage impacts of the changes. Lakepointe already becomes a lake when it rains for a bit, I would hate for more cars to be totaled.	Yes	0-5 years	26-40	No	
Open Green Space, Library and Mail drop boxes	Landscaping, Trees, Gardens, etc.	Weekly	By Car, Parking in the Lot	More gardens, more shade and seating for people to stay and enjoy, wiff! so you can sit and work or connect, food trucks! a coffee cart of some sort, a space for kids to play even if it is simple walking paths and nature based interactions	Mixed Pavement and Vegetation	Food Truck Pop-up Space, Pop-up Commercial Space (Small Business, Farmer's Market, etc.)	Playful	Family Friendly, Accessible, Beautiful	Nothing at this time.	Yes	20+ years	65+	No	
Library and Mail drop boxes	More Outdoor Seating, Landscaping, Trees, Gardens, etc., Play Area	Weekly	By Car, Parking in the Lot	simple walking paths and nature based interactions	Mixed Pavement and Vegetation, Bioswales, Permeable Pavers	Flexible Outdoor Gathering Space, Built In Stage (Eastpointe City Hall), Food Truck Pop-up Space	Sculpture or Furniture made from reused Patterson Playscape materials, Playful	Family Friendly, Inviting, Beautiful	wif and shaded seating	Yes	6-10 years	26-40	Yes	anne.m.feder@gmail.com
Library and Mail drop boxes	Landscaping, Trees, Gardens, etc.	Rarely	By Car, Parking in the Lot	Parking and refined landscape and greenery.	Mixed Pavement and Vegetation	Pop-up Commercial Space (Small Business, Farmer's Market, etc.)	Functional Art	Natural, Beautiful, Traditional	Please keep it classic and in keeping with Grosse Pointe architecture.	Yes	20+ years	41-65	Possibly	Cindy.Hanigan@gmail.com
Library and Mail drop boxes, Outdoor Seating Area Near the Library, Bike Repair Station	Event Space, Landscaping, Trees, Gardens, etc., There is a severe lack of low-cost venues for small-to-medium-sized meetings of 20-60 people in flexible spaces, with possible catering service. Civic organizations (Rotary, Boy Scouts, other non-profits, etc...) are always scrambling for a venue to fit these needs. There's always the War Memorial, the Ford House, and Tompkins Center, but those are often too large, or offer too much (and hence too expensive).	Monthly	By Bike	The parking lot needs to be repaired badly. Also, with the city's flooding issues, all new development should include bioswales/rain gardens/other natural landscaping that can hold a lot of water. I know this area was hit particularly hard in the flood a few years ago.	Mixed Pavement and Vegetation, Bioswales, Permeable Pavers	Flexible Outdoor Gathering Space, Pop-up Commercial Space (Small Business, Farmer's Market, etc.), Multiple options for a few covered areas that could be combined or separate, including one that is 4-season.	Functional Art, It would be great if it was built into the landscape, like Maya Lin's "Wave Field" at U of M.	Natural, Accessible, Inviting, Functional	Whatever is done, the process (and funding!) needs to be absolutely transparent. The fiasco surrounding the Schaap Art Center and URIF needs to be avoided at all costs. We should also engage with our neighbors in Jefferson-Chalmers in Detroit to see what they think and what synergies we could develop together. We can't turn our backs to them any longer.	Yes	6-10 years	41-65	The process needs to be very public so that all residents can engage with it.	
Library and Mail drop boxes, Outdoor Seating Area Near the Library	Event Space, Play Area, Athletic fields	Monthly	On Foot	Nothing. It is fine. But athletic fields would help draw me there more.	Mixed Pavement and Vegetation, Bioswales	Flexible Outdoor Gathering Space, Built In Stage (Eastpointe City Hall), Pop-up Commercial Space (Small Business, Farmer's Market, etc.)	Temporary/Rotating Installation, Playful	Family Friendly, Fresh, Inviting, Functional	Keeping it as a green grass field with no programming is a missed opportunity. Focus less on parking solutions and more on adding an amenity or draw that the community wants.	Yes	6-10 years	26-40	Yes	ian.studiers@gmail.com
Open Green Space, Library and Mail drop boxes, Outdoor Seating Area Near the Library, Bike Repair Station	More Outdoor Seating, Event Space	Weekly	On Foot	Less traffic	Colorful Painted Asphalt, Permeable Pavers	Temporary/Mobile Stage and Seating	Temporary/Rotating Installation, Functional Art	Family Friendly, Dynamic, Fresh	Community garden	Yes	20+ years	41-65	No	

What is your favorite thing(s) about the Civic Campus now?	What would you be most excited to see included in a new Civic Campus?	How often do you go to the Civic Center?	How do you usually travel to the Civic Center?	What do you think could improve your experience moving around the Civic Center?	PARKING: The redesign of the Civic Center will need to include additional parking, but that doesn't have to mean an empty asphalt lot. Which of the following images do you find most appealing?	EVENTS: The Civic Center can support space for pop-ups and special events. Which of these images do you find most appealing?	ART: Public art could be integrated into the site design to serve as both decoration and functional use. Which of these images do you find most appealing?	What words describe how you'd like the new Civic Center to feel? (Select 3)	Is there anything else you'd like us to know about what you'd like to see included in the new Civic Center Campus?	Are you a current resident of Grosse Pointe Park?	How long have you lived in Grosse Pointe Park?	What is your age?	Would you be interested in engaging further on this project?	If you responded yes to the question above, please share your best email address.
Library and Mail drop boxes	Event Space, Play Area	Rarely	On Foot	N/A	Mixed Pavement and Vegetation	Food Truck Pop-up Space	Temporary/Rotating Installation	Family Friendly, Fresh, Beautiful	N/A	Yes	6-10 years	26-40	Yes	a.carroll924@gmail.com
Library and Mail drop boxes	Landscaping, Trees, Gardens, etc., Improved Parking	Monthly	By Car, Parking in the Lot	Landscaping, better parking	Bioswales	Pop-up Commercial Space (Small Business, Farmer's Market, etc.)	Functional Art	Natural, Casual, Traditional	no	Yes	20+ years	65+	No	
Open Green Space, Library and Mail drop boxes, Outdoor Seating Area Near the Library	More Outdoor Seating, Event Space, Landscaping, Trees, Gardens, etc., Play Area, Improved Parking, Art	Monthly	By Car, Parking in the Lot	Connected sidewalks	Bioswales	Flexible Outdoor Gathering Space	Functional Art	Family Friendly, Dynamic, Inviting	To make parking less the focus	Yes	20+ years	41-65	Yes	Bridget.cooley@gmail.com
Library and Mail drop boxes, Outdoor Seating Area Near the Library	Landscaping, Trees, Gardens, etc.	Multiple times each week	On Foot	The current grass area is not really utilized	Bioswales, Permeable Pavers	Flexible Outdoor Gathering Space, Pop-up Commercial Space (Small Business, Farmer's Market, etc.)	Place Specific Art, Functional Art	Natural, Beautiful, Functional	Not a giant parking lot	Yes	0-5 years	26-40	Yes	Mattcember@gmail.com
Open Green Space, Library and Mail drop boxes, Bike Repair Station	Event Space, Landscaping, Trees, Gardens, etc., Play Area	Multiple times each week	On Foot	More opportunities to get into the "green space" adjacent to the city hall - pathways, or directing gardens, or some form of civic invitation into that lush green area	Bioswales. This area is prime space that should not be used for vehicular parking. Surface parking in this area would be a travesty. I	Flexible Outdoor Gathering Space. Do not pave this space. It can be used for almost any of the proposed usages without pavement - even Food Truck pop ups. It is much more flexible as green space - which would allow things like tents, temporary structures, even camping. Do not hard-top this space!	Temporary/Rotating Installation, Functional Art	Family Friendly, Natural, Casual, Accessible, Dynamic, Historic, Inviting, Beautiful	We have the chance to do something other than "vehicle accessible" here. We could hold fairs, gatherings, musters, concerts, pop-up creative stuff, rallies, exhibits, whatever - but we can't do that on a baking-hot asphalt slab meant for parking. We "can" do that with a flexible green space - and we should. The former car dealership property has the potential to be a lush community gathering space, but it won't be if we pave the crap out of it and make it motor-friendly.	Yes	20+ years	65+	Yes	tim@dl.org
Library and Mail drop boxes	Play Area	Rarely	By Car, But I Don't Park in the Lot	Nothing	Permeable Pavers	Pop-up Commercial Space (Small Business, Farmer's Market, etc.)	Sculpture or Furniture made from reused Patterson Playscape materials, Playful	Family Friendly, Natural, Functional	No	Yes	0-5 years	41-65	No	
Library and Mail drop boxes	More Outdoor Seating, Landscaping, Trees, Gardens, etc., Art	Weekly	On Foot	Better layout of driving lanes and parking	Bioswales, Colorful Painted Asphalt	Flexible Outdoor Gathering Space, Food Truck Pop-up Space	Temporary/Rotating Installation, Functional Art, Playful	Family Friendly, Natural, Dynamic, Inviting	Love the food truck idea!	Yes	11-20 years	41-65	Depends on time commitment	Twolschl@gmail.com
Open Green Space, Library and Mail drop boxes, Outdoor Seating Area Near the Library, Bike Repair Station	More Outdoor Seating, Event Space, Landscaping, Trees, Gardens, etc., Play Area, Improved Parking, Art	Rarely	By Car, Parking in the Lot	More protection and better access for cyclists and pedestrians off of Jefferson.	Mixed Pavement and Vegetation, Bioswales	Flexible Outdoor Gathering Space, Food Truck Pop-up Space	Sculpture or Furniture made from reused Patterson Playscape materials, Functional Art, Playful	Accessible, Beautiful, Functional	Great opportunity, let's nail it!	Yes	6-10 years	26-40	Yes	
Open Green Space, Library and Mail drop boxes	More Outdoor Seating, Landscaping, Trees, Gardens, etc., Play Area	Monthly	By Car, Parking in the Lot	Have a destination like a park	Mixed Pavement and Vegetation, Bioswales, Neutral Painted Asphalt, Colorful Painted Asphalt, Permeable Pavers	Flexible Outdoor Gathering Space, Food Truck Pop-up Space, Pop-up Commercial Space (Small Business, Farmer's Market, etc.)	Temporary/Rotating Installation, Functional Art, Playful	Family Friendly, Fresh, Inviting, Beautiful, Functional	X	Yes	20+ years	41-65	Yes	Ksspondike@comcast.net
Library and Mail drop boxes	Landscaping, Trees, Gardens, etc., Play Area	Rarely	On Foot	I don't even know what the civic center is	Bioswales, Electric vehicle charging spaces	Food Truck Pop-up Space, Pop-up Commercial Space (Small Business, Farmer's Market, etc.)	Place Specific Art	Family Friendly	Nope	Yes	0-5 years	26-40	No	
Library and Mail drop boxes, Outdoor Seating Area Near the Library, Bike Repair Station	More Outdoor Seating, Landscaping, Trees, Gardens, etc.	Monthly	By Car, Parking in the Lot	Na	Bioswales, Colorful Painted Asphalt	Flexible Outdoor Gathering Space	Place Specific Art	Historic, Beautiful, Traditional	Na	Yes	20+ years	41-65	No	
There is not much to like. The whole area is very sleepy and poorly maintained.	Anything that is maintained with exceptional quality	Rarely	By Bike	Better, maintained sidewalks, signage, and parking lot	Given the track record of maintaining parking lots all of these options look like they will require a lot of maintenance. Please don't do anything without the commitment to maintain it.	Flexible Outdoor Gathering Space	Functional Art	Accessible, Beautiful, Traditional	Please, please, please do not install another parking lot for the art center until the art center is constructed and ready to open.	Yes	11-20 years	41-65	Yes	Aschladden@aol.com
Open Green Space	Landscaping, Trees, Gardens, etc.	Monthly	By Car, Parking in the Lot	Improving the quality/layout of the parking lot, but not necessarily expanding it.	These are all ugly.	We have a downtown - these would be a better fit for that. Let government be government.	Place Specific Art	Natural, Historic, Family Friendly, Casual, Functional	Green space!!	Yes	6-10 years	26-40	Yes	ksm283@gmail.com
Library and Mail drop boxes	Landscaping, Trees, Gardens, etc.	Weekly	On Foot	Places to walk and sit outside	Bioswales	Flexible Outdoor Gathering Space	Functional Art	Natural, Inviting, Functional	Dog water station	Yes	11-20 years	41-65	No	
Open Green Space	Landscaping, Trees, Gardens, etc.	Weekly	On Foot	I care most about keeping green space - a rain garden for future climate issues especially.	Permeable Pavers	Flexible Outdoor Gathering Space	Functional Art	Natural, Inviting, Functional	There is plenty of parking already. Keep green space and add rain gardens.	Yes	20+ years	41-65	No	
Open Green Space	More Outdoor Seating, Play Area	Multiple times each week	By Car, Parking in the Lot	parking structure in the back but keeping the green space. Playground. Trees.	structure to minimize parking footprint	Flexible Outdoor Gathering Space	Functional Art	Family Friendly, Accessible, Inviting	there is precious little green space in GPP. Please do not cover this one with parking.	Yes	6-10 years	41-65	No	
Open Green Space	Landscaping, Trees, Gardens, etc., Improved Parking	Monthly	By Car, Parking in the Lot	Parking	Mixed Pavement and Vegetation	Flexible Outdoor Gathering Space	Sculpture or Furniture made from reused Patterson Playscape materials	Accessible, Beautiful, Functional		Yes	0-5 years	26-40	No	

What is your favorite thing(s) about the Civic Campus now?	What would you be most excited to see included in a new Civic Campus?	How often do you go to the Civic Center?	How do you usually travel to the Civic Center?	What do you think could improve your experience moving around the Civic Center?	PARKING: The redesign of the Civic Center will need to include additional parking, but that doesn't have to mean an empty asphalt lot! Which of the following images do you find most appealing?	EVENTS: The Civic Center can support space for pop-ups and special events. Which of these images do you find most appealing?	ART: Public art could be integrated into the site design to serve as both decoration and functional use. Which of these images do you find most appealing?	What words describe how you'd like the new Civic Center to feel? (Select 3)	Is there anything else you'd like us to know about what you'd like to see included in the new Civic Center Campus?	Are you a current resident of Grosse Pointe Park?	How long have you lived in Grosse Pointe Park?	What is your age?	Would you be interested in engaging further on this project?	If you responded yes to the question above, please share your best email address.
Library and Mail drop boxes, Outdoor Seating Area Near the Library, Bike Repair Station	More Outdoor Seating, Play Area	Weekly	On Foot	I live well within walking distance so I, personally, don't have any suggestions for this question.	Bioswales, Colorful Painted Asphalt	Flexible Outdoor Gathering Space, Food Truck Pop-up Space	Functional Art, Playful	Family Friendly, Casual, Accessible, Inviting, Beautiful, Functional	No	Yes	20+ years	41-65	Yes	paulapeggy24@gmail.com
Open Green Space	A respect for the historical designation by the city of Detroit	Monthly	On Foot		Permeable Pavers	Flexible Outdoor Gathering Space	Playful	Historic, Functional, Traditional		Yes	0-5 years	26-40	No	
Library and Mail drop boxes, Outdoor Seating Area Near the Library	More Outdoor Seating, Landscaping, Trees, Gardens, etc., Improved Parking	Multiple times each week	By Car, Parking in the Lot	Better signage, repair of lot	Bioswales, Permeable Pavers	Flexible Outdoor Gathering Space	Temporary/Rotating Installation, Sculpture or Furniture made from reused Patterson Playscape materials, Playful	Natural, Accessible, Beautiful	This is a great opportunity to create a welcoming outdoor space for all in our community, residents and visitors alike. The tot lot in the Village is really popular because it is centrally located and doesn't have residency restrictions. I hope GPP will create a similar experience in this space. I hope bathrooms are taken into consideration as well. That is something missing from the Tot Lot that is problematic.	Yes	6-10 years	41-65	Yes	jkeyser@grossepointelibrary.org
Open Green Space, Library and Mail drop boxes	Landscaping, Trees, Gardens, etc., Play Area, dry dog park	Monthly	By Car, Parking in the Lot	better maintenance	Bioswales, Permeable Pavers	this is not the location for pop ups. it will not support walkability.	dog art at a dog park	Family Friendly, Natural, Beautiful	There is no need to take this green space. The parking is plentiful for the civic and library.	Yes	20+ years	41-65	No	
Library and Mail drop boxes, Outdoor Seating Area Near the Library	Landscaping, Trees, Gardens, etc., Improved Parking	Weekly	By Car, Parking in the Lot	Repave road/parking lot	Neutral Painted Asphalt	Food Truck Pop-up Space, Pop-up Commercial Space (Small Business, Farmer's Market, etc.)	Place Specific Art	Historic, Traditional	No	Yes	20+ years	65+	No	
Open Green Space	Landscaping, Trees, Gardens, etc., Play Area	Monthly	By Bike	More bike appropriate space	Bioswales	Flexible Outdoor Gathering Space	Playful	Family Friendly, Natural, Accessible	no	Yes	6-10 years	26-40	Yes	emhaberkorn@gmail.com
Outdoor Seating Area Near the Library	Landscaping, Trees, Gardens, etc.	Weekly	By Car, Parking in the Lot	If it looked prettier and had better pavement	Bioswales	Flexible Outdoor Gathering Space	Functional Art	Casual, Inviting, Beautiful	No	No		41-65	No	
Library and Mail drop boxes, Bike Repair Station	More Outdoor Seating, Landscaping, Trees, Gardens, etc., Play Area	Weekly	By Car, Parking in the Lot	Making the green space more welcoming. Better parking lot.	Mixed Pavement and Vegetation, Colorful Painted Asphalt	Flexible Outdoor Gathering Space	Functional Art	Family Friendly, Casual, Accessible, Fresh, Inviting, Beautiful	I'd love to see it functional and beautiful	Yes	20+ years	41-65	No	Beccaozar@gmail.com
Open Green Space	More Outdoor Seating, Landscaping, Trees, Gardens, etc.	Monthly	By Car, Parking in the Lot	The Greenspace in front of the library could be utilized better and made more aesthetic. Perhaps some outdoor exercise equipment, a small stage or raised pavilion for local choir or band concerts, playground equipment etc.	Mixed Pavement and Vegetation	Flexible Outdoor Gathering Space, Food Truck Pop-up Space, Pop-up Commercial Space (Small Business, Farmer's Market, etc.)	Playful	Family Friendly, Accessible, Functional	No	Yes	6-10 years	41-65	No	
Open Green Space, Outdoor Seating Area Near the Library	Landscaping, Trees, Gardens, etc., Play Area, Would be a much better space for dog park	Weekly	On Foot	There is no sidewalk from Jefferson to city hall or library. You have to walk in driveway which is unsafe. Paving is atrocious and dangerous.	Permeable Pavers. This site is the epicenter of flooding issues. Adding more paved areas without a design to manage water is asking for more problems. The asphalt should be replaced with permeable pavers. Limit the amount of new pavement.	Flexible Outdoor Gathering Space, Pop-up Commercial Space (Small Business, Farmer's Market, etc.), Outdoor library space would be a wonderful addition for story time and library events.	Playful	Family Friendly, Natural, Accessible, Inviting	1. Walkway from Jefferson to city hall and library without walking in driveway. 2. Very limited addition of parking and paved areas. Permeable surfaces to prevent more flooding issues. 3. Space in front of city hall on Jefferson needs much better design and landscaping than overgrown bushes. 4. Common gathering spaces for events near library. 5. Play areas would be wonderful addition. 6. Move dog park from patterson. Better supervision, centrally located and not swampy. 7. Please do NOT simply make a giant parking lot!	Yes	20+ years	41-65	Please hold public engagement sessions	
Open Green Space, Outdoor Seating Area Near the Library, Bike Repair Station	More Outdoor Seating, Event Space, Landscaping, Trees, Gardens, etc., Play Area, Art	Multiple times each week	On Foot	Do not put a parking lot in this area	Bioswales	Built In Stage (Eastpointe City Hall)	Temporary/Rotating Installation, Functional Art, Playful	Family Friendly, Inviting, Functional	I would like this to not be a parking lot	Yes	20+ years	41-65	Yes	
Library and Mail drop boxes	More Outdoor Seating, Landscaping, Trees, Gardens, etc., Improved Parking	Weekly	On Foot	Entrance area to alley Nasty	Mixed Pavement and Vegetation	Flexible Outdoor Gathering Space	Functional Art	Casual, Historic, Inviting, Beautiful, Traditional	A distinct visual separation from detroit	Yes	20+ years	65+	No	
Open Green Space, Outdoor Seating Area Near the Library	Landscaping, Trees, Gardens, etc., Play Area	Weekly	By Car, Parking in the Lot	A little wider in/out lanes	Mixed Pavement and Vegetation, Colorful Painted Asphalt	Flexible Outdoor Gathering Space, Pop-up Commercial Space (Small Business, Farmer's Market, etc.)	Sculpture or Furniture made from reused Patterson Playscape materials, Playful	Family Friendly, Accessible, Inviting	N/A	Yes	11-20 years	41-65	No	

What is your favorite thing(s) about the Civic Campus now?	What would you be most excited to see included in a new Civic Campus?	How often do you go to the Civic Center?	How do you usually travel to the Civic Center?	What do you think could improve your experience moving around the Civic Center?	PARKING: The redesign of the Civic Center will need to include additional parking, but that doesn't have to mean an empty asphalt lot. Which of the following images do you find most appealing?	EVENTS: The Civic Center can support space for pop-ups and special events. Which of these images do you find most appealing?	ART: Public art could be integrated into the site design to serve as both decoration and functional use. Which of these images do you find most appealing?	What words describe how you'd like the new Civic Center to feel? (Select 3)	Is there anything else you'd like us to know about what you'd like to see included in the new Civic Center Campus?	Are you a current resident of Grosse Pointe Park?	How long have you lived in Grosse Pointe Park?	What is your age?	Would you be interested in engaging further on this project?	If you responded yes to the question above, please share your best email address.
Library and Mail drop boxes	Landscaping, Trees, Gardens, etc., Improved Parking	Monthly	By Car, Parking in the Lot	More parking	Bioswales, Permeable Pavers	Built In Stage (Eastpointe City Hall), Pop-up Commercial Space (Small Business, Farmer's Market, etc.)	Place Specific Art, Functional Art	Historic, Beautiful, Functional	na	Yes	6-10 years	41-65	Yes	acaj_johnson@sbcglobal.net
Open Green Space, Library and Mail drop boxes, Outdoor Seating Area Near the Library	Landscaping, Trees, Gardens, etc.	Multiple times each week	50/50 walk dog/drive	With this being one of the few green spaces in our city, I'd like to keep it that way w/additional landscaping	Bioswales	Flexible Outdoor Gathering Space	Functional Art	Natural, Beautiful, Functional	Keep it green w/lovely landscaping	Yes	20+ years	65+	Yes	Viragoonline@yahoo.com
Open Green Space	Landscaping, Trees, Gardens, etc., Play Area	Monthly	By Car, But I Don't Park in the Lot	NA	Bioswales, Permeable Pavers	Flexible Outdoor Gathering Space	Sculpture or Furniture made from reused Patterson Playscape materials, Functional Art	Family Friendly, Natural	No	Yes	0-5 years	26-40	Yes	Rachpack@gmail.com
Open Green Space, Outdoor Seating Area Near the Library	More Outdoor Seating, Landscaping, Trees, Gardens, etc., Play Area	Weekly	By Bike	An inviting space to spend time after a library visit. Gardens that have year round interest. Natural playscape area for kids.	Bioswales, Colorful Painted Asphalt, Permeable Pavers. The whole town is very swampy, please be very considerate about designing the area using native plants.	Flexible Outdoor Gathering Space, Food Truck Pop-up Space	Functional Art, Playful	Family Friendly, Natural, Accessible, Inviting	We love having the outdoor space for the library for programming such as storytime, 1000 hours outside, yoga and crafts. It's a place to spend time after a library visit.	Yes	6-10 years	26-40	Yes	Vtmanderz@gmail.com
Open Green Space	Play Area	Weekly	On Foot	The layout of the lot isn't great, and there shouldn't be meters at the library even if no one pays them. It would be great to have library parking that's close to the building and a playscape. Trees along Jefferson would beautify the space and add some privacy and noise buffer from the traffic.	Mixed Pavement and Vegetation, Permeable Pavers	Flexible Outdoor Gathering Space	Sculpture or Furniture made from reused Patterson Playscape materials, Playful	Family Friendly, Natural, Accessible	Drive thru drop off boxes should stay somewhere if possible!	Yes	20+ years	26-40	Yes	Amandamvanover@gmail.com
Open Green Space	Improved Parking, Art, Parking so no more houses are torn down	Rarely	By Car, But I Don't Park in the Lot	Multi purpose. Music, picnic space, swings, art, parking	Mixed Pavement and Vegetation, Colorful Painted Asphalt	Flexible Outdoor Gathering Space, Food Truck Pop-up Space	Temporary/Rotating Installation, Playful	Family Friendly, Fresh, Inviting, Functional	Multi purpose	Yes	20+ years	65+	Yes	sajabarnes@gmail.com
Open Green Space	Landscaping, Trees, Gardens, etc.	Weekly	All methods	The lot is in rough shape	Permeable Pavers	Flexible Outdoor Gathering Space, Built In Stage (Eastpointe City Hall)	Functional Art, Playful	Family Friendly, Natural, Inviting	?	Yes	20+ years	41-65	No	
Library and Mail drop boxes, Outdoor Seating Area Near the Library	More Outdoor Seating, Event Space, Landscaping, Trees, Gardens, etc.	Weekly	Both by car and on foot	Better landscaping and more options to sit out front would be so cool	Colorful Painted Asphalt, Permeable Pavers	Flexible Outdoor Gathering Space	Functional Art	Casual, Functional	I don't usually use the parks because it's not close enough for me to walk and they're crowded. I walk to the library once a week in the summer, an outdoor space would be awesome	Yes	11-20 years	41-65	Yes	susan.rose.reinke@gmail.com
Open Green Space	More Outdoor Seating, Landscaping, Trees, Gardens, etc.	Weekly	On Foot	More seating	Bioswales	Flexible Outdoor Gathering Space	Functional Art	Accessible, Functional	No	Yes	6-10 years	65+	No	
Open Green Space, Library and Mail drop boxes	More Outdoor Seating, Landscaping, Trees, Gardens, etc., Play Area, Interactive learning garden for students and integrated play/activity items to reinforce	Rarely	On Foot	GPP famous walking safely through the points... walking trails within garden learning-field trip friendly for local elementary schools	Bioswales, Permeable Pavers	Flexible Outdoor Gathering Space	Sculpture or Furniture made from reused Patterson Playscape materials, Functional Art, Playful, Education zones for field trips for local schools, ie butterfly/seeding zone/structure descriptive word interactive/educational/stimulating	Family Friendly, Natural, Beautiful, Functional	GPP used to have more of this when I grew up. Education zones for field trips for local schools. ie butterfly/seeding zone/structure Descriptive word: interactive/educational/stimulating	Yes	20+ years	41-65	Yes	Katnthehat@gmail.com
Outdoor Seating Area Near the Library, Bike Repair Station	Event Space, Improved Parking	Monthly	By Car, Parking in the Lot	Better traffic flow for cars	Mixed Pavement and Vegetation, Permeable Pavers	Pop-up Commercial Space (Small Business, Farmer's Market, etc.)	Sculpture or Furniture made from reused Patterson Playscape materials	Family Friendly, Accessible, Historic, Functional	Nope	Yes	20+ years	41-65	No	
Library and Mail drop boxes, Outdoor Seating Area Near the Library, Bike Repair Station	Event Space, Landscaping, Trees, Gardens, etc., Improved Parking	Monthly	By Car, Parking in the Lot	Better traffic flow and parking	Mixed Pavement and Vegetation, Permeable Pavers	Temporary/Mobile Stage and Seating, Pop-up Commercial Space (Small Business, Farmer's Market, etc.)	Place Specific Art, Sculpture or Furniture made from reused Patterson Playscape materials	Accessible, Historic, Inviting	None	Yes	20+ years	26-40	No	
Library and Mail drop boxes, Outdoor Seating Area Near the Library, Bike Repair Station	Event Space, Improved Parking	Monthly	By Car, Parking in the Lot	Traffic flow and parking. It currently feels like a space waiting to be activated. If it were more visually interesting and had more outdoor seating, it would feel like a destination.	Mixed Pavement and Vegetation	Pop-up Commercial Space (Small Business, Farmer's Market, etc.)	Temporary/Rotating Installation, Playful	Casual, Accessible, Historic	Just fix the existing. This is NOT a park - needs to be a campus for city hall.	Yes	20+ years	41-65	No	
Open Green Space	More Outdoor Seating, Landscaping, Trees, Gardens, etc., Art	Monthly	By Car, Parking in the Lot		Bioswales	Flexible Outdoor Gathering Space, Built In Stage (Eastpointe City Hall)	Temporary/Rotating Installation, Sculpture or Furniture made from reused Patterson Playscape materials, Functional Art, Playful	Accessible, Dynamic, Fresh, Inviting, Functional	I'd like a variety of features so it appeals and would be used by people of all ages.	Yes	20+ years	65+	Yes	Dk.nwuu@gmail.com
Library and Mail drop boxes, Outdoor Seating Area Near the Library, Bike Repair Station	Improved Parking	Monthly	By Car, Parking in the Lot	Better layout of parking lot	Mixed Pavement and Vegetation, Permeable Pavers	Food Truck Pop-up Space, Pop-up Commercial Space (Small Business, Farmer's Market, etc.)	Sculpture or Furniture made from reused Patterson Playscape materials	Accessible, Historic	Civic campus with business design	Yes	20+ years	65+	No	

What is your favorite thing(s) about the Civic Campus now?	What would you be most excited to see included in a new Civic Campus?	How often do you go to the Civic Center?	How do you usually travel to the Civic Center?	What do you think could improve your experience moving around the Civic Center?	PARKING: The redesign of the Civic Center will need to include additional parking, but that doesn't have to mean an empty asphalt lot! Which of the following images do you find most appealing?	EVENTS: The Civic Center can support space for pop-ups and special events. Which of these images do you find most appealing?	ART: Public art could be integrated into the site design to serve as both decoration and functional use. Which of these images do you find most appealing?	What words describe how you'd like the new Civic Center to feel? (Select 3)	Is there anything else you'd like us to know about what you'd like to see included in the new Civic Center Campus?	Are you a current resident of Grosse Pointe Park?	How long have you lived in Grosse Pointe Park?	What is your age?	Would you be interested in engaging further on this project?	If you responded yes to the question above, please share your best email address.
Open Green Space, Outdoor Seating Area Near the Library, That there is not a parking lot right along Jefferson Ave	More Outdoor Seating, Event Space, Landscaping, Trees, Gardens, etc., Play Area, Improved Parking, Art	Monthly	Either By Car (parking in the lot) or On Foot	The Civic Center is primarily designed for cars right now, and it needs to be designed much more for pedestrians. A holistic approach to parking for the entire area (including for the future Schaap Center) should be developed in a way that puts that parking behind more pedestrian friendly buildings and public spaces that face Alter, Jefferson, Maryland and Lakepointe. We are an urban area, and should embrace that.	Bioswales, Colorful Painted Asphalt, Permeable Pavers	Flexible Outdoor Gathering Space, Pop-up Commercial Space (Small Business, Farmer's Market, etc.)	Temporary/Rotating Installation, Functional Art, Playful	Accessible, Dynamic, Inviting	If our City is going to be relevant in the Detroit Region in the 21st Century, it is imperative that we embrace our close physical connection to Detroit. Our current Civic Center Campus and the area around it turns its back toward Detroit, and is largely unfriendly to pedestrians. We need to be thinking holistically about this area as an opportunity to welcome and ease the transition between Detroit and GPP. These efforts should include a much improved attitude about the Jefferson Ave streetscape - as just one of many examples, there are no adequate pedestrian crossings on Jefferson between Alter and Somerset. That's almost half of a mile (or nearly a 10-minute walk) to safely cross Jefferson. One could point out crossings at both Maryland and Beaconsfield, but neither of them are safe or particularly accessible.	Yes	6-10 years	41-65	Yes	graigdonnelly@yahoo.com
Outdoor Seating Area Near the Library	More Outdoor Seating, Landscaping, Trees, Gardens, etc.	Weekly	On Foot	it would be nice to have seating and a green community space	Bioswales, Permeable Pavers	Flexible Outdoor Gathering Space, Built In Stage (Eastpointe City Hall)	Sculpture or Furniture made from reused Patterson Playscape materials, Functional Art, Playful	Casual, Inviting, Beautiful	A place to lock up bikes, make it functional art please	Yes	6-10 years	41-65	Yes	jamesceuninck@yahoo.com
Library and Mail drop boxes, Bike Repair Station	More Outdoor Seating, Event Space, Art	Weekly	By Car, Parking in the Lot	More seating outside with gardens	Bioswales, Colorful Painted Asphalt	Flexible Outdoor Gathering Space, Pop-up Commercial Space (Small Business, Farmer's Market, etc.)	Temporary/Rotating Installation, Playful	Family Friendly, Dynamic, Inviting, Beautiful	A space that is comfortable, inviting and can use for events	Yes	11-20 years	41-65	No	
Open Green Space, Library and Mail drop boxes	Landscaping, Trees, Gardens, etc., Play Area	Weekly	By Car, But I Don't Park in the Lot	New surfacing to the drive & parking lot	Mixed Pavement and Vegetation	Flexible Outdoor Gathering Space, Pop-up Commercial Space (Small Business, Farmer's Market, etc.)	Functional Art, Playful	Family Friendly, Inviting, Beautiful	Don't pave over the area in front of the library!	Yes	20+ years	65+	Yes	Carolbrowdoran@aol.com
Open Green Space	Landscaping, Trees, Gardens, etc.	Rarely	By Car, Parking in the Lot	I think it's fine	Bioswales	Built In Stage (Eastpointe City Hall), Food Truck Pop-up Space, Pop-up Commercial Space (Small Business, Farmer's Market, etc.)	Sculpture or Furniture made from reused Patterson Playscape materials, Playful	Family Friendly, Natural, Accessible, Beautiful	No	Yes	6-10 years	26-40	Yes	koakes918@gmail.com
Open Green Space, Library and Mail drop boxes, Outdoor Seating Area Near the Library, Bike Repair Station	Landscaping, Trees, Gardens, etc., Skate park	Weekly	On Foot	Open green spaces with trees and landscaping are great for everyone. An added bonus would be a green space with gardens for walking, include a skate park.	Bioswales	Flexible Outdoor Gathering Space, Built In Stage (Eastpointe City Hall), Pop-up Commercial Space (Small Business, Farmer's Market, etc.)	Temporary/Rotating Installation, Sculpture or Furniture made from reused Patterson Playscape materials	Family Friendly, Casual, Accessible, Fresh, Inviting, Functional	Thanks for creating this survey. It is difficult for us to attend council meetings with our work schedules.	Yes	11-20 years	41-65	No	
Library and Mail drop boxes	Event Space, Landscaping, Trees, Gardens, etc.	Rarely	By Car, Parking in the Lot	Trees!	Bioswales	Temporary/Mobile Stage and Seating	Place Specific Art	Natural, Fresh, Beautiful	An amphitheater would be a great addition, but the space definitely needs some mature trees.	Yes	11-20 years	41-65	Yes	Andrewgharr@gmail.com
Open Green Space	Landscaping, Trees, Gardens, etc.	Weekly	On Foot	A walking path over the lawn	Bioswales	Temporary/Mobile Stage and Seating	Place Specific Art	Natural, Inviting, Beautiful	Save as much green space as possible	Yes	20+ years	41-65	Yes	Henninkm@udmercy.edu
Open Green Space, Library and Mail drop boxes	More Outdoor Seating, Landscaping, Trees, Gardens, etc.	Weekly	By Car, Parking in the Lot	Benches to read at. Coffee sales!	Bioswales, Permeable Pavers	Flexible Outdoor Gathering Space, Pop-up Commercial Space (Small Business, Farmer's Market, etc.)	Temporary/Rotating Installation, Sculpture or Furniture made from reused Patterson Playscape materials, Functional Art	Family Friendly, Natural, Accessible, Historic	Has anyone taken a residence poll to see if we, in the neighborhood, are actually interested in going to the GP theatre's performances during the 26 weekends that they plan for?	Yes	11-20 years	41-65	Yes	Dmbeleshi@gmail.com
Open Green Space, Outdoor Seating Area Near the Library	More Outdoor Seating, Event Space, Landscaping, Trees, Gardens, etc., Play Area, Art	Rarely	By Car, Parking in the Lot	A cohesive, user-friendly layout that includes a lot of nature that can be enjoyed by people of all ages and abilities (ie disability friendly)	Bioswales, Colorful Painted Asphalt	Flexible Outdoor Gathering Space, Built In Stage (Eastpointe City Hall), Pop-up Commercial Space (Small Business, Farmer's Market, etc.)	Temporary/Rotating Installation, Playful	Accessible, Dynamic, Inviting	Again - accessible, accessible, accessible - for all senses and abilities	Yes	20+ years	41-65	Yes	garchinal@gmail.com
Library and Mail drop boxes	Landscaping, Trees, Gardens, etc., Improved Parking, Art	Monthly	By Car, Parking in the Lot	Better parking, repaving of lot	Mixed Pavement and Vegetation, Bioswales	Flexible Outdoor Gathering Space, Temporary/Mobile Stage and Seating, Pop-up Commercial Space (Small Business, Farmer's Market, etc.)	Place Specific Art, Sculpture or Furniture made from reused Patterson Playscape materials, Functional Art	Family Friendly, Accessible, Dynamic, Inviting, Functional	Not that I can think of right now.	Yes	0-5 years	41-65	Yes	chiefbrogie@me.com

What is your favorite thing(s) about the Civic Campus now?	What would you be most excited to see included in a new Civic Campus?	How often do you go to the Civic Center?	How do you usually travel to the Civic Center?	What do you think could improve your experience moving around the Civic Center?	PARKING: The redesign of the Civic Center will need to include additional parking, but that doesn't have to mean an empty asphalt lot! Which of the following images do you find most appealing?	EVENTS: The Civic Center can support space for pop-ups and special events. Which of these images do you find most appealing?	ART: Public art could be integrated into the site design to serve as both decoration and functional use. Which of these images do you find most appealing?	What words describe how you'd like the new Civic Center to feel? (Select 3)	Is there anything else you'd like us to know about what you'd like to see included in the new Civic Center Campus?	Are you a current resident of Grosse Pointe Park?	How long have you lived in Grosse Pointe Park?	What is your age?	Would you be interested in engaging further on this project?	If you responded yes to the question above, please share your best email address.
Library and Mail drop boxes	Improved Parking, Sidewalk approach to the buildings	Weekly	By foot, bike and car (parking in the lot).	The driveway on Maryland is concerning. Can it be widened?	Bioswales	Flexible Outdoor Gathering Space	Temporary/Rotating Installation	Family Friendly, Natural, Accessible	Shaded or covered seating	Yes	11-20 years	41-65	No	
Library and Mail drop boxes	Event Space, Landscaping, Trees, Gardens, etc.	Monthly	By Bike	?	Colorful Painted Asphalt	Food Truck Pop-up Space, Pop-up Commercial Space (Small Business, Farmer's Market, etc.)	Temporary/Rotating Installation	Family Friendly, Natural, Fresh, Beautiful, Functional	?	Yes	20+ years	26-40	Yes	rachaelegoulet@gmail.com
Open Green Space, Library and Mail drop boxes, Outdoor Seating Area Near the Library	More Outdoor Seating, Landscaping, Trees, Gardens, etc., Play Area, Improved Parking, Art	Monthly	By Car, Parking in the Lot	More of a reason to stay, a better space with shade and gardens for reading.	Bioswales, Permeable Pavers	Food Truck Pop-up Space	Temporary/Rotating Installation, Place Specific Art, Sculpture or Furniture made from reused Patterson Playscape materials, Functional Art, Playful	Family Friendly, Casual, Inviting	No	Yes	0-5 years	41-65	No	
Library and Mail drop boxes	Improved Parking	Monthly	By Car, Parking in the Lot	More parking	Neutral Painted Asphalt	Pop-up Commercial Space (Small Business, Farmer's Market, etc.)	Temporary/Rotating Installation	Family Friendly, Traditional	Don't spend too much money on this.	Yes	20+ years	26-40	No	
Outdoor Seating Area Near the Library	More Outdoor Seating, Landscaping, Trees, Gardens, etc., Play Area, Art	Few times a year	On Foot	Time	Bioswales	Flexible Outdoor Gathering Space	Temporary/Rotating Installation, Place Specific Art, Functional Art, Playful	Family Friendly, Natural, Accessible, Inviting, Beautiful, Functional, Traditional	No	Yes	20+ years	41-65	No	
Open Green Space, Library and Mail drop boxes, Outdoor Seating Area Near the Library	More Outdoor Seating, Event Space, Landscaping, Trees, Gardens, etc.	Monthly	By Car, Parking in the Lot	N/A	Mixed Pavement and Vegetation, Bioswales	Flexible Outdoor Gathering Space	Temporary/Rotating Installation, Functional Art	Family Friendly, Natural, Beautiful, Functional	I DO NOT want to see green space eliminated or reduced in lieu of more parking	Yes	11-20 years	41-65	possibly depending on the needed commitment	velascop958@yahoo.com
Open Green Space, Library and Mail drop boxes, Outdoor Seating Area Near the Library	More Outdoor Seating, Event Space, Landscaping, Trees, Gardens, etc. I have so many ideas for this space and will send additional emails! Thank you so very much for sending this to us!	Multiple times each week	On Foot	Paved sidewalks in a pattern that I will send a picture of. Last year I presented a number of ideas and illustrations at various City Hall meetings, which I will submit to you.	As few spaces as possible, on the edge closest to City Hall, and hidden behind greenery	A beautiful gazebo in the center of the Ewald green space, that could be a permanent centerpiece for many types of events. It would look gorgeous all year round and could be seen from a distance. It could be a place people would want to take important photos, such as for a wedding etc. A gazebo could be the home of the official GPP Christmas tree, and be the focal point for a tree lighting. Lighting permanently attached to a gazebo would make it so attractive all year long. Benches and trees/plantings would be lovely. The point is to make a welcoming space, and a beautiful sight when arriving in GPP. And no no no to excessive parking. No parking are pretty. I think a permanent quality structure	Not sure if my previous response was lost, so will write a separate email	Family Friendly, Accessible, Historic, Inviting, Beautiful, Functional, Traditional	Will send separate emails	Yes	20+ years	65+	Yes	suzymazur@hotmail.com
Library and Mail drop boxes	Landscaping, Trees, Gardens, etc.	Monthly	Both on foot and by car	Consider gardens or area to keep green space in place but incorporate park like area to enjoy outside library	Bioswales	Flexible Outdoor Gathering Space, Pop-up Commercial Space (Small Business, Farmer's Market, etc.)	Playful	Family Friendly, Casual, Inviting	Continued focus on family friendly areas to encourage inclusive community events of all kinds	Yes	6-10 years	41-65	No	
Open Green Space, Library and Mail drop boxes, Outdoor Seating Area Near the Library	Event Space, Landscaping, Trees, Gardens, etc., No parking on space in front of library	Multiple times each week	On Foot	Resurface existing parking lot. No new parking lot.	No new parking lot	Flexible Outdoor Gathering Space, Keep the open space as is so children can run, play without adult supervision, kick their ball, be spontaneous.	Leave alone	Family Friendly, Natural, Accessible	No new parking lot	Yes	20+ years	65+	Yes	adnan.dajani@wayne.edu
Open Green Space, Outdoor Seating Area Near the Library	More Outdoor Seating, Landscaping, Trees, Gardens, etc.	Weekly	By car or bike	If the current lot between the library and city hall was repaired.	Bioswales, Permeable Pavers	Flexible Outdoor Gathering Space, Pop-up Commercial Space (Small Business, Farmer's Market, etc.)	Functional Art, Playful	Natural, Accessible, Functional	I would really like to see the garden by the library stay, and for the overall plan to include as much green space as possible. Implementing features such as rain gardens and permeable lots can help solve flooding and water pollution issues. Rain gardens also create crucial habitat for declining pollinator populations. In addition, they become learning spaces and opportunities for people of all ages to connect with nature and get involved in citizen science projects by reporting their observations.	Yes	11-20 years	41-65	Yes	momcatkelly@yahoo.com

What is your favorite thing(s) about the Civic Campus now?	What would you be most excited to see included in a new Civic Campus?	How often do you go to the Civic Center?	How do you usually travel to the Civic Center?	What do you think could improve your experience moving around the Civic Center?	PARKING: The redesign of the Civic Center will need to include additional parking, but that doesn't have to mean an empty asphalt lot! Which of the following images do you find most appealing?	EVENTS: The Civic Center can support space for pop-ups and special events. Which of these images do you find most appealing?	ART: Public art could be integrated into the site design to serve as both decoration and functional use. Which of these images do you find most appealing?	What words describe how you'd like the new Civic Center to feel? (Select 3)	Is there anything else you'd like us to know about what you'd like to see included in the new Civic Center Campus?	Are you a current resident of Grosse Pointe Park?	How long have you lived in Grosse Pointe Park?	What is your age?	Would you be interested in engaging further on this project?	If you responded yes to the question above, please share your best email address.
Open Green Space, Library and Mail drop boxes, Outdoor Seating Area Near the Library	Landscaping, Trees, Gardens, etc., Improved Parking	Multiple times each week	By Car, Parking in the Lot	Keep the green space green, replace parking and maybe take out the grassy medians within the lot to make more room.	Bioswales	Flexible Outdoor Gathering Space	Sculpture or Furniture made from reused Patterson Playscape materials, Functional Art	Family Friendly, Natural, Accessible	Our family uses the field in front of the library a lot for a green space that's walkable from our home. It could be utilized more, with gardens, etc. Please don't pave it. It's so important to have a place that's open and kids are free to run around or adults are free to lounge. We've viewed solar eclipses, played tag, done tai chi and yoga, read stories, and done scavenger hunts there.	Yes	6-10 years	26-40	Yes	annie.e.spence@gmail.com
Open Green Space, Outdoor Seating Area Near the Library	Landscaping, Trees, Gardens, etc., Play Area	Multiple times each week	On Foot	Keeping green space and not allowing future parking lots to build up.	Bioswales	Flexible Outdoor Gathering Space	Sculpture or Furniture made from reused Patterson Playscape materials, Functional Art, Playful	Family Friendly, Natural, Beautiful	Keep as much open green space as possible	Yes	20+ years	41-65	Possibly	Sarahfboyd@gmail.com
Library and Mail drop boxes	Improved Parking	Weekly	By Car, Parking in the Lot	Better pavement	Bioswales	Food Truck Pop-up Space	Functional Art	Accessible, Beautiful, Traditional	Water retention and pollinator garden	Yes	11-20 years	41-65	Yes	Hrkib@hotmail.com
Library and Mail drop boxes	Improved Parking	Weekly	By Car, Parking in the Lot	Better asphalt	Bioswales	Flexible Outdoor Gathering Space	Functional Art	Inviting, Beautiful, Functional	I love the idea of additional green space for pollinators, water retention and runoff mitigation as well as the needed parking and roadway improvements.	Yes	11-20 years	41-65	No	
Open Green Space, Outdoor Seating Area Near the Library	More Outdoor Seating, Landscaping, Trees, Gardens, etc., Improved Parking	Multiple times each week	By Car, Parking in the Lot	Updated parking lot, at the back, improvement for the green space along Jefferson	Bioswales	Flexible Outdoor Gathering Space	Functional Art	Family Friendly, Natural, Accessible	I'd like a parking structure in the back, off of Maryland, and a refresh of the green space in front of the library to support events and use by people.	No		41-65	Yes	melissarizer@sbcglobal.net
Library and Mail drop boxes	Landscaping, Trees, Gardens, etc., Play Area	Weekly	On Foot	I usually walk through the parking lot from Maryland to access amenities. It would be nice to have clearer pedestrian paths.	Bioswales	Flexible Outdoor Gathering Space, Food Truck Pop-up Space	Functional Art	Family Friendly, Natural, Beautiful	I think a safe fenced play area is a natural fit next to our beautiful library and serves as a midway point between the two former school playgrounds. A "tot lot" like structure could bring added interest and business to the Jefferson corridor.	Yes	6-10 years	26-40	Yes	Liagreenwell@gmail.com
Library and Mail drop boxes, Outdoor Seating Area Near the Library	More Outdoor Seating, Event Space, Landscaping, Trees, Gardens, etc., Play Area, Art	Rarely	By Car, Parking in the Lot	Make the field user friendly	Bioswales, Colorful Painted Asphalt	Flexible Outdoor Gathering Space, Built in Stage (Eastpointe City Hall), Pop-up Commercial Space (Small Business, Farmer's Market, etc.)	Place Specific Art, Sculpture or Furniture made from reused Patterson Playscape materials, Functional Art, Playful	Family Friendly, Natural, Accessible, Fresh, Beautiful, Functional	No	No		41-65	No	
Open Green Space	Landscaping, Trees, Gardens, etc.	Multiple times each week	By Car, Parking in the Lot	Free parking		Flexible Outdoor Gathering Space	Temporary/Rotating Installation	Family Friendly, Natural, Beautiful	I would love to have as much natural landscaping as possible and encourage a space for residents to hang out.	No		41-65	Yes	Ejohnson@grossepointelibrary.org
Outdoor Seating Area Near the Library, We have a world-class library. Nothing about this campus plan should threaten the library's ability to serve the community. Rather this project should enhance the library services.	Event Space, Landscaping, Trees, Gardens, etc.	Multiple times each week	By Car, Parking in the Lot	Clear signage focused on what residents are there to do (not on the city department names that serve those functions)	Bioswales	Temporary/Mobile Stage and Seating	Playful	Natural, Inviting, Functional	The impacts of this redevelopment and stormwater runoff need to be a major priority. It will be easier to build and construct conventional infrastructure that creates a large amount of runoff. Please seek the expertise of organizations and consultants that deal with this on a daily basis, and at the regional level.	Yes	11-20 years	26-40	Yes	michaelandrewspence@gmail.com
Do not currently use the space	More Outdoor Seating, Landscaping, Trees, Gardens, etc.	Monthly	By Car, Parking in the Lot	More green space	Bioswales	Flexible Outdoor Gathering Space	None of these	Family Friendly, Natural	Na	Yes	6-10 years	26-40	Depends	
Library and Mail drop boxes, Outdoor Seating Area Near the Library, Bike Repair Station	More Outdoor Seating, Landscaping, Trees, Gardens, etc.	Multiple times each week	By Car, Parking in the Lot	gardens and walking paths	Bioswales, Colorful Painted Asphalt, Permeable Pavers, grassy parking lot	Flexible Outdoor Gathering Space	Functional Art, Playful	Family Friendly, Fresh, Inviting	I want it to feel welcoming, bright, inviting. Not too building nestled in a bunch of weeds.	No		41-65		It depends on the aspect to be discussed.
Open Green Space, Library and Mail drop boxes, Outdoor Seating Area Near the Library	Landscaping, Trees, Gardens, etc.	Multiple times each week	By Car, Parking in the Lot	Repair the existing parking lot, especially the one at the rear of the property	Bioswales	Flexible Outdoor Gathering Space	Temporary/Rotating Installation	Natural	No	Yes	20+ years	41-65	No	
Open Green Space, Library and Mail drop boxes	Landscaping, Trees, Gardens, etc., Play Area	Multiple times each week	On Foot	Open space	NONE	Flexible Outdoor Gathering Space, Food Truck Pop-up Space	NONE	Family Friendly, Natural, Inviting	NO PARKING	Yes	20+ years	65+	Yes	

What is your favorite thing(s) about the Civic Campus now?	What would you be most excited to see included in a new Civic Campus?	How often do you go to the Civic Center?	How do you usually travel to the Civic Center?	What do you think could improve your experience moving around the Civic Center?	PARKING: The redesign of the Civic Center will need to include additional parking, but that doesn't have to mean an empty asphalt lot! Which of the following images do you find most appealing?	EVENTS: The Civic Center can support space for pop-ups and special events. Which of these images do you find most appealing?	ART: Public art could be integrated into the site design to serve as both decoration and functional use. Which of these images do you find most appealing?	What words describe how you'd like the new Civic Center to feel? (Select 3)	Is there anything else you'd like us to know about what you'd like to see included in the new Civic Center Campus?	Are you a current resident of Grosse Pointe Park?	How long have you lived in Grosse Pointe Park?	What is your age?	Would you be interested in engaging further on this project?	If you responded yes to the question above, please share your best email address.
Open Green Space, Outdoor Seating Area Near the Library, the open green space lawn in front of the library	Landscaping, Trees, Gardens, etc., Play Area	Multiple times each week	By Bike	repaved parking lot	Mixed Pavement and Vegetation, Bioswales, Neutral Painted Asphalt	Food Truck Pop-up Space, Pop-up Commercial Space (Small Business, Farmer's Market, etc.)	Temporary/Rotating Installation, Functional Art	Family Friendly, Casual, Historic, Functional	more green for the local wildlife	Yes	6-10 years	41-65	Yes	czarlazar2gmail.com
Open Green Space, Library and Mail drop boxes, Outdoor Seating Area Near the Library, The open green space between the library and the streets	Landscaping, Trees, Gardens, etc., Play Area	Multiple times each week	On Foot	I like it the way it is.	none of the above	Flexible Outdoor Gathering Space	Temporary/Rotating Installation, Place Specific Art	Family Friendly, Natural, Inviting, Beautiful	It is important to me to keep the grassy area in front of the library, and not block the view of the library.	Yes	20+ years	41-65	No	
Open Green Space, Outdoor Seating Area Near the Library	More Outdoor Seating, Landscaping, Trees, Gardens, etc., Play Area	Multiple times each week	By Car, Parking in the Lot	More sidewalks/pathways/crossings—especially kid safe marked crossing in existing parking	Colorful Painted Asphalt, Bike parking and stroller parking only — no more car spots	Temporary/Mobile Stage and Seating, Pop-up Commercial Space (Small Business, Farmer's Market, etc.)	Sculpture or Furniture made from reused Patterson Playscape materials, Playful	Family Friendly, Inviting, Functional	Playground!!!!!!	No		19-25	Yes	mroeske@grossepointelibrary.org
Open Green Space, Library and Mail drop boxes, Outdoor Seating Area Near the Library	More Outdoor Seating, Event Space, Landscaping, Trees, Gardens, etc., Art	Weekly	By Car, Parking in the Lot	Pathways leading to the library and outdoor seating	Bioswales	Flexible Outdoor Gathering Space, Food Truck Pop-up Space	Place Specific Art	Inviting, Beautiful, Functional	Do whatever can be done to distract from the look of a parking lot	Yes	6-10 years	65+	Yes	margwoodford@icloud.com
Open Green Space, Library and Mail drop boxes, Outdoor Seating Area Near the Library, Bike Repair Station	Landscaping, Trees, Gardens, etc.	Weekly	On Foot	Keep the green space! Definitely don't want a parking lot there that would have water runoff overload the drains. We need as much green space and trees to purify the air and reduce the air pollution from cars on Jefferson and from the Sliant's plant.	Bioswales, Permeable Pavers	Built In Stage (Eastpointe City Hall)	Temporary/Rotating Installation	Natural, Accessible, Inviting, Beautiful	Native pollinator plants, not using pesticides and cancer causing fertilizers but natural products	Yes	11-20 years	41-65	No	
Open Green Space, Outdoor Seating Area Near the Library, Bike Repair Station	More Outdoor Seating, Landscaping, Trees, Gardens, etc.	Weekly	On Foot	More green space, not concrete parking lot	Bioswales, Permeable Pavers	Built In Stage (Eastpointe City Hall)	Temporary/Rotating Installation	Natural, Inviting, Beautiful	Use pollinator plants and don't use pesticides	Yes	11-20 years	65+	No	
Open Green Space, Library and Mail drop boxes, Outdoor Seating Area Near the Library, Bike Repair Station	Landscaping, Trees, Gardens, etc.	Multiple times each week	On Foot	More walkable through parking lot	Bioswales	Flexible Outdoor Gathering Space	Functional Art	Natural	No	Yes	20+ years	65+	Yes	weejee0402@att.net
Open Green Space	Landscaping, Trees, Gardens, etc.	Monthly	By Car, Parking in the Lot	Update pavement . It's terribly bumpy and dangerous	Bioswales	Flexible Outdoor Gathering Space	Temporary/Rotating Installation	Natural, Beautiful, Traditional	Do NOT APUT PARKING IN CURRENT green space ,put plants , fix current asphalt	Yes	20+ years	65+	Yes	ptbclinic@aol.com
Outdoor Seating Area Near the Library	More Outdoor Seating	Rarely	On Foot	More pedestrian-friendly sidewalks, steps curbs. Fix trip hazards particularly on driveways and parking lots.	Mixed Pavement and Vegetation	Food Truck Pop-up Space, Pop-up Commercial Space (Small Business, Farmer's Market, etc.)	Sculpture or Furniture made from reused Patterson Playscape materials, Playful	Accessible, Historic, Functional	Benches	Yes	6-10 years	65+	No	
Open Green Space, Library and Mail drop boxes, Outdoor Seating Area Near the Library, Green grassy open area	Landscaping, Trees, Gardens, etc., No parking lot	Multiple times each week	On Foot	It's easy right now. Parking area behind city hall needs resurfacing	No parking lot is appealing. Not necessary	Flexible Outdoor Gathering Space, Grassy area should remain	No ideas	Family Friendly, Natural, Accessible	Keep open grassy area as is. Very important for cleansing our air.	Yes	20+ years	65+	Yes	vesta.dajani@gmail.com
Open Green Space, Outdoor Seating Area Near the Library, Enhance landscaping with paths, benches, lighting and gardens	More Outdoor Seating, Landscaping, Trees, Gardens, etc., meandering pathways, benches/seating, a green space for all people to enjoy	Multiple times each week	By Car, Parking in the Lot	a better flow of traffic and use of existing space to create more parking spots	Bioswales	Flexible Outdoor Gathering Space	Functional Art	Natural, Inviting, Beautiful, Functional	An environmentally friendly space with native trees and landscaping to be enjoyed by all	No		65+		kmoy819@gmail.com
Open Green Space, Library and Mail drop boxes, Outdoor Seating Area Near the Library, Bike Repair Station	Landscaping, Trees, Gardens, etc., Improved Parking	Weekly	By Car, Parking in the Lot	Na	Mixed Pavement and Vegetation	Flexible Outdoor Gathering Space	Place Specific Art	Casual, Fresh, Beautiful	Na	Yes	6-10 years	41-65	No	
Open Green Space	Landscaping, Trees, Gardens, etc.	Monthly	On Foot	refreshed landscaping, flowers	Colorful Painted Asphalt	Flexible Outdoor Gathering Space	Temporary/Rotating Installation	Dynamic	no	Yes	11-20 years	41-65	No	
Open Green Space, The open field in front of the library should be a park.	Landscaping, Trees, Gardens, etc., Improved Parking, Less pavement and more green space to offset the diesel death fumes from the buses idling without purpose.	Multiple times each week	On Foot	Crossing through the area without fear of being mowed down by inattentive people looking for a parking space. Cross walk? Walking path striping? It's a frogger game out there.	Mixed Pavement and Vegetation, Permeable Pavers	Flexible Outdoor Gathering Space	Functional Art, Playful	Family Friendly, Accessible	Poorly designed survey that does not allow a non answer to this question.	Yes	20+ years	41-65		I will engage if this project does not make sense.
Open Green Space, Library and Mail drop boxes, Outdoor Seating Area Near the Library, Bike Repair Station, Seems like the Library funds most of the current Civic Campus	More Outdoor Seating, Landscaping, Trees, Gardens, etc., Play Area, Improved Parking	Multiple times each week	By Car, Parking in the Lot	Repair the parking lot	Mixed Pavement and Vegetation, Colorful Painted Asphalt	Flexible Outdoor Gathering Space and Seating, Food Truck Pop-up Space	Temporary/Rotating Installation, Functional Art, Playful	Family Friendly, Dynamic, Historic	no	Yes	11-20 years	26-40	No	

What is your favorite thing(s) about the Civic Campus now?	What would you be most excited to see included in a new Civic Campus?	How often do you go to the Civic Center?	How do you usually travel to the Civic Center?	What do you think could improve your experience moving around the Civic Center?	PARKING: The redesign of the Civic Center will need to include additional parking, but that doesn't have to mean an empty asphalt lot. Which of the following images do you find most appealing?	EVENTS: The Civic Center can support space for pop-ups and special events. Which of these images do you find most appealing?	ART: Public art could be integrated into the site design to serve as both decoration and functional use. Which of these images do you find most appealing?	What words describe how you'd like the new Civic Center to feel? (Select 3)	Is there anything else you'd like us to know about what you'd like to see included in the new Civic Center Campus?	Are you a current resident of Grosse Pointe Park?	How long have you lived in Grosse Pointe Park?	What is your age?	Would you be interested in engaging further on this project?	If you responded yes to the question above, please share your best email address.
Library and Mail drop boxes, Outdoor Seating Area Near the Library, Bike Repair Station	More Outdoor Seating, Landscaping, Trees, Gardens, etc., Play Area	Multiple times each week	By Car, Parking in the Lot	the parking is absolutely cluttered, but I do wish something fun could be done with the green space other than just more parking. A play area, landscaping for some park/outdoor seating...all would be lovely for the library.	Mixed Pavement and Vegetation, Bioswales	Flexible Outdoor Gathering Space, Food Truck Pop-up Space, Pop-up Commercial Space (Small Business, Farmer's Market, etc.)	Temporary/Rotating Installation, Playful	Family Friendly, Accessible, Dynamic, Inviting, Beautiful, Functional	Thank you for doing this, it's wonderful to feel all of our voices are being heard!	Yes	0-5 years	19-25	No	
Open Green Space	More Outdoor Seating, Landscaping, Trees, Gardens, etc.	Monthly	By Car, But I Don't Park in the Lot	Upgraded attractive seating Since we are within walking distance of the Civic Center, our access is on sidewalks. Plantings along sidewalks on CC grounds where practical and divisions of the green space if it is to remain so. We feel strongly that this green space is a welcoming sight as one drives east on Jefferson. Leaving the commercial section it is always a welcoming sight to see our CC buildings in a park-like setting with the small pocket parks across Jefferson and the beautiful library in a spacious setting. If we give this space over to parking we can never have it back. Protect and keep what we have	Colorful Painted Asphalt	Flexible Outdoor Gathering Space, Built In Stage (Eastpointe City Hall), Food Truck Pop-up Space	Place Specific Art	Fresh, Inviting, Beautiful	Please not a boring asphalt parking lot.	Yes	20+ years	65+	No	
Open Green Space, Outdoor Seating Area Near the Library	More Outdoor Seating, Landscaping, Trees, Gardens, etc., Play Area, Art	Weekly	On Foot		Mixed Pavement and Vegetation, Bioswales	we have a farmer' market on Kercheval as well as closing off sections of Kercheval for art festivals, etc. Do we need more of the same?	I think the challenge is to combine parked cars and play/relaxing and walkable areas.	Family Friendly, Natural, Accessible, Dynamic, Inviting, Beautiful	Sometimes less is more	Yes	20+ years	65+	Yes	domzal1@att.net
Open Green Space, Outdoor Seating Area Near the Library, Bike Repair Station	More Outdoor Seating, Landscaping, Trees, Gardens, etc., Play Area, Art	Multiple times each week	On Foot	Less cars	Bioswales	Flexible Outdoor Gathering Space, Pop-up Commercial Space (Small Business, Farmer's Market, etc.)	Place Specific Art	Family Friendly, Inviting, Beautiful	Less cars	Yes	20+ years	65+	Yes	Lingalante989@yahoo.com
Ease of access, both road and pedestrian	Landscaping, Trees, Gardens, etc., Improved Parking	Multiple times each week	By Car, Parking in the Lot	More, clearly free, and better parking. More shade trees and flowers	Mixed Pavement and Vegetation	Pop-up Commercial Space (Small Business, Farmer's Market, etc.)	Sculpture or Furniture made from reused Patterson Playscape materials, Functional Art	Natural, Inviting, Functional	Clear and more attractive signage	Yes	20+ years	41-65	No	
Open Green Space, Library and Mail drop boxes, Outdoor Seating Area Near the Library, Beautiful architecture surrounding green space	Event Space, Landscaping, Trees, Gardens, etc., An architectural feature in green space	Multiple times each week	On Foot	Green space becomes a town square	NO parking in green space as not needed	Town square with fountain, monument or structure like a gazebo	Gazebo with lights	Family Friendly, Inviting, Beautiful, Functional	Gazebo to include Park Christmas tree	Yes	20+ years	65+	Yes	mreimazur@gmail.com
Open Green Space, Library and Mail drop boxes	Landscaping, Trees, Gardens, etc., Play Area, Art, Resurfacing of an unchanged parking lot	Monthly	By Car, But I Don't Park in the Lot	Resurfaced parking lot but unchanged	Bioswales	Flexible Outdoor Gathering Space, Pop-up Commercial Space (Small Business, Farmer's Market, etc.)	Temporary/Rotating Installation, Place Specific Art, Functional Art, Playful	Natural, Beautiful, Traditional	Na	Yes	11-20 years	41-65	No	
Nothing	Landscaping, Trees, Gardens, etc., Improved Parking, Adequate and accessible parking	Multiple times each week	By Car, Parking in the Lot	Adding designated walking and bike paths.	Bioswales	Pop-up Commercial Space (Small Business, Farmer's Market, etc.)	Functional Art	Natural, Accessible, Functional	Not at this time.	Yes	11-20 years	41-65	Not at this time.	
Library and Mail drop boxes, Outdoor Seating Area Near the Library, Bike Repair Station	Landscaping, Trees, Gardens, etc., Improved Parking	Weekly	Depends on the weather. We either bike, walk or take the car.	Pathways	Colorful Painted Asphalt	Pop-up Commercial Space (Small Business, Farmer's Market, etc.)	Playful	Family Friendly	No	Yes	11-20 years	41-65	No	
Library and Mail drop boxes	Event Space, Landscaping, Trees, Gardens, etc., Improved Parking	Rarely	By Car, Parking in the Lot	Not sure	Bioswales, Permeable Pavers	Flexible Outdoor Gathering Space	Functional Art	Family Friendly, Casual, Inviting	Some type of destination point.	Yes	20+ years	65+	No	
Library and Mail drop boxes, Outdoor Seating Area Near the Library, Bike Repair Station	Improved Parking	Monthly	By Car, Parking in the Lot	Better lot design for parking	Mixed Pavement and Vegetation	Pop-up Commercial Space (Small Business, Farmer's Market, etc.)	Sculpture or Furniture made from reused Patterson Playscape materials	Accessible, Historic	Just make the new parking lot look appealing	Yes	20+ years	41-65	No	

What is your favorite thing(s) about the Civic Campus now?	What would you be most excited to see included in a new Civic Campus?	How often do you go to the Civic Center?	How do you usually travel to the Civic Center?	What do you think could improve your experience moving around the Civic Center?	PARKING: The redesign of the Civic Center will need to include additional parking, but that doesn't have to mean an empty asphalt lot! Which of the following images do you find most appealing?	EVENTS: The Civic Center can support space for pop-ups and special events. Which of these images do you find most appealing?	ART: Public art could be integrated into the site design to serve as both decoration and functional use. Which of these images do you find most appealing?	What words describe how you'd like the new Civic Center to feel? (Select 3)	Is there anything else you'd like us to know about what you'd like to see included in the new Civic Center Campus?	Are you a current resident of Grosse Pointe Park?	How long have you lived in Grosse Pointe Park?	What is your age?	Would you be interested in engaging further on this project?	If you responded yes to the question above, please share your best email address.
Outdoor Seating Area Near the Library, Pollinator gardens	Play Area. Safe and pleasant pedestrian and bicycle pathways from Maryland and Jefferson to the library and city offices.	Weekly	On Foot	A redesigned parking lot that includes a safe, level sidewalk path connecting Maryland to the library and municipal center. Connecting Jefferson to the library would also help. It's a really big space to have to go all the way around to Lakepointe - which by the way, also doesn't have a way to cross from one side to the other at the library with a stroller, bike, or wheelchair. No parent feels safe pushing their kid in a stroller through a parking lot as complicated (and bumpy) as that one. The sidewalk along the parking lot on the library side is also inhospitable to strollers coming from the Maryland side.	Bioswales, Permeable Pavers. Would be nice to have a welcoming, appealing feature along Jefferson, not just parking, expand upon the businesses already nearby. Welcome people getting on and off the buses there. Connect the bus stops to the library and garden.	Flexible Outdoor Gathering Space, Food Truck Pop-up Space, Pop-up Commercial Space (Small Business, Farmer's Market, etc.)	Sculpture or Furniture made from reused Patterson Playscape materials, Playful	Family Friendly, Natural, Accessible	If green space is maintained, trees that create real shade would be a real improvement. I love living in a city with great tree cover, but as the trees are aging and removed, they aren't replaced often enough. Shade in summer is so important for a comfortable, walkable experience in a city, and small trees don't make much shade. Improving safety and making navigating the civic center campus more pleasant for pedestrians, cyclists, and the disabled is the most important issue for me.	Yes	20+ years	26-40	Yes	marisa.gies@gmail.com
Library and Mail drop boxes, Outdoor Seating Area Near the Library	More Outdoor Seating, Event Space, Improved Parking	Rarely	By Car, Parking in the Lot	Not sure. The space is tight	Mixed Pavement and Vegetation, Bioswales	Temporary/Mobile Stage and Seating, Food Truck Pop-up Space, Pop-up Commercial Space (Small Business, Farmer's Market, etc.)	Functional Art, Playful	Family Friendly, Accessible, Functional	No	Yes	11-20 years	41-65	No	
Open Green Space	Landscaping, Trees, Gardens, etc.	Monthly	On Foot	Landscaping	Mixed Pavement and Vegetation	Food Truck Pop-up Space	Functional Art	Natural, Inviting	EV Chargers	Yes	6-10 years	41-65	Yes	psdykewicz@yahoo.com
Outdoor Seating Area Near the Library	The white windows painted the color of the cement trim.	Weekly	By Car, Parking in the Lot	The new windows painted as the old ones were.	Bioswales	Flexible Outdoor Gathering Space	Functional Art	Historic, Beautiful, Traditional	A sense that GPP is 100 years old and beautiful architecture doesn't need to be rehabbed with new colors of roof or windows that do not match the building. Make the windows look like part of the building, not some replacements that keep out the wind but look like Wallside came in and stuck them in the openings.....	Yes	20+ years	41-65	Yes	kahh8789@gmail.com
Open Green Space, Library and Mail drop boxes, Outdoor Seating Area Near the Library	Landscaping, Trees, Gardens, etc., Art	Weekly	On Foot	Beautiful landscaping, a fountain and an outdoor area for library storytelling.	We don't need more parking.	Flexible Outdoor Gathering Space, Pop-up Commercial Space (Small Business, Farmer's Market, etc.)	Functional Art	Natural, Inviting, Beautiful	Trees	Yes	20+ years	65+	Yes	mdseiden@hotmail.com
Open Green Space, Library and Mail drop boxes	Landscaping, Trees, Gardens, etc.	Monthly	On Foot	I love the green space but would like to see it really become a small park with trees and landscaping. It would be nice if the driveways to the library and city offices could be repaired.	Permeable pavers with vegetation if possible	Flexible Outdoor Gathering Space	Sculpture or Furniture made from reused Patterson Playscape materials, Functional Art	Accessible, Beautiful, Functional	I would like to see the space used as a multi-use space that would be flexible enough to have small art fairs, food trucks and/or casual gathering place to read or enjoy the beautiful but natural landscaping.	Yes	20+ years	65+	Yes	Maryfegan53@yahoo.com
Open Green Space, Outdoor Seating Area Near the Library	More Outdoor Seating, Landscaping, Trees, Gardens, etc., Play Area, Art	Weekly	On Foot	More trees, landscaping, outdoor seating. Making it into a park atmosphere would be nice- benches, picnic tables, etc	Bioswales	Flexible Outdoor Gathering Space	Playful	Family Friendly, Inviting, Beautiful	Please don't make it all just a giant parking lot. We are a walkable community.	Yes	6-10 years	41-65	No	
Open Green Space, Library and Mail drop boxes, Bike Repair Station	Landscaping, Trees, Gardens, etc., Play Area	Weekly	By Car, But I Don't Park in the Lot	Not having another parking lot. Would rather bike or walk. The drop boxes are convenient so I don't have to park	Bioswales, Smallest lot possible with green but not so much it forces a bigger lot. Overall I would say I have never struggled to park there. Don't need more spots. Keep a big space for kids to play football soccer or frisbee	Temporary/Mobile Stage and Seating, Food Truck Pop-up Space	Place Specific Art, Sculpture or Furniture made from reused Patterson Playscape materials, Functional Art	Family Friendly, Natural, Beautiful	Wide open space for kids to play sports or throw frisbees. Any parking lot should be small and designed to encourage walking or biking instead of driving. A natural habitat for birds & insects. NOT a slab of asphalt that will remain empty the majority of the time.	Yes	6-10 years	26-40	Yes	Dan.p.palmer@gmail.com
Open Green Space, Library and Mail drop boxes, Bike Repair Station	More Outdoor Seating, Landscaping, Trees, Gardens, etc.	Monthly	By Car, Parking in the Lot	Repave the roadway Plant a garden with walkways, seating and a water feature in the empty land. Do not add parking.	Mixed Pavement and Vegetation, Bioswales, Permeable Pavers	Flexible Outdoor Gathering Space	Sculpture or Furniture made from reused Patterson Playscape materials, Functional Art, Playful	Natural, Accessible, Beautiful		Yes	20+ years	41-65	Yes	christinekeener555@gmail.com
Open Green Space	Landscaping, Trees, Gardens, etc.	Rarely	By Car, But I Don't Park in the Lot		Bioswales	We have other areas in the city where this is done. Use those instead.	Functional Art	Natural, Inviting, Beautiful	No more parking	Yes	20+ years	41-65	No	
Open Green Space	Keep the green space! Event Space, Landscaping, Trees, Gardens, etc., Improved Parking, NO POTHLES	Weekly	By Car, Parking in the Lot	Nothing- fine as is	Bioswales, Permeable Pavers	Flexible Outdoor Gathering Space, Built In Stage (Eastpointe City Hall)	Temporary/Rotating Installation, Playful	Family Friendly, Natural, Beautiful	Green space	Yes	11-20 years	41-65	No	
Library and Mail drop boxes, Bike Repair Station	Landscaping, Trees, Gardens, etc., Improved Parking, NO POTHLES	Monthly	By Car, Parking in the Lot	NO POTHLES	Mixed Pavement and Vegetation	Pop-up Commercial Space (Small Business, Farmer's Market, etc.)	Functional Art	Beautiful, Functional, Traditional	An open house at Police/fire Dept.	Yes	20+ years	65+	Yes	kelden74@comcast.net

What is your favorite thing(s) about the Civic Campus now?	What would you be most excited to see included in a new Civic Campus?	How often do you go to the Civic Center?	How do you usually travel to the Civic Center?	What do you think could improve your experience moving around the Civic Center?	PARKING: The redesign of the Civic Center will need to include additional parking, but that doesn't have to mean an empty asphalt lot. Which of the following images do you find most appealing?	EVENTS: The Civic Center can support space for pop-ups and special events. Which of these images do you find most appealing?	ART: Public art could be integrated into the site design to serve as both decoration and functional use. Which of these images do you find most appealing?	What words describe how you'd like the new Civic Center to feel? (Select 3)	Is there anything else you'd like us to know about what you'd like to see included in the new Civic Center Campus?	Are you a current resident of Grosse Pointe Park?	How long have you lived in Grosse Pointe Park?	What is your age?	Would you be interested in engaging further on this project?	If you responded yes to the question above, please share your best email address.
Outdoor Seating Area Near the Library, Bike Repair Station	More Outdoor Seating, Landscaping, Trees, Gardens, etc., Improved Parking, Art	Weekly	On Foot	More gardening/trees would be great! This is a wide open space right next to a busy thoroughfare. I think more landscape design would provide a better buffer between the civic center and Jefferson, while beautifying it for employees, visitors, pedestrians, cyclists, people waiting for the bus or getting dropped off, etc.	Bioswales, Colorful Painted Asphalt	Flexible Outdoor Gathering Space, Pop-up Commercial Space (Small Business, Farmer's Market, etc.)	Temporary/Rotating Installation, Sculpture or Furniture made from reused Patterson Playscape materials, Functional Art	Accessible, Inviting, Beautiful, Functional	I walk there often while my two young children bike ride to visit the library and pay bills. Many other families do the same! Please ensure pedestrian safety in the design. I love the walkability of our community and just hope it remains a focus in new designs	Yes	6-10 years	26-40	Yes	kzlavere@gmail.com
Library and Mail drop boxes	Landscaping, Trees, Gardens, etc., Improved Parking	Rarely	By Car, Parking in the Lot	More parking and better use of greenspace.	Mixed Pavement and Vegetation, Colorful Painted Asphalt	Flexible Outdoor Gathering Space, Food Truck Pop-up Space	Sculpture or Furniture made from reused Patterson Playscape materials, Functional Art, Playful	Accessible, Fresh, Functional	Better functioning of the current parking lot.	Yes	20+ years	65+	No	
Library and Mail drop boxes, Outdoor Seating Area Near the Library	More Outdoor Seating, Landscaping, Trees, Gardens, etc., Play Area	Weekly	By Car, Parking in the Lot	Repaving the roadway around the area. Too many potholes (!) and the turnaround past the dropboxes is quite narrow and would be easier to use if that space was widened	Mixed Pavement and Vegetation	Flexible Outdoor Gathering Space	Functional Art	Natural, Inviting, Beautiful	I'm not convinced that more parking is needed since the existing lot is rarely full. I would prefer creating a more inviting greenspace where you could read a book in a lovely setting or sit and talk with a friend. Having a coffee cart/small food stand would be a benefit and might encourage visitors to come and spend time.	Yes	20+ years	65+	No	
Open Green Space	Landscaping, Trees, Gardens, etc.	Monthly	On Foot	More parking	Bioswales	Temporary/Mobile Stage and Seating	Temporary/Rotating Installation, Functional Art	Historic, Beautiful, Functional	No	Yes	20+ years	65+	No	
Open Green Space	Landscaping, Trees, Gardens, etc.	Weekly	By Car, Parking in the Lot	Better landscaping and garden design	Permeable Pavers	Flexible Outdoor Gathering Space	Functional Art	Accessible, Beautiful, Functional	Fully integrated paths and seating	Yes	20+ years	41-65	No	
Open Green Space	Landscaping, Trees, Gardens, etc.	Weekly	By Car, Parking in the Lot	Re-pave the parking lot A better walking path from the library to Maryland on the side of the police/fire station away from Jefferson.	Bioswales	Flexible Outdoor Gathering Space	Place Specific Art	Natural, Inviting, Traditional	No	Yes	20+ years	41-65	No	
Open Green Space	Landscaping, Trees, Gardens, etc., Play Area, Art	Monthly	On Foot	create a pedestrian mall linking the building entries, eliminate auto traffic there.	Disagree that additional parking is required.	Pop-up Commercial Space (Small Business, Farmer's Market, etc.)	Playful	Family Friendly, Natural	Please do not fill that green space with a giant parking lot.	Yes	11-20 years	41-65	No	
unobstructed views to the architecture	Landscaping, Trees, Gardens, etc.	Weekly	On Foot	No ideas	Bioswales	Pop-up Commercial Space (Small Business, Farmer's Market, etc.)	Place Specific Art	Natural, Inviting, Beautiful	no	Yes	20+ years	65+	Yes	jackcallas@gmail.com
Library and Mail drop boxes	More Outdoor Seating	Monthly	By Car, Parking in the Lot	Safer, easier path for pedestrians coming from the northwest (through a parking lot) & northeast (around the "wrong" side of the library)	Bioswales	Food Truck Pop-up Space	Temporary/Rotating Installation	Family Friendly, Accessible, Inviting, Beautiful	Appreciate the request for feedback	Yes	11-20 years	41-65	No	
Open Green Space, Outdoor Seating Area Near the Library, Bike Repair Station	More Outdoor Seating, Landscaping, Trees, Gardens, etc.	Multiple times each week	On Foot	It being more of a hub for free relaxing activities.	Colorful Painted Asphalt, Permeable Pavers	Flexible Outdoor Gathering Space, Built In Stage (Eastpointe City Hall)	Sculpture or Furniture made from reused Patterson Playscape materials, Functional Art, Playful	Family Friendly, Natural, Accessible, Inviting	No	Yes	20+ years	41-65	Yes	jerrybocjir@gmail.com
Open Green Space, Outdoor Seating Area Near the Library, Bike Repair Station	More Outdoor Seating, Event Space, Landscaping, Trees, Gardens, etc.	Monthly	By Bike		Bioswales	Flexible Outdoor Gathering Space, Pop-up Commercial Space (Small Business, Farmer's Market, etc.)	Temporary/Rotating Installation, Functional Art	Family Friendly, Inviting, Functional	Good use if funds without putting us in greater debt	Yes	0-5 years	41-65	Yes	Swoods007@aol.com
Library and Mail drop boxes	Landscaping, Trees, Gardens, etc., Art, I NEVER have trouble finding a parking space—the parking situation is just fine. And who needs/wants outdoor seating? Everybody just comes to their respective building, does their business and goes home. Who wants to sit on a bench and eat their sandwich on Jefferson? Just source up the front of the Municipal Bldg., get some healthy, mature plantings and some colorful flowers on the front and leave it alone. A sophisticated, beautiful building that has some stule and class—not like all this new, brown brick stull that screams, "warehouse." Step it up and give the gateway to the Pointes some interest. Stop looking cheap e front	Monthly	By Car, Parking in the Lot	There is no problem!	Colorful Painted Asphalt	Food Truck Pop-up Space	Temporary/Rotating Installation, Playful	Family Friendly, Historic, Beautiful, Traditional	I'd like to see more of a police presence.	Yes	20+ years	65+	No	

What is your favorite thing(s) about the Civic Campus now?	What would you be most excited to see included in a new Civic Campus?	How often do you go to the Civic Center?	How do you usually travel to the Civic Center?	What do you think could improve your experience moving around the Civic Center?	PARKING: The redesign of the Civic Center will need to include additional parking, but that doesn't have to mean an empty asphalt lot! Which of the following images do you find most appealing?	EVENTS: The Civic Center can support space for pop-ups and special events. Which of these images do you find most appealing?	ART: Public art could be integrated into the site design to serve as both decoration and functional use. Which of these images do you find most appealing?	What words describe how you'd like the new Civic Center to feel? (Select 3)	Is there anything else you'd like us to know about what you'd like to see included in the new Civic Center Campus?	Are you a current resident of Grosse Pointe Park?	How long have you lived in Grosse Pointe Park?	What is your age?	Would you be interested in engaging further on this project?	If you responded yes to the question above, please share your best email address.
Open Green Space, Library and Mail drop boxes	Landscaping, Trees, Gardens, etc., Play Area, Improved Parking	Weekly	On Foot	Expand the parking area going into the library and the mailbox and city hall. It's very tight going around.	Mixed Pavement and Vegetation, Colorful Painted Asphalt	Flexible Outdoor Gathering Space, Pop-up Commercial Space (Small Business, Farmer's Market, etc.)	Playful	Family Friendly, Natural, Beautiful	Some green space	Yes	6-10 years	65+	No	
Open Green Space, Outdoor Seating Area Near the Library, NO PARKING LOT IN GREENSPACE TOO LOUD WITH BUS CUT OUT	Event Space, Landscaping, Trees, Gardens, etc., NO PARKING LOT!!! Simple, passive space, with historic charm	I LIVE DIRECTLY ACROSS MY PROPERTY VALUE WILL PLUMMET	NO PARKING LOT IN GREENSPACE	NOT A PARKING LOT IN THE GREENSPACE	No parking lot whatsoever	Flexible Outdoor Gathering Space, Temporary/Mobile Stage and Seating, FOLLOW HISTORIC LANDSCAPE	Dignified, gazebo	Family Friendly, Natural, Casual, Accessible, Historic, Beautiful, Traditional	Please, please consider the feelings of the residents who live in the condos. How would you like it if a hideous parking lot was put in across from your home. My bedroom window will be very close to the entryway. Totally unacceptable. This space needs to be representative of the natural beauty of the community as you enter GPP from Jefferson. We dont need a "Golden Asshole". There is too much noise on the corner already with the bus cut out. Not to mention light pollution from lighting the parking lot. For all of the neighbors who enjoy this space to play with their dog, or kick a soccer ball around, keep it classy. And no parking lot	Yes	20+ years	41-65	Yes	Imarmentrout@hotmail.com
Open Green Space, Library and Mail drop boxes, Outdoor Seating Area Near the Library, Bike Repair Station	Art	Monthly	By Car, Parking in the Lot	a Entrance and better Parking --	Bioswales, Colorful Painted Asphalt	Pop-up Commercial Space (Small Business, Farmer's Market, etc.)	Functional Art, Playful	Inviting, Beautiful, Functional	Inclusiveness	Yes	20+ years	65+	Yes	beacommer@gmail.com
Outdoor Seating Area Near the Library	Event Space, Landscaping, Trees, Gardens, etc., Play Area, Improved Parking	Multiple times each week	By Car, Parking in the Lot	Resurfaced parking lot, move use of trees and plantings, vacant grass lot is significantly underdeveloped. Would like to see a mixed use building onsite that incorporates an urban park to help preserve the character of the area.	Mixed Pavement and Vegetation	Flexible Outdoor Gathering Space, Built In Stage (Eastpointe City Hall)	Temporary/Rotating Installation, Place Specific Art	Natural, Dynamic, Inviting	Reserve space for some kind of mixed-use development. Don't cover the entire grass lot with a building, but don't make it solely a parking lot/greenspace or urban park either. There is significant opportunity for increase tax base while also creating an urban area to be proud of.	No		26-40	No	
Open Green Space	More Outdoor Seating, Event Space, Play Area	Weekly	On Foot	a place to hangout outside	Bioswales	Flexible Outdoor Gathering Space	Playful	Family Friendly, Natural, Fresh	n/a	Yes	0-5 years	26-40	Yes	seaderthold@gmail.com
Outdoor Seating Area Near the Library	More Outdoor Seating, Event Space, Landscaping, Trees, Gardens, etc., Art	Multiple times each week	Equal amounts - car and walking	Landscaping.	Bioswales	Flexible Outdoor Gathering Space	Sculpture or Furniture made from reused Patterson Playscape materials, Functional Art	Natural, Inviting	Some outdoor seating with beautiful, interesting landscaping. I love our lakefront parks, but we have so few open green spaces in the Pointes to casually sit and enjoy a quick coffee break or lunch without driving.	Yes	20+ years	65+	No	
Open Green Space	Event Space	Weekly	By Car, Parking in the Lot	Beautification! Continued touches to the green space.	Mixed Pavement and Vegetation	Flexible Outdoor Gathering Space	Functional Art	Family Friendly, Natural, Beautiful	Fresh and inviting, usable, flexible space.	No		41-65	No	
Outdoor Seating Area Near the Library	Landscaping, Trees, Gardens, etc.	Rarely	By Car, Parking in the Lot	Nothing	Mixed Pavement and Vegetation	Flexible Outdoor Gathering Space	Functional Art	Family Friendly	No	Yes	20+ years	65+	Yes	tk_larry@sbcglobal.net
Outdoor Seating Area Near the Library, Bike Repair Station	More Outdoor Seating, Landscaping, Trees, Gardens, etc., Outdoor activity like basketball court / workout space/skate space	Rarely	By Car, Parking in the Lot	More inviting entrance with an activity space and beautiful landscape with walkthrough.	Mixed Pavement and Vegetation, Colorful Painted Asphalt	Flexible Outdoor Gathering Space, Temporary/Mobile Stage and Seating, Food Truck Pop-up Space, Pop-up Commercial Space (Small Business, Farmer's Market, etc.)	Temporary/Rotating Installation, Sculpture or Furniture made from reused Patterson Playscape materials, Playful	Family Friendly, Inviting, Functional	Newly designed beautiful, functional, inviting space that promote togetherness!	Yes	0-5 years	26-40	Yes	c.hutchinson11@yahoo.com
Library and Mail drop boxes	Landscaping, Trees, Gardens, etc., Play Area, Safe routes to enter the campus by walking or biking	Weekly	On Foot	The sidewalk is missing or broken in places; the parking lot itself is in bad condition; and the open space is uninviting and not landscaped. I would like to see intentional paths for walkers and bicyclists, as well as a park-like space featuring a play area	Bioswales, Colorful Painted Asphalt, Permeable Pavers	Flexible Outdoor Gathering Space, Temporary/Mobile Stage and Seating	Playful	Family Friendly, Natural, Accessible	The current plans are to turn the Civic Center Campus into an even larger parking lot. I find this entirely uninspiring. It should instead be an inviting public space -- something that Grosse Pointe Park currently lacks because the existing two parks are members-only.	Yes	0-5 years	26-40	Yes	heyitscooper@gmail.com



DOWNTOWN DEVELOPMENT AUTHORITY MEETING

DATE: December 12, 2023

SUBJECT: Facade Improvement Program

SUMMARY: One of the many opportunities with a Downtown Development Authority is the ability to administer grant programs for the district. The DDA distributed grants during the COVID-19 pandemic as well as business improvement grants thereafter. The DDA is looking to continue with a facade improvement grant program or FIG for short for the remaining portion of the 23-24 Fiscal Year.

The goal of the Facade Improvement Program is to provide financial assistance to local businesses to meet economic and beautification goals throughout the DDA District and. Only businesses located within the DDA District are eligible for the program. Applications will be accepted until April 1st, 2024 with funds being awarded on a first come, first serve basis. Eligible projects may include but not limited to lighting, painting and other building beautification, outside architectural enhancements including increased accessibility and signage.

Applicants must review code compliance and check with the building department prior to start of the project with a maximum of \$2,500. The DDA would budget \$10,000 for the entire program.

FINANCIAL IMPACT: \$10,000 budget available with \$2,500 being available to each applicant.

RECOMMENDATION: Motion to Approve the Facade Improvement Program of the DDA

PREPARED BY: Nick Sizeland, City Manager



**DOWNTOWN DEVELOPMENT AUTHORITY
FACADE IMPROVEMENT GRANT (FIG) PROGRAM**

SUMMARY

The City of Grosse Pointe Park's Downton Development Authority (DDA) is pleased to announce the launch of the DDA Facade Improvement Program (FIG).

The goal of the Facade Improvement Program is to provide financial assistance to local businesses to meet economic and beautification goals throughout the DDA District and. Only businesses located within the DDA District are eligible for the program.

The program will provide funding for Site Enhancement Projects to businesses who would like to complete the following:

- Facade improvements
- Business Signage improvements
- Other architectural upgrades to enhance exterior of building

\$10,000 will be available for FY2023-2024 and the maximum grant award amount available per business is \$2,500 with the funds provided to the applicant once the project is complete. Extra funds may be available dependent upon number of applications received.

Applications will be accepted until April 1st, 2024 with funds being awarded on a first come, first serve basis. Businesses who are interested in applying are encouraged to apply early. All proposed projects will need to be reviewed and approved by the City Building Department (building@grossepointepark.org) and meet applicable permit requirements.

If you have questions regarding the DDA FIG Program, please contact the DDA Director at sizelandn@grossepointepark.org or by calling (313)-822-6200.

PROJECT REQUIREMENTS

Grants are intended to improve the appearance of individual businesses, which helps to provide an improved image for the DDA District as a whole.

Guidelines:

1. All businesses located within the DDA District are eligible to apply. Businesses must be in good standing with the City including having a current and business license, certificate of occupancy, and any additional permit requirements including outdoor dining permits. Businesses who do not meet these requirements or have outstanding code violations, delinquent water bills, or delinquent tax bills will not be eligible to apply. Previous performance through the Business Improvement Grant program will also be considered.
2. Proposed site improvements must meet all current City Building codes and requirements.
3. All applicants are required to review and secure preliminary approval of their proposed projects with the Building Department. It is the sole responsibility of the applicant to obtaining all building and other required permits before any project work commences. Failure to do so will result in award being reconsidered.
4. Eligible improvements include, but are not limited to:
 - a. Outside Architectural Enhancements including increased accessibility
 - b. Lighting
 - c. Building Beautification including paint
 - d. Signage
5. A business must provide copies of all paid invoices, including copies of canceled checks or other evidence of payment, as well as secure final Building Department approval (if applicable), to receive grand funding at the completion of the project.
6. Grants are available to the building owner or tenant (if tenant applies, a current lease must be in place and the building owner must provide written permission approving the changes being proposed).

8. All businesses must receive grant approval by the DDA Director. Grant funding cannot be used to reimburse already completed projects.
9. Site improvement work must be completed within four months of approval, or an extension may be requested and approved by the Director in writing. Extension approvals are not guaranteed.
10. Projects selected for grant/ funding may be featured in City and DDA promotional materials to highlight the improvements.

REVIEW PROCESS

All applications submitted will go through an administrative review process first to ensure that the applicant meets all program requirements.

After the review process is completed, a funding recommendation including an award letter and funding agreement, will be provided to the applicant for final review and approval. The applicant will be notified once an award decision has been made.



2023-2024 DDA Façade Improvement Program Grant Application

Business Name:	Phone:
Contact Person:	Title:
E-Mail:	Website:
Mailing Address:	Physical Address:
Business Owner:	Property Owner:
Grant Request Amount:	Total Project Cost:

Applicants must attach a detailed project narrative. The project narrative should specifically describe how the proposed project will provide significant visual improvement over current conditions as seen from public ways. Applicants should also include relevant information such as project budgets, construction proposals and bids, photographs, site plans/ sketches, and project schedules.

All applicants are required to review and secure preliminary approval of their proposed projects with the Building Department prior to application submission to gain a full understanding of any building codes that may be relevant to a particular project.

Applicant's Signature

Date

Building Owner's Signature (if different from applicant)

Date

Application packets should be emailed to sizelandn@grossepointepark.org or returned via City drop box



DOWNTOWN DEVELOPMENT AUTHORITY MEETING

DATE: December 12, 2023

SUBJECT: 2024 Meeting Dates

SUMMARY: Presented for review are the following proposed dates for adoption of the 2024 calendar year. The Board is welcome to make amendments to the proposed schedule. Typically the meetings have been conducted on Tuesdays.

All meeting times are proposed to begin at 7:00 PM.

Tuesday, February 13, 2024

Tuesday, May 14, 2024 - informational meeting

Tuesday, August 13, 2024

Tuesday, December 10, 2024 - informational meeting

FINANCIAL IMPACT: Not Applicable

RECOMMENDATION: Motion to adopt the meeting schedule for 2024 as presented

PREPARED BY: Nick Sizeland, City Manager